



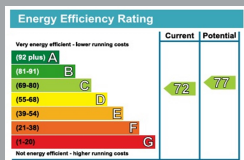
FLAT 21 SANDERLING
BOURNEMOUTH
Dorset, BH5 1AB

£1,100 PCM

[goadsby.com](https://www.goadsby.com)

TWO BEDROOM FIRST FLOOR FLAT WITH PRIVATE ENTRANCE AND BALCONY

- Delightful Two Bedroom Flat
- Redecorated Throughout
- Balcony & Parking
- Close to Beaches
- EPC Rating: Band C



Reference: 690385

Deposit amount: £1,269.00

Council Tax Band: C

Furnishing: Part-furnished or Unfurnished

Heating Type: Gas

Parking: One allocated space

Utilities:

- Mains Supply Electricity
- Mains Supply Gas
- Mains Supply Water

Drainage: Mains Supply Drainage

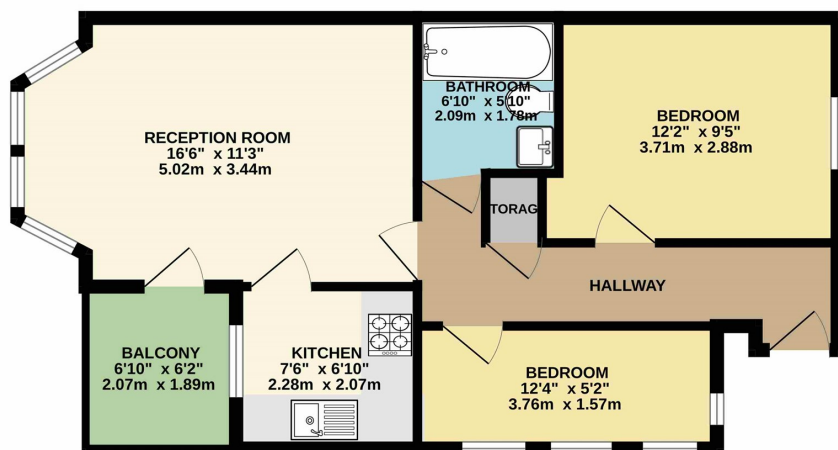
Broadband: Refer to Ofcom website
www.ofcom.org.uk/phones-and-broadband

Mobile Signal: Refer to Ofcom website
www.ofcom.org.uk/phones-and-broadband

Flood Risk: For more information refer to
gov.uk, check long term flood risk
www.gov.uk/check-long-term-flood-risk

Two bedroom apartment located in Boscombe Spa, close to award winning beaches, offered part-furnished or unfurnished and recently decorated. Property also benefits from a large living room, separate kitchen with white goods, gated parking, balcony and a private entrance. Second bedroom is a single.

FIRST FLOOR



PLEASE NOTE:

Measurements quoted are approximate and for guidance only. Fixtures, fittings, services & appliances have not been tested and therefore no guarantee can be given that they are in working order. Images have been produced for information and it cannot be inferred that any item shown is included with the property. These particulars are believed to be correct but their accuracy is not guaranteed and they do not constitute an offer or form part of a contract. Solicitors are specifically requested to verify the sales particulars details in the pre-contract enquiries, in particular: price, local and other searches.

Goadsby & Harding (Residential) Ltd
Registered Office: 99 Holdenhurst Road, Bournemouth, Dorset BH8 8DY Registered in England No. 1871280

01202 432188
southbourne@goadsby.com

31 Southbourne Grove

Southbourne
Bournemouth, Dorset
BH6 3QT