

# £155,000

## High Street, Redcar, TS10



- High Street Premises
- High Footfall Trading Area
- Sold With Vacant Possession
- Large Ground Floor Commercial Retail Space
- Prime Location
- Renovation Required
- Investment Opportunity
- Viewings Strictly Via The Agent
- Commercial EPC Rated: D

### High Street Investment Opportunity – Redcar

An excellent opportunity to acquire a prominently located commercial property in the heart of Redcar's bustling High Street.

Key Features:

**Ground Floor:**

Well-maintained and generously proportioned commercial unit in a high footfall area, ideal for retail or service-based operations.

**First Floor:**

Currently used as office/storage space. Requires renovation. Potential for conversion to residential use (subject to planning consent – please consult Redcar & Cleveland Council Planning Department).

**Location:**

Prime town centre position with excellent visibility and pedestrian traffic.

**Tenure:**

Freehold

**Status:**

Current tenant vacating.

**\*\*Floorplan Available\*\***

**Viewing:**

Strictly by appointment with the agent.

# High Street, Redcar, TS10

## Ground Floor Commercial Retail Space

15'8" x 92'10" (4.78m x 28.30m)

## Hallway

8'4" x 28'5" (2.54m x 8.66m)

## First Floor Hallway

## Room 1

18'3" x 14'0" (5.56m x 4.27m)

## Room 2

11'8" x 6'10" (3.56m x 2.08m)

## Room 3

11'8" x 5'3" (3.56m x 1.60m)

## WC

5'11" x 4'11" (1.80m x 1.50m)

## Room 4

9'8" x 10'8" (2.95m x 3.25m)

## Room 5

9'8" x 12'1" (2.95m x 3.68m)

## Second Floor Hallway

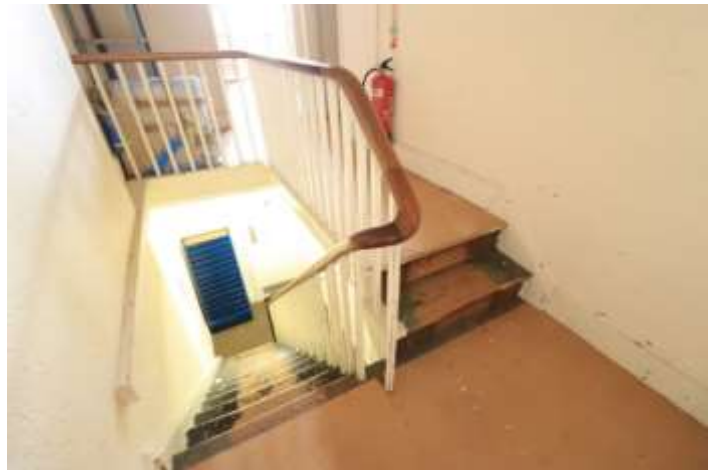
## Room 6

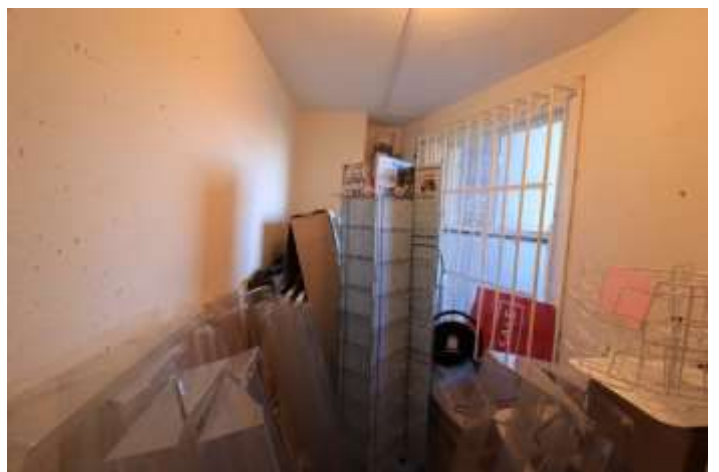
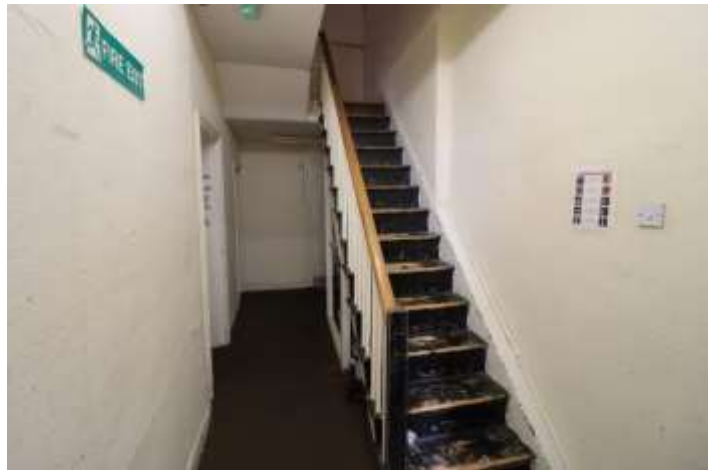
19'2" x 15'6" (5.84m x 4.72m)

## Room 7

19'2" x 15'6" (5.84m x 4.72m)











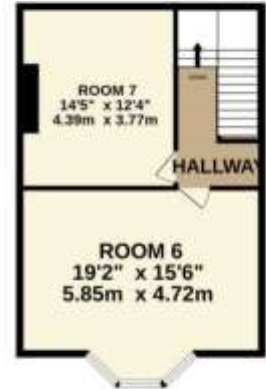
GROUND FLOOR  
1494 sq.ft. (138.0 sq.m.) approx.



1ST FLOOR  
798 sq.ft. (73.9 sq.m.) approx.



2ND FLOOR  
536 sq.ft. (49.5 sq.m.) approx.

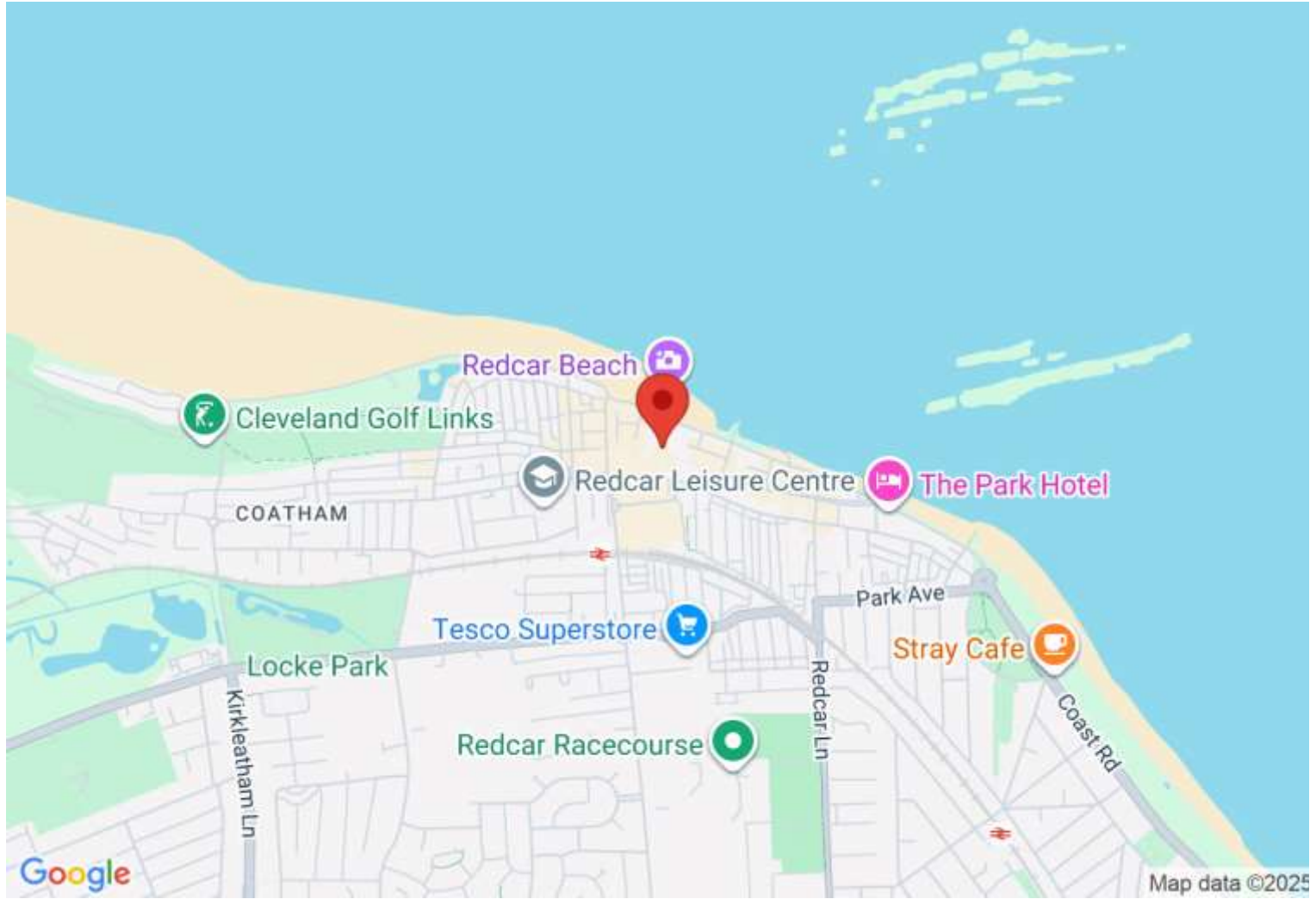


TOTAL FLOOR AREA : 2778 sq.ft. (257.9 sq.m.) approx.

While every attempt has been made to ensure the accuracy of the floorplan contained here, measurements of doors, windows, rooms and any other items are approximate and no responsibility is taken for any error, omission or mis-statement. This plan is for illustrative purposes only and should be used as such by any prospective purchaser. The services, systems and appliances shown have not been tested and no guarantee as to their operability or efficiency can be given.  
Made with Metropix (2025).

**Directions**

**Location**



**VIEWING BY APPOINTMENT WITH AGENTS REDCAR LETTINGS & SALES COMPANY LTD**

Exchange Buildings, 17-19 Cleveland Street, Redcar, TS10 1AR T: 01642 483430 E: [info@redcarletting.co.uk](mailto:info@redcarletting.co.uk) W: [redcarlettingandsales.co.uk](http://redcarlettingandsales.co.uk)

General: While we endeavour to make our sales particulars fair, accurate and reliable, they are only a general guide to the property and, accordingly, if there is any point which is of particular importance to you, please contact the office and we will be pleased to check the position for you, especially if you are contemplating travelling some distance to view the property.

Measurements: These approximate room sizes are only intended as general guidance. You must verify the dimensions carefully before ordering carpets or any built-in furniture.

Services: Please note we have not tested the services or any of the equipment or appliances in this property, accordingly we strongly advise prospective buyers to commission their own survey or service reports before finalizing their offer to purchase.

THESE PARTICULARS ARE ISSUED IN GOOD FAITH BUT DO NOT CONSTITUTE REPRESENTATIONS OF FACT OR FORM PART OF ANY OFFER OR CONTRACT. THE MATTERS REFERRED TO IN THESE PARTICULARS SHOULD BE INDEPENDENTLY VERIFIED BY PROSPECTIVE BUYERS OR TENANTS. NEITHER REDCAR LETTINGS & SALES COMPANY LTD NOR ANY OF ITS EMPLOYEES OR AGENTS HAS ANY AUTHORITY TO MAKE OR GIVE ANY REPRESENTATION OR WARRANTY WHATEVER IN RELATION TO THIS PROPERTY.

YOUR HOME IS AT RISK IF YOU DO NOT KEEP UP REPAYMENTS ON A MORTGAGE OR OTHER LOAN SECURED ON IT.

Written quotations available on request. All loans secured on property. Life assurance is usually required.