

BRANOC'S
ESTATES



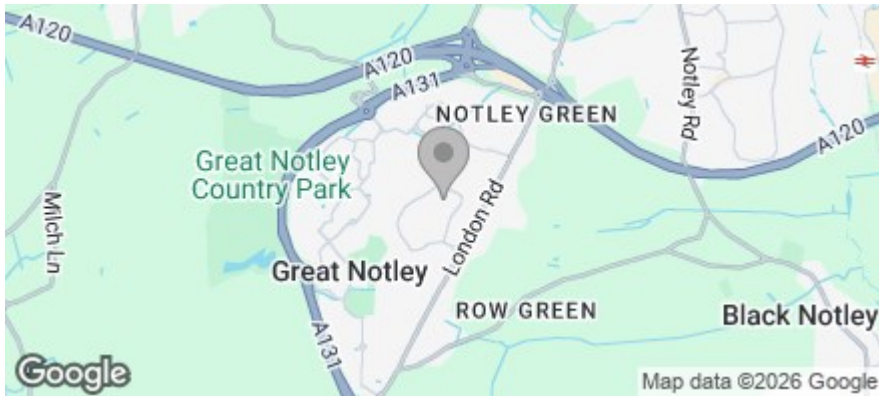
26 GILPIN WAY, BRAINTREE CM77

GUIDE PRICE £425,000

4 Bedrooms | 1 Bathrooms | 2 Receptions

Floor Plan

Area Map



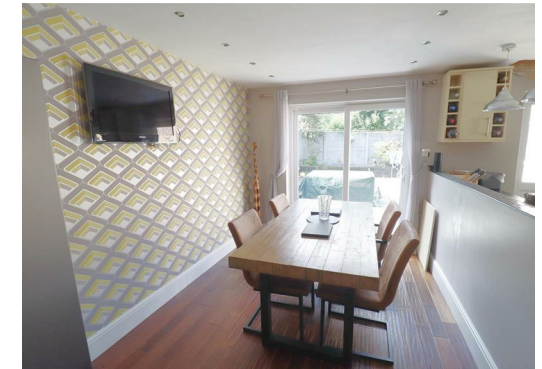
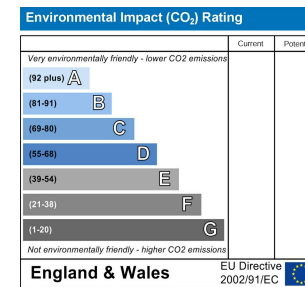
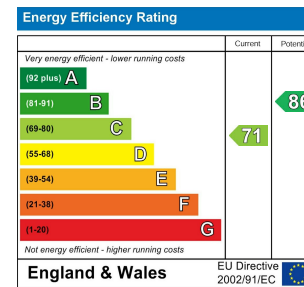
Accommodation

- FOUR BEDROOMS
- FRONT & REAR GARDEN
- GARAGE & DRIVEWAY
- NO ONWARD CHAIN
- KITCHEN/DINER
- DOUBLE GLAZED WINDOWS
- GAS CENTRAL HEATING
- EASY ACCESS TO A120

Viewing

Please contact us on 01376 386555 if you wish to arrange a viewing appointment for this property, or require further information.

Energy Efficiency Graph



Phone: 01376 386555
Email: info@branocsestates.co.uk
Website: www.branocsestates.co.uk

Phoenix House 5 New Street
 Braintree
 Essex
 CM7 1ER

Branocs endeavour to maintain accurate depictions of properties in Virtual Tours, Floor Plans and descriptions, however, these are intended only as a guide and purchasers must satisfy themselves by personal inspection.

