

[www.knights.uk.com](http://www.knights.uk.com)

CARDIFF

VALE

CAERPHILLY

BRISTOL



*Pontypriidd Road*

WEST END





Comments by Miss Georgia Farr



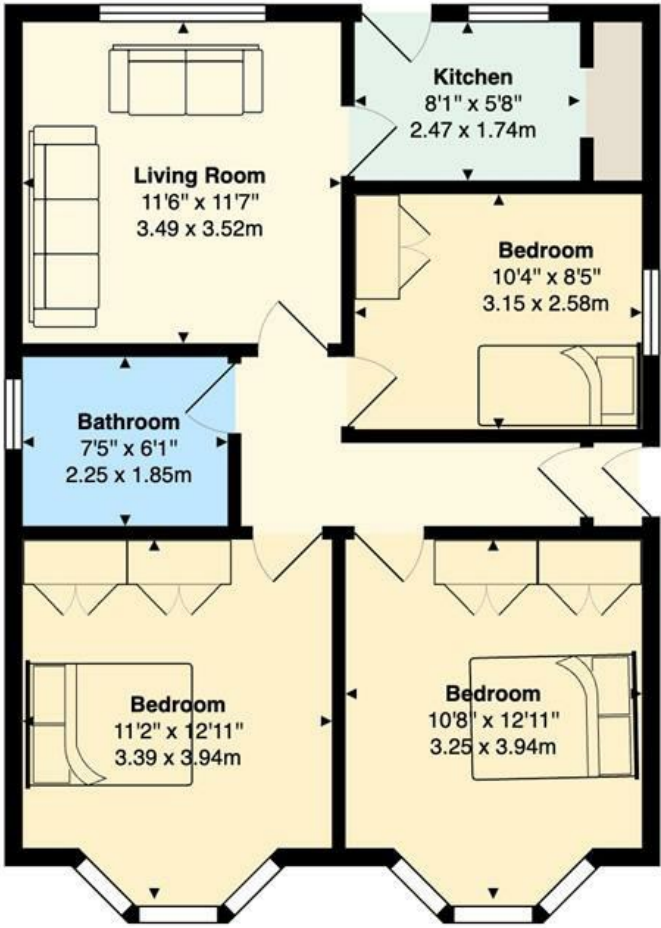
**Property Specialist**  
**Miss Georgia Farr**  
Sales Negotiator

georgia@knights.uk.com

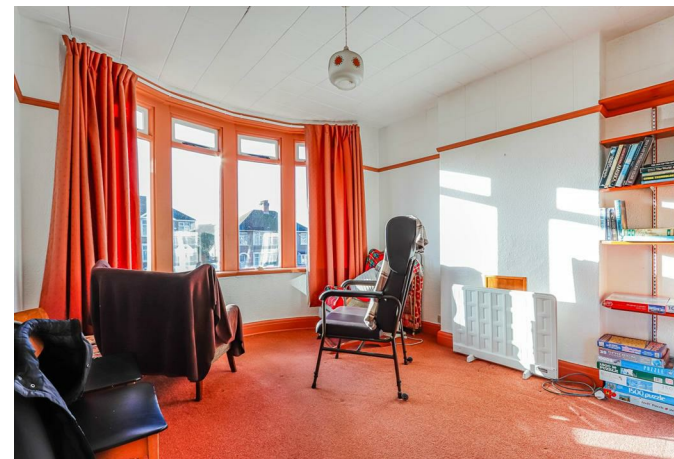


Comments by the Homeowner

Pontypridd Road, Barry, CF62 7LS



Total Area: 683 ft² ... 63.4 m²  
All measurements are approximate and for display purposes only



# Pontypridd Road

*West End, Barry, CF62 7LS*

Offers Over

**£250,000**



3 Bedroom(s)



1 Bathroom(s)



731.95 sq ft



Contact our  
***Knights Barry Branch***

01446 700222

Positioned on the charming Pontypridd Road in Barry, this delightful detached bungalow offers a perfect blend of comfort and convenience. Spanning an inviting 732 square feet, the property features a well-proportioned reception room, ideal for both relaxation and entertaining guests.

With three spacious bedrooms, this home is perfect for families or those seeking extra space for guests or a home office. The layout is thoughtfully designed to maximise natural light, creating a warm and welcoming atmosphere throughout.

The bungalow also includes a well-appointed bathroom, ensuring that all your daily needs are met with ease. The property's detached nature provides a sense of privacy, while the surrounding area boasts a friendly community vibe, making it an ideal place to settle down.

Barry is known for its beautiful coastline and vibrant local amenities, offering a range of shops, restaurants, and recreational activities. This bungalow presents an excellent opportunity for those looking to enjoy a peaceful lifestyle while remaining close to the conveniences of town living.

Whether you are a first-time buyer, a growing family, or someone looking to downsize, this property is sure to meet your needs. Don't miss the chance to make this charming bungalow your new home.





PORCH 2'11" x 3'01" (0.89m x 0.94m )

HALLWAY 2'11" (0.89m)

BEDROOM ONE 11'01" x 11'05" / 13'07"  
(3.38m x 3.48m / 4.14m )

BEDROOM TWO 11'01" x 11'06" / 13'07"  
(3.38m x 3.51m / 4.14m)

BATHROOM 6'05" x 7'03" (1.96m x 2.21m )

BEDROOM THREE 8'10" x 10'05" (2.69m x 3.18m)

LIVING ROOM 11'09" x 11'11" (3.58m x 3.63m)

KITCHEN 6'02" x 7'10" (1.88m x 2.39m )

STORAGE 2'01" x 6'02" (0.64m x 1.88m )

C A R D I F F

V A L E

C A E R P H I L L Y

B R I S T O L







Energy Efficiency Rating		
	Current	Potential
Very energy efficient - lower running costs		
(92 plus) <b>A</b>		<b>85</b>
(81-91) <b>B</b>		
(69-80) <b>C</b>		
(55-68) <b>D</b>		
(39-54) <b>E</b>		
(21-38) <b>F</b>		
(1-20) <b>G</b>		
Not energy efficient - higher running costs		
England & Wales		EU Directive 2002/91/EC