



Marylebone Road, NW1

£1,400,000

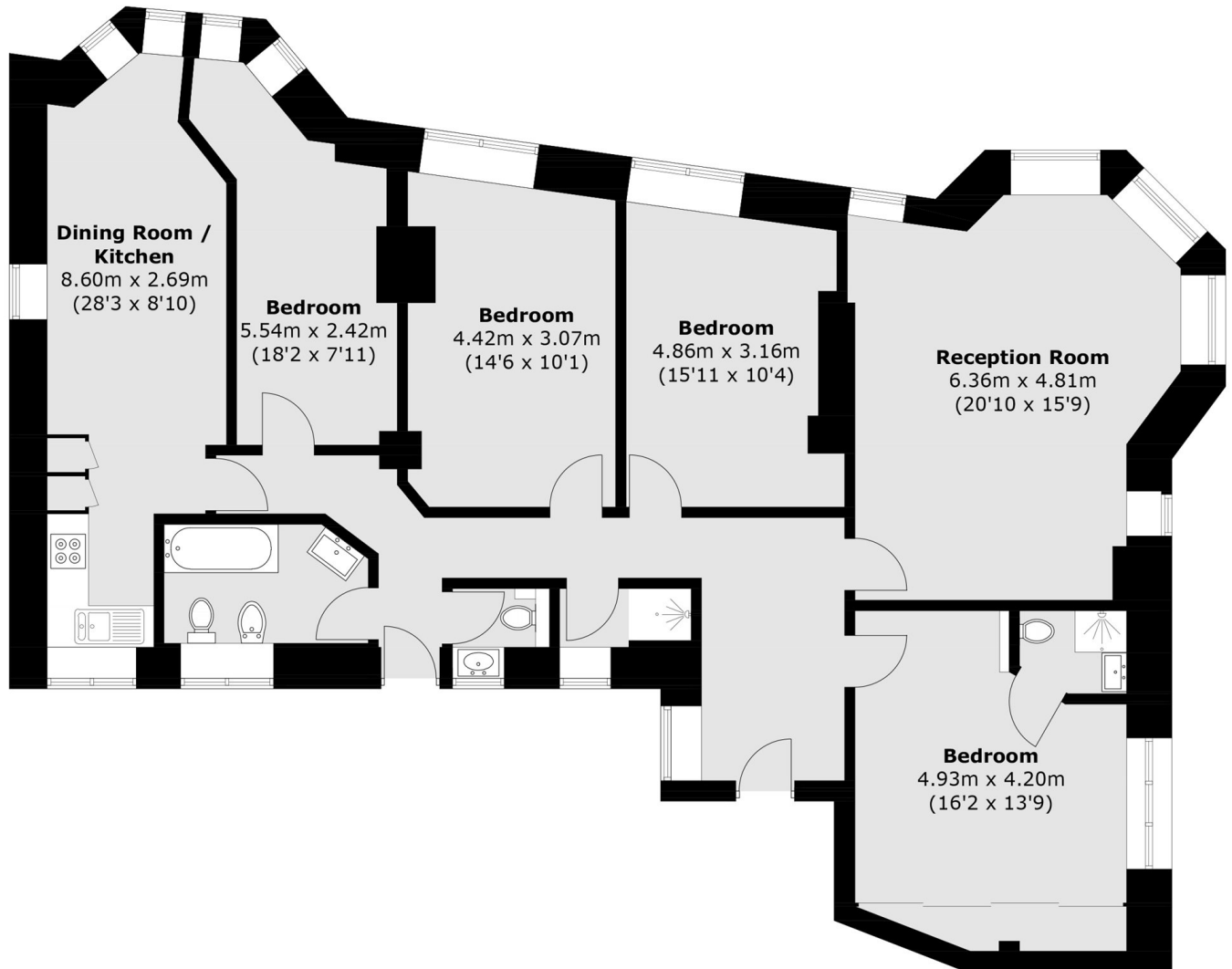
A four bedroom apartment in a Grade II listed 1907 built apartment block in the Arts and Crafts style. Located behind secure gates with a 999 Year Lease.

Located west of Regents Park moments from Marylebone, Baker Street and Edgware Road Stations. The waterside amenities of Paddington Basin are a few minutes away.

Features

- Four Bedrooms
- Two Bathrooms
- Reception Room
- Kitchen - Dining Room
- Triple Glazed
- Long Lease and Lift

Marylebone Road, London, NW1



Total area (approx.): 131.3 sq. m (1,413.3 sq. ft)