



Tadema Road, SW10

£1,895,000

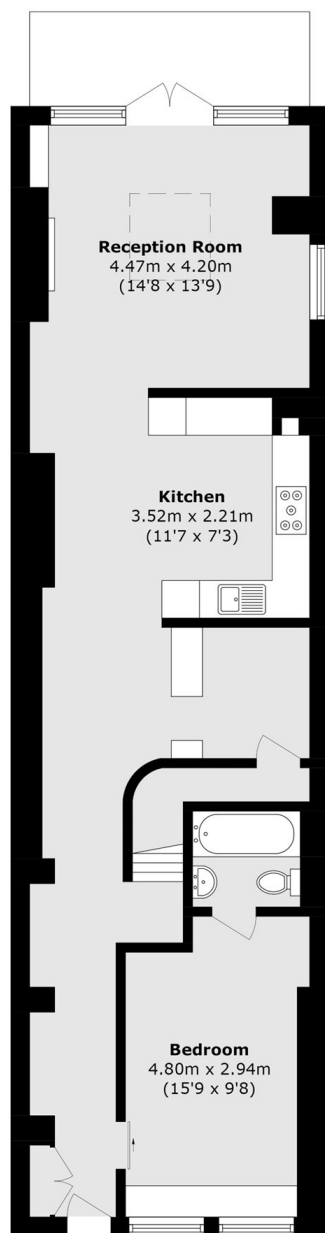
A wonderfully unique house spread over two floors with outstanding entertaining space and vaulted ceilings. Measuring close to 1400sqft, this property has two terraces, two double bedrooms and is in great condition throughout.

Tadema Road is ideally located a short distance from the King's Road along with all the amenities it has to offer. Lots Village is in the process of a redevelopment scheme which will include a host of new restaurants, shops and landscaped gardens.

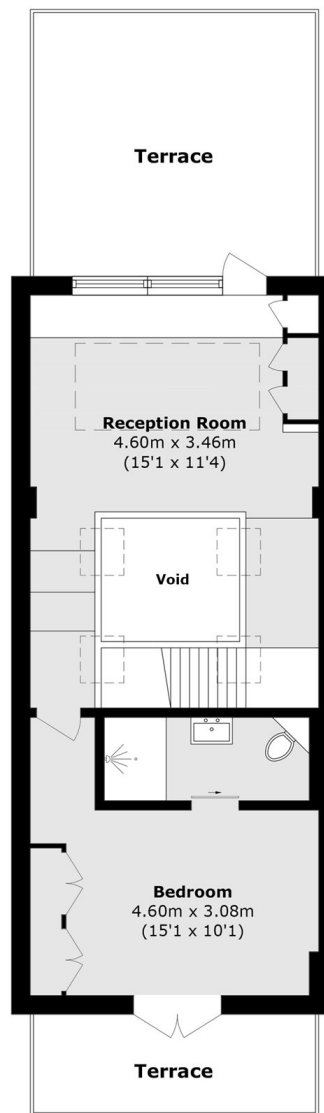
Features

- Two Terraces
- Freehold
- Two Bedrooms
- Vaulted Ceilings
- Quiet Location
- Large Entertaining Spaces

Tadema Road, London, SW10



Ground Floor



First Floor

Total area (approx.): 124.9 sq. m (1391.7 sq. ft)
(Excluding Void)

Dexters

Chelsea and Belgravia
45 Sloane Avenue
London
SW3 3DH
Sales
020 7590 9510

Energy Rating: . We aim to make our particulars both accurate and reliable. However they are not guaranteed; nor do they form part of an offer or contract. If you require clarification on any points then please contact us, especially if you're traveling some distance to view. Please note that appliances and heating systems have not been tested and therefore no warranties can be given as to their good working order.



dexters.co.uk