



Fulham Road, SW6

£520,000

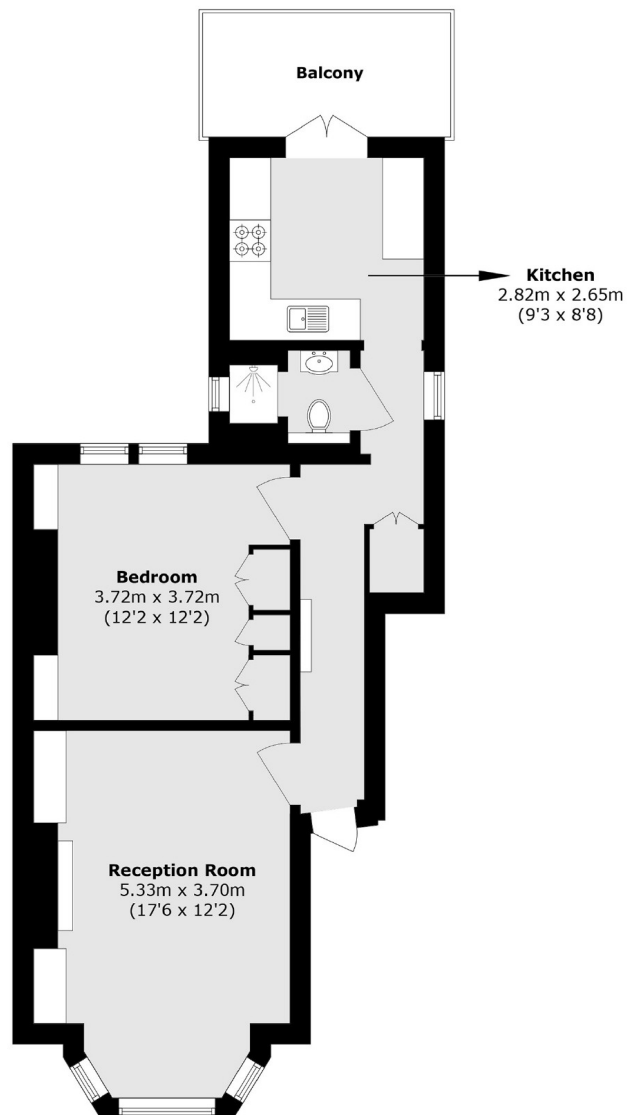
A bright and spacious one double bedroom flat set on the raised ground floor of an imposing and attractive Victorian building. This charming property boasts a generous front reception room featuring high ceilings, an original fireplace, ornate cornicing, and a large bay window that floods the space with natural light. The fully integrated kitchen opens directly onto a private roof terrace.

Set back from the Fulham Road, the property is conveniently located within walking distance of all the boutique shops, bars and restaurants in Parsons Green. The green itself is close by along with the other green spaces at Bishops Park and Eel Brook Common.

Features

- One Double Bedroom
- Original Period Features
- Private Roof Terrace
- Share Of Freehold
- No Chain
- Spacious Living Room

Fulham Road, London, SW6



Total area (approx.): 52.1 sq. m (560.8 sq. ft)

Balcony area (approx.): 6.3 sq. m (67.8 sq. ft)

Dexters

Parsons Green
656 Fulham Road
London
SW6 5RX

Sales
020 7731 5115

Energy Rating: C. We aim to make our particulars both accurate and reliable. However they are not guaranteed; nor do they form part of an offer or contract. If you require clarification on any points then please contact us, especially if you're traveling some distance to view. Please note that appliances and heating systems have not been tested and therefore no warranties can be given as to their good working order.

 **RICS** | Regulated
Estate Agent
and Letting Agent

[dexters.co.uk](https://www.dexters.co.uk)