



Flat 20, Southwood House Southwood Road, London, SE9 3QJ

Offers Over £150,000

- One Bedroom
- Larger Than Average
- Good Location
- Top Floor Flat
- Lots Of Potential
- EPC Rating C

Flat 20, Southwood House Southwood Road, London SE9 3QJ

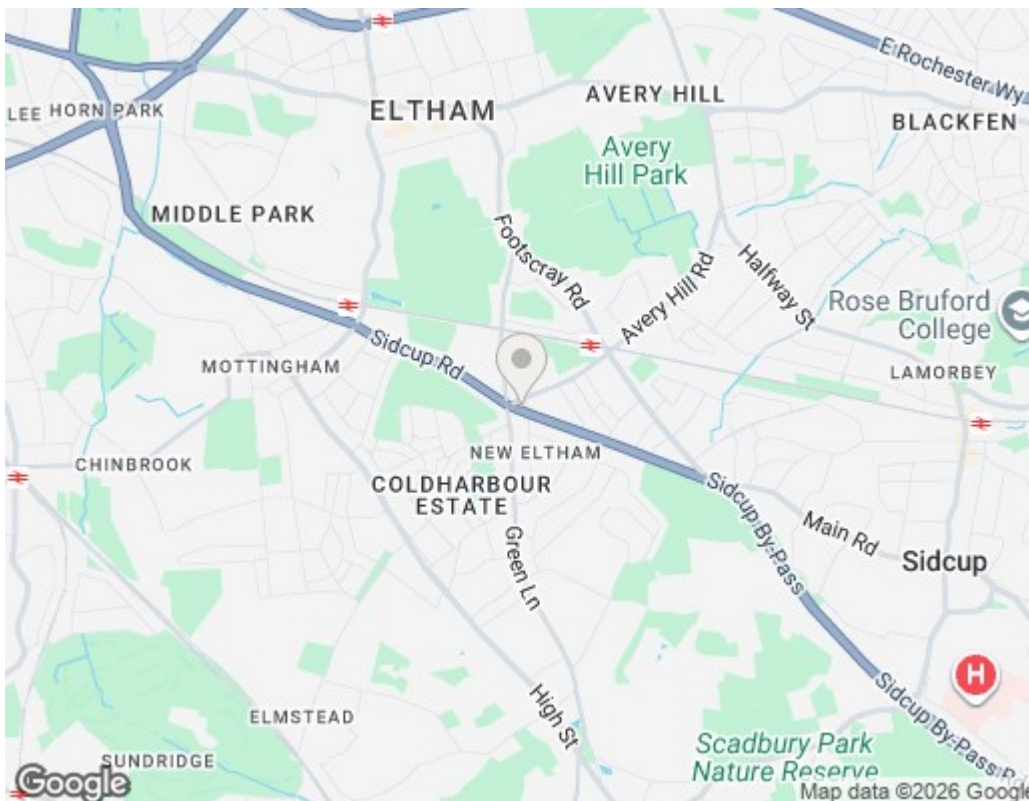
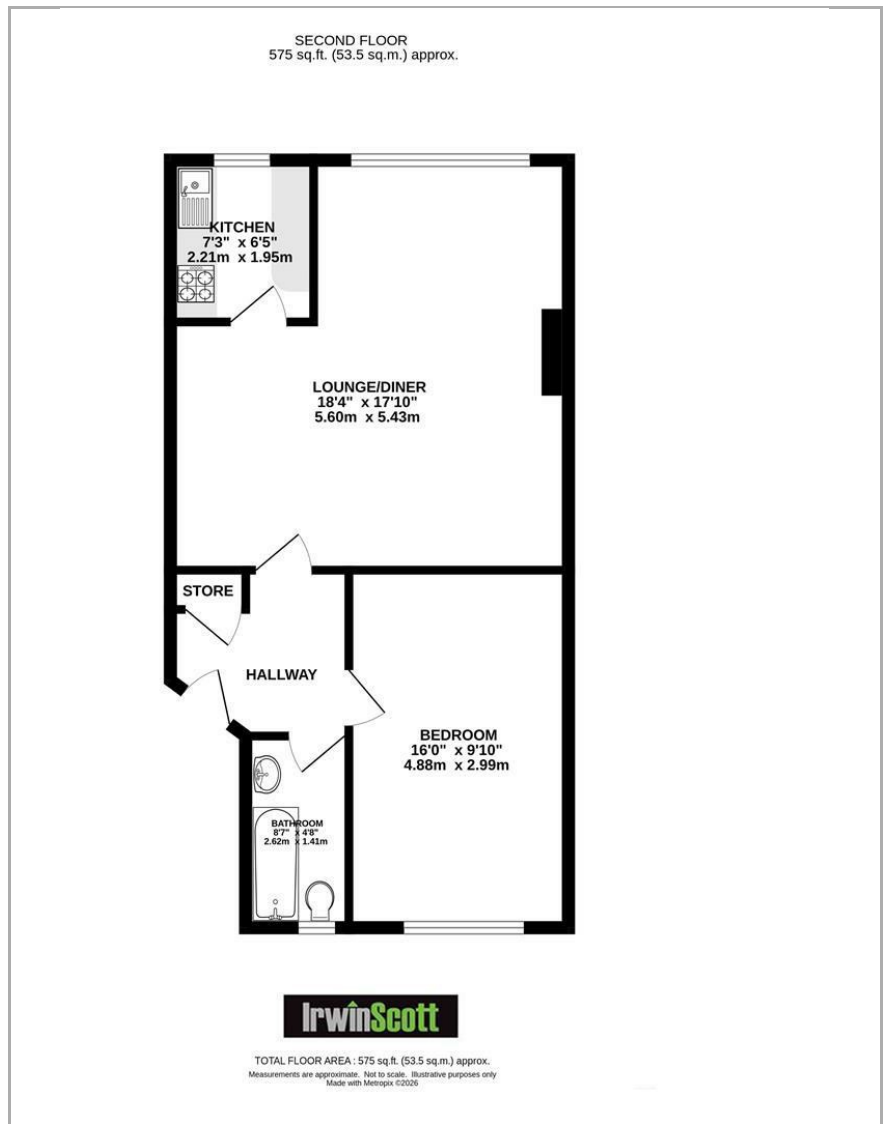
A great investment opportunity! Larger than average one bedroom top floor flat positioned above commercial premises. Southwood Road is a short distance from New Eltham train station and Village, with its many handy shops. The accommodation is well proportioned and offers lots of potential. We hold keys and are happy to arrange viewing appointments.

Tenure - Leasehold 148 years remaining
Service Charge - £2000.00 PA
Ground Rent - £60.00 PA
Council Tax - Greenwich Band B



Council Tax Band: B





Viewings

Viewings by arrangement only.
Call 0208 859 1100 to make an appointment.

EPC Rating:

C

Energy Efficiency Rating		Current	Potential
Very energy efficient - lower running costs			
(92 plus) A			
(81-91) B			
(69-80) C		74	79
(55-68) D			
(39-54) E			
(21-38) F			
(1-20) G			
Not energy efficient - higher running costs			
England & Wales		EU Directive 2002/91/EC	