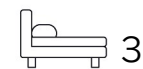




Living  
made  
better

Ryan Close  
Kidbrooke, SE3 9GE



Offers In Excess Of £700,000

# Ryan Close, Kidbrooke, SE3 9GE

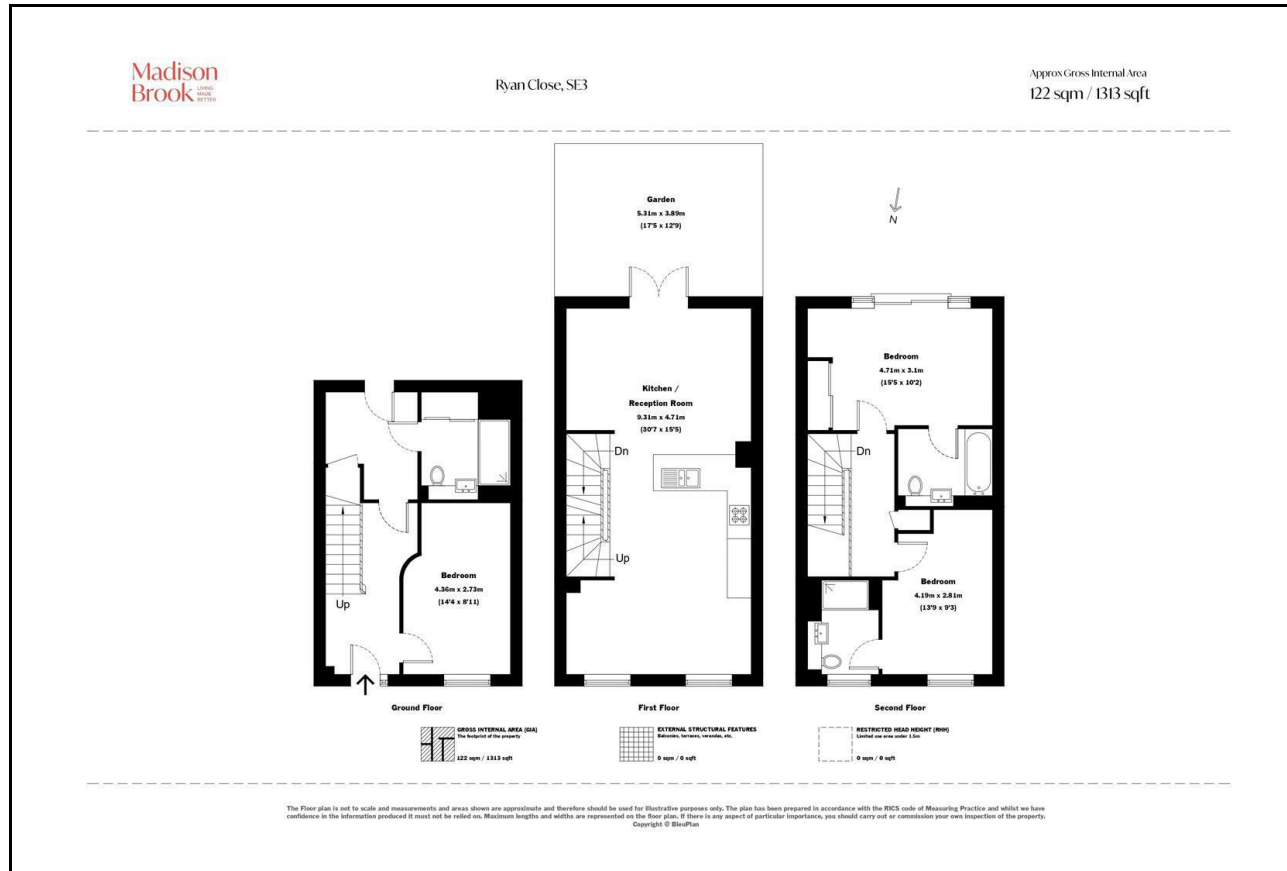
Madison Brook

## Property Summary

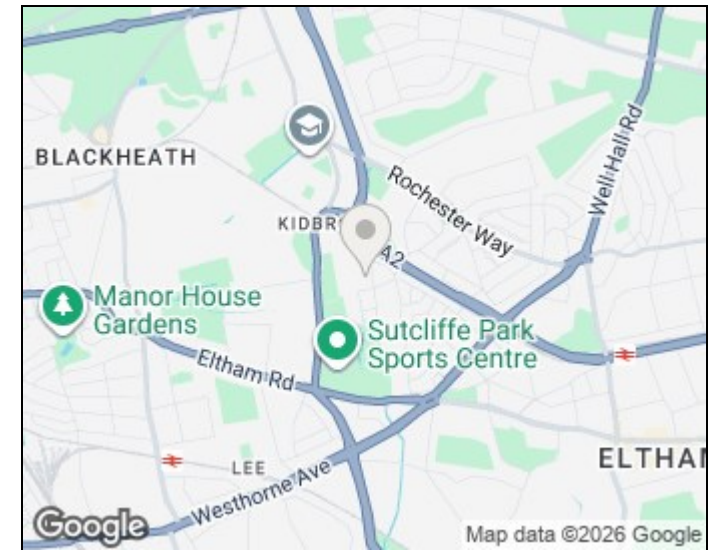
This beautifully presented three-bedroom townhouse in SE3 spans three spacious floors and offers a perfect blend of modern design and practicality. The ground floor features a well-sized bedroom with en-suite, ideal for guests or a home office. The first floor boasts a bright open-plan kitchen/reception with integrated appliances, a central island, and direct garden access. Upstairs, two further bedrooms and a stylish family bathroom provide excellent accommodation.

Set in a sought-after residential location with strong transport links, local parks, and highly rated schools nearby, this home is ideal for families and professionals alike.

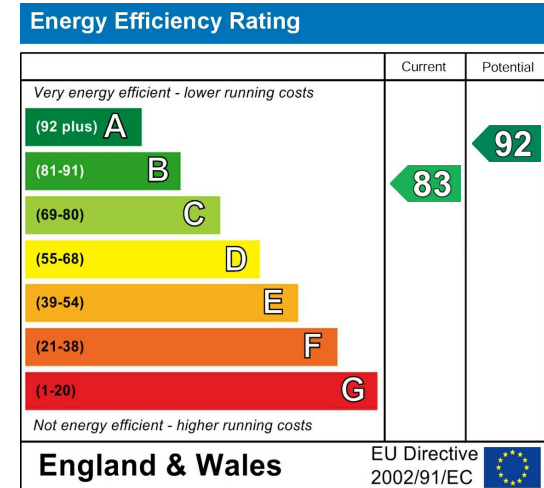
## Floorplan



## Area Map



## Energy Efficiency Graph



These particulars, whilst believed to be accurate are set out as a general outline only for guidance and do not constitute any part of an offer or contract. Intending purchasers should not rely on them as statements of representation of fact, but must satisfy themselves by inspection or otherwise as to their accuracy. No person in this firm's employment has the authority to make or give any representation or warranty in respect of the property.

43 Loampit Vale, Lewisham, London, SE13 7FT

Tel: 020 3946 6200 Email:

lewisham@madisonbrook.com

<https://madisonbrook.com/>