



Whittington Street
Neath, SA11 1AW

Offers over £140,000



Whittington Street

, Neath, SA11 1AW

An excellent opportunity to view this well-presented four-bedroom terraced property, ideally located on Whittington Street in the popular town of Neath.

The property offers two reception rooms, offering flexible living and dining space, along with a well-appointed kitchen. The property further benefits from both a ground floor bathroom and a first floor bathroom, providing added convenience.

There are four bedrooms, all offering ample space and natural light, ideal for families or those requiring additional home office space.

Externally, the property is situated in a convenient location within close proximity to a range of local amenities, including shops, schools, and transport links.

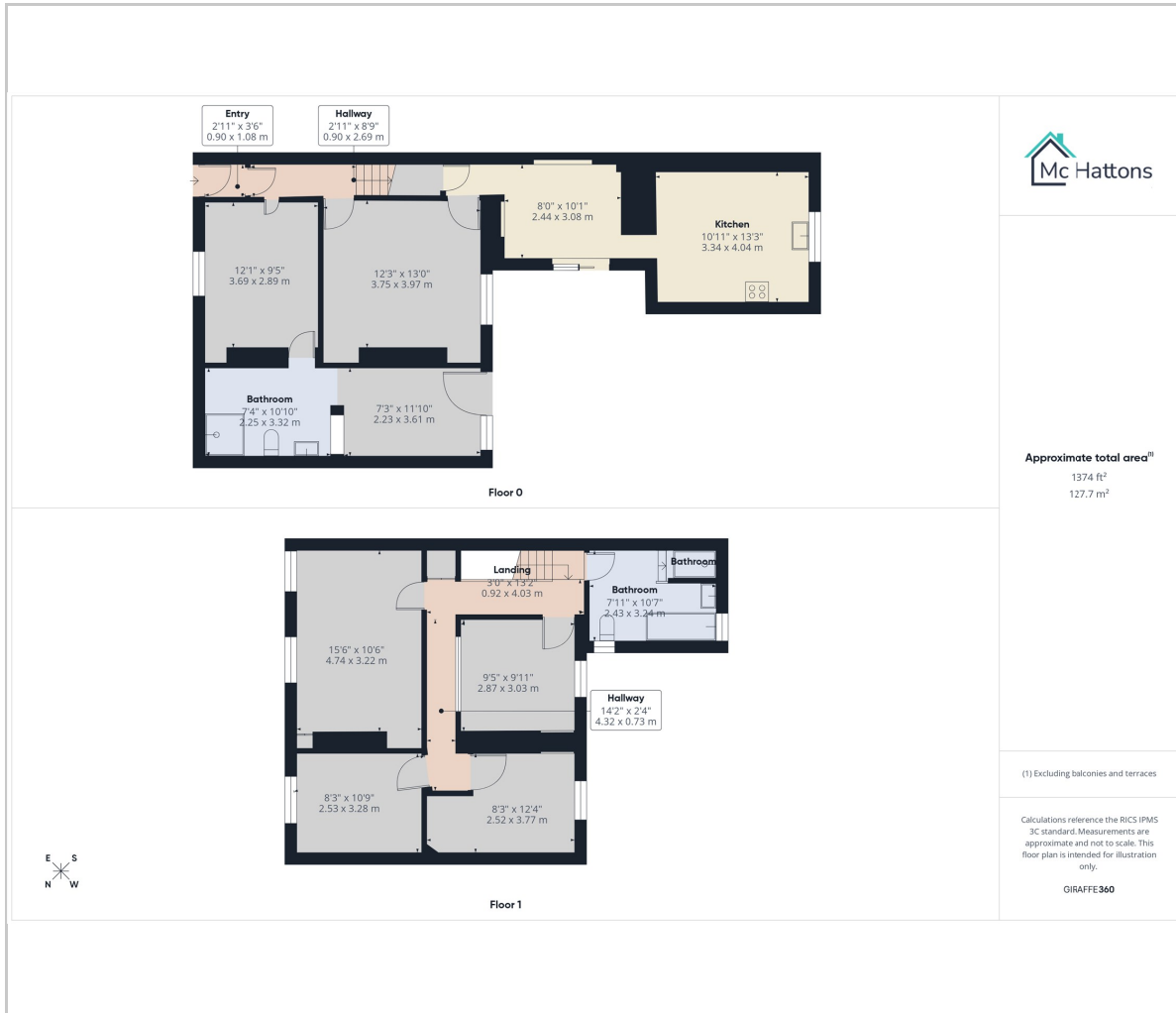
Viewing is highly recommend.

EPC - TBC





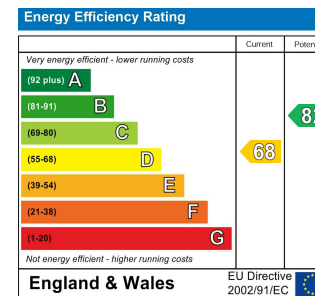
Floor Plan



Area Map



Energy Efficiency Graph



Viewing

Please contact our McHattons - Neath Office on 01639 501766 if you wish to arrange a viewing appointment for this property or require further information.

These particulars, whilst believed to be accurate are set out as a general outline only for guidance and do not constitute any part of an offer or contract. Intending purchasers should not rely on them as statements of representation of fact, but must satisfy themselves by inspection or otherwise as to their accuracy. No person in this firm's employment has the authority to make or give any representation or warranty in respect of the property.

40 Alfred Street, Neath, SA11 1EH
Tel: 01639 501766 Email: neath@mchattons.co.uk