



High Road, Loughton, IG10

Spencer Munson presents you the chance to rent a very good size split level maisonette above a clothes shop on Loughton High Road and in a great location for local supermarkets, the range of boutiques, shops, cafés, bars and restaurants, Loughton Leisure Centre, library and open forest land. It is also a short walk to Staples Road and Roding Valley schools as well as Loughton Central Line station with direct access to Stratford (Westfield shopping, Olympic Park and links to the DLR and mainline networks) and onto The City and West End of London with 24 hours service at weekends.

This flat has a large lounge open to a balcony, a kitchen/diner, a utility cupboard, two double and one single bedrooms, family bathroom, numerous storage cupboards, double glazing and gas central heating. Offered unfurnished and available now. EPC rating: D Council Tax Band D

Rent: £1,700 - Monthly



High Road, Loughton IG10

Lounge

5.24m (17'2) x 4.48m (14'8)
Glazed door leads to balcony overlooking the High Road



Kitchen/diner

4.09m (13'5) x 2.63m (8'8)
With electric cooker and a fridge freezer



Utility cupboard

Houses washing machine

Bedroom One

4.48m (14'8) x 3.26m (10'8)



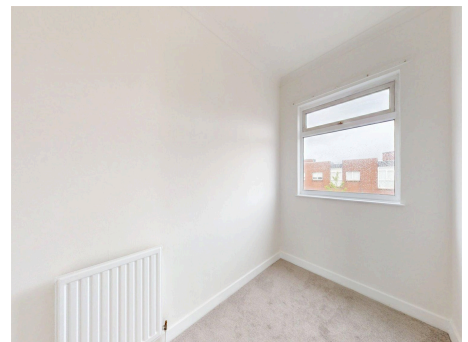
Bedroom Two

3.24m (10'8) x 2.86m (9'5)



Bedroom Three

3.3m (10'10) x 1.89m (6'2)



Bathroom

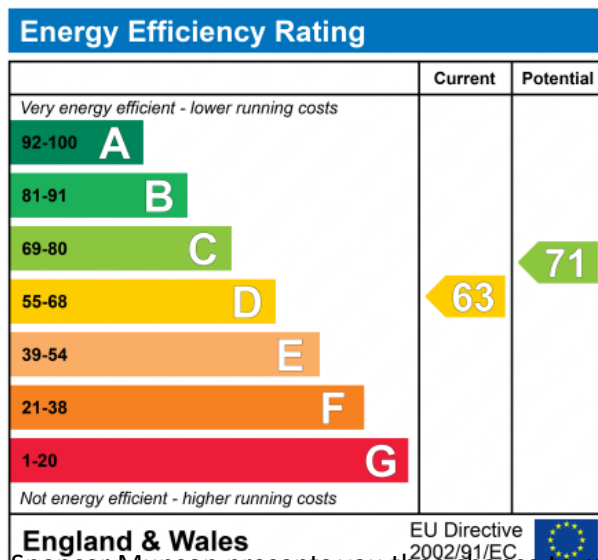


Exterior



Central Heating

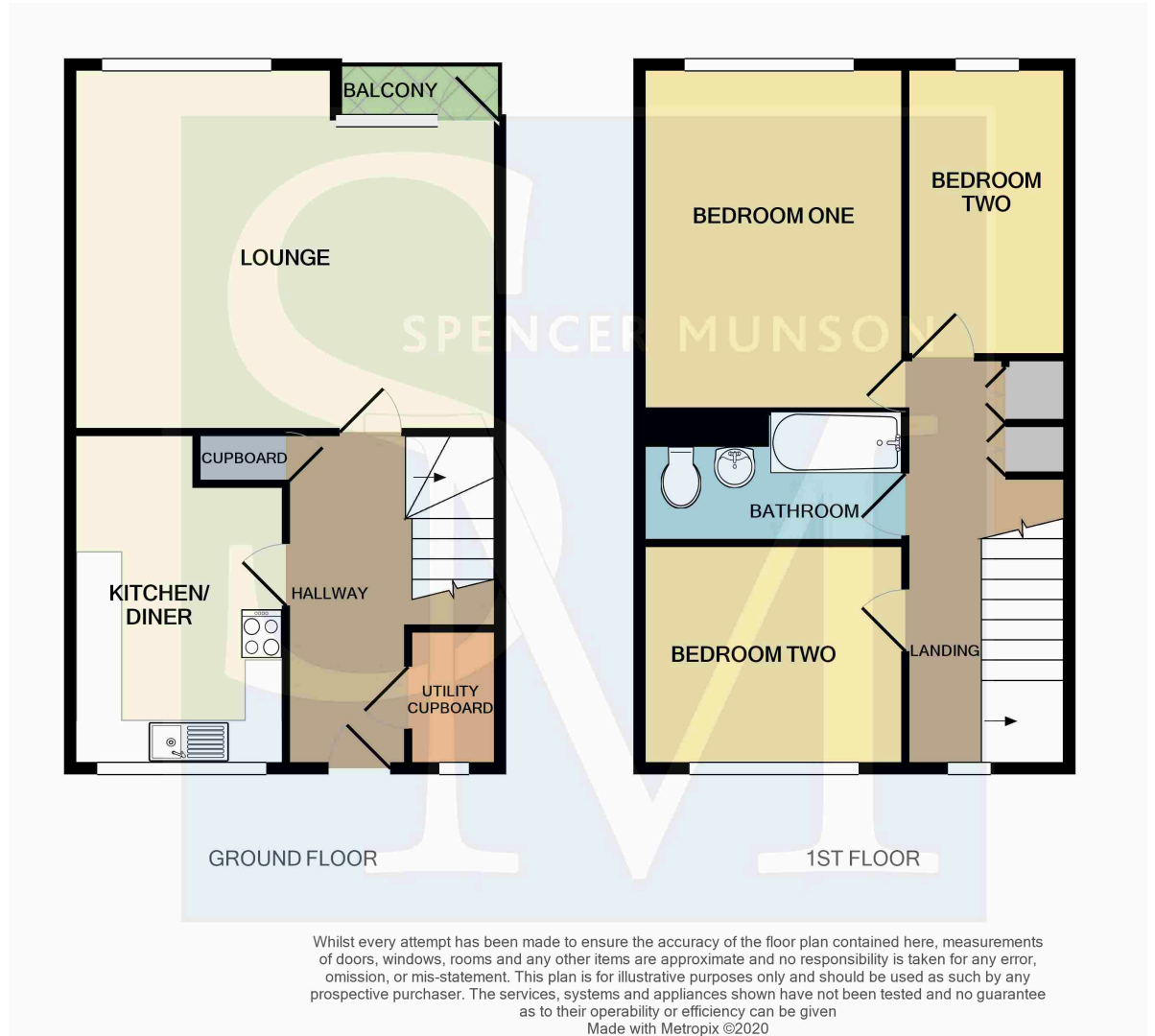
Double Glazing



Spencer Munson presents you the chance to rent a very good size split level maisonette above a clothes shop on Loughton High Road and in a great location for local supermarkets, the range of boutiques, shops, cafés, bars and restaurants, Loughton Leisure Centre, library and open forest land. It is also a short walk to Staples Road and Roding Valley schools as well as Loughton Central Line station with direct access to Stratford (Westfield shopping, Olympic Park and links to the DLR and mainline networks) and onto The City and West End of London with 24 hours service at weekends.

This flat has a large lounge open to a balcony, a kitchen/diner, a utility cupboard, two double and one single bedrooms, family bathroom, numerous storage cupboards, double glazing and gas central heating. Offered unfurnished and available now. EPC rating: D Council Tax Band D

High Road, Loughton IG10



Disclaimer

These particulars are intended to give a fair and substantially correct overall description for the guidance of intending tenants/purchasers and do not constitute an offer or part of a contract. Prospective tenants/purchasers and/or lessees should seek their own professional advice. All descriptions, dimensions, reference to condition, fixtures, fittings and necessary permissions for use and occupation and other details are given in good faith and are believed to be correct. However, intending tenants/purchasers should not rely on them as statements or representations of fact, but must satisfy themselves by inspection or otherwise as to the correctness of each of them. Fixtures and fittings shown in pictures and on viewings may well not be included in any tenancy/sale and any prospective tenant/purchaser must clarify this for themselves. All measurements and floorplans are approximate and produced as a guide in good faith. Please note that some of the furniture and decor items shown in these images have been digitally added using AI technology for illustrative purposes. The actual property may differ in appearance. Prospective buyers or renters are encouraged to visit the property in person to get an accurate representation.