



We are delighted to offer this well presented two bedroom first floor flat offered unfurnished. The accommodation comprises of open plan lounge/diner/kitchen, master bedroom (with EN-SUITE SHOWER), one further bedroom and bathroom. Property also benefits from off road parking. Located in the popular area of Haydon End within walking distance to the Orbital Shopping Centre. Viewing is highly recommended.



£950 PCM

VISTULA CRESCENT

Haydon End, Swindon, Wilts SN25 1QE

PRIMARY
HOMES & LETTINGS

AVAILABLE FROM 11.04.26

First Floor Flat

Two DOUBLE Bedrooms

En-Suite Shower To Master

Open Plan Lounge/Diner/Kitchen

Allocated Parking

EPC RATING - B

Unfurnished

Council Tax Band C

Excellent Location

Tenant Information

Length of Tenancy: Long term let with initial tenancy agreement of 6 months

Council: Swindon Borough Council

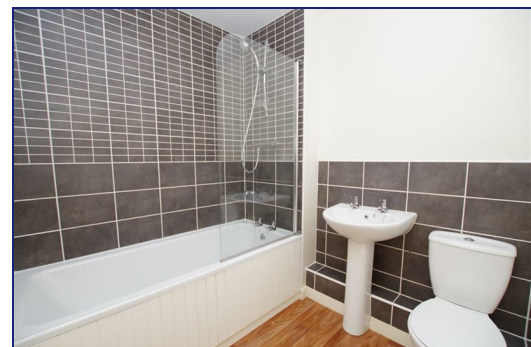
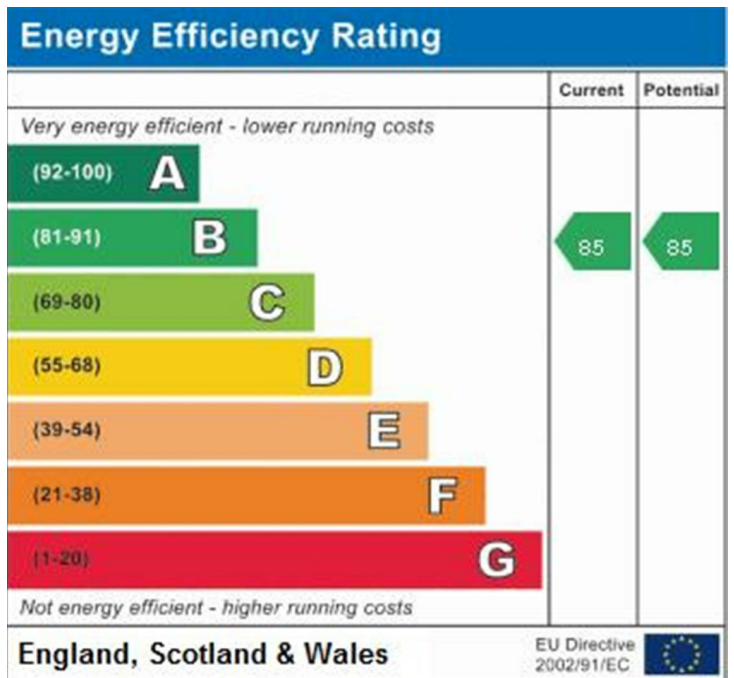
Tax Band: C

Photographs

Please note that photos were taken prior to the current tenants moving into the property.

Viewings

Strictly via our Swindon office telephone (01793) 641641.



01793 641641

101 Commercial Road, Swindon, SN1 5PL

info@primaryhomesandlettings.co.uk

PRIMARY
HOMES & LETTINGS