



THAMES STREET, SE10

£350,000

Well presented apartment
Two bedrooms
Spacious living room
Heart of Greenwich
Excellent transport links
Energy rating: c

@marshandparsons
marshandparsons.co.uk

MARSH &
PARSONS



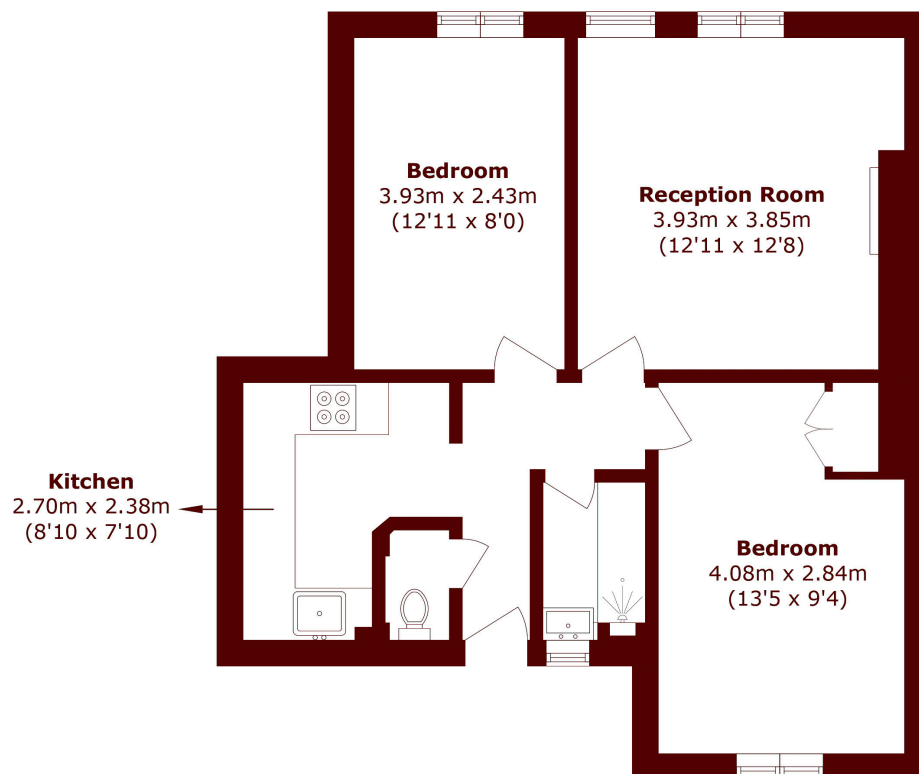
ABOUT THE PROPERTY

Situated in the heart of Greenwich, this well-presented two bedroom purpose built apartment comprises two bedrooms, a well-appointed bathroom, and a bright, spacious living area enhanced by tall windows that flood the home with natural light, creating an inviting and airy atmosphere throughout.

Residents benefit from the charm and character of a World Heritage setting, with the iconic Greenwich Park, the historic Royal Observatory, and the vibrant amenities of Greenwich Market all within easy reach. There are excellent transport connections, including DLR and mainline rail services providing swift access to central London and Canary Wharf.



STEP INSIDE THAMES STREET



Total area (approx.): 51.6 sq. m (555.4 sq. ft)

Greenwich
020 8312 8312

Energy Rating: C We aim to make our particulars both accurate and reliable. However, they are not guaranteed; nor do they form part of an offer or contract. If you require clarification on any points then please contact us, especially if you're traveling some distance to view. Please note that appliances and heating systems have not been tested and therefore no warranties can be given as to their good working order

**MARSH &
PARSONS**