

first for homes

first for property in life - firstforhomes.co.uk

Contact Allan England's Team

01592 752 944



John Knox Gardens, Glenrothes
Offers over £299,995

 *Premium Property*

John Knox Gardens, Glenrothes



Beautifully Upgraded 3 Bedroom Detached Bungalow with Detached Garage, South West Facing Rear Garden, Nestled in a Cul-De-Sac Setting. Sought After Area of Pitcairn, Glenrothes

Allan England's award winning team at first for homes are proud to welcome to the market this beautiful upgraded 3-bedroom Detached family Bungalow situated within the highly sought-after area of Pitcairn, North Glenrothes. The property is situated in a quite cul-de-sac setting and boasts bright and spacious all-on-the-level accommodation comprising: welcoming entrance hall, bright and spacious lounge, open plan modern kitchen/diner/island, utility room, master bedroom with newly upgraded en-suite in 2025, 2 further bedrooms and upgraded family bathroom (2025). The property has benefited from new windows & doors. Externally there is a driveway to accommodate 3 cars and a single garage. This lovely family home also benefits from stunning south west facing rear garden grounds (space to extend subject to planning consents). Early viewing is essential to fully appreciate all this lovely family home has to offer. Don't miss out!

Home Report - £310,000

EPC - C

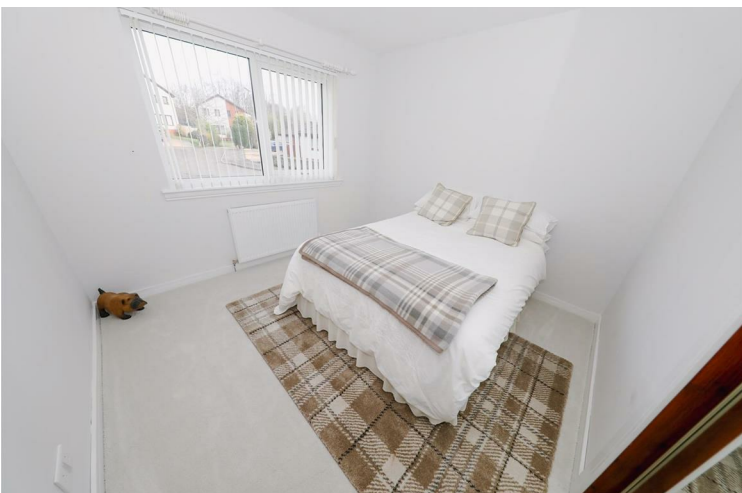
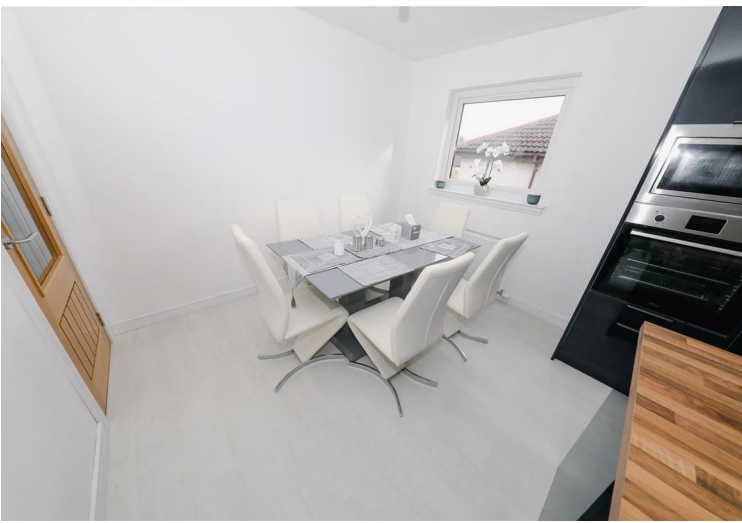
Council Tax - E

Call first for homes - first for trust... first for service... first for aftercare!

Glenrothes is regarded as one of the most successful Towns in Scotland with a wealth of local amenities including Kingdom Shopping Centre as well as sport and leisure at Michael Woods and a multi-screen cinema. Glenrothes boasts its very own 18-hole Golf course and both Primary and Secondary schooling are available. For the commuter the A92 allows swift access to Edinburgh and there are railway stations at both Thornton and Markinch.

These particulars are prepared on the basis of information provided by our clients. We have not tested the electrical system or appliances, nor where applicable, any central heating system. All sizes are recorded by electronic tape measurements to give an indicative, approximate size only. Prospective purchasers should make their own enquiries - no warranty is given or implied. This schedule is not intended to, and does not form any contract.





SITUATION – Glenrothes
ENTRANCE HALLWAY
LOUNGE 15'8" x 11'11" approx (4.80m x 3.65m approx)
KITCHEN/DINER 18'6" x 10'4" approx (5.64m x 3.16m approx)
UTILITY 6'4" x 6'4" approx (1.95m x 1.94m approx)
BEDROOM 1 11'4" x 10'2" approx (3.47m x 3.10m approx)
EN-SUITE (UPDATED 2025) 10'1" x 7'11" approx (3.08m x 2.43m approx)
BEDROOM 2 10'4" x 9'10" approx (3.16m x 3.01m approx)
BEDROOM 3 10'5" x 8'2" approx (3.18m x 2.49m approx)
FAMILY BATHROOM (UPGRADED 2025) 12'2" x 5'9" approx (3.73m x 1.76m approx)
SINGLE GARAGE
DRIVEWAY TO SIDE
GARDEN GROUNDS TO FRONT & REAR
INFORMATION



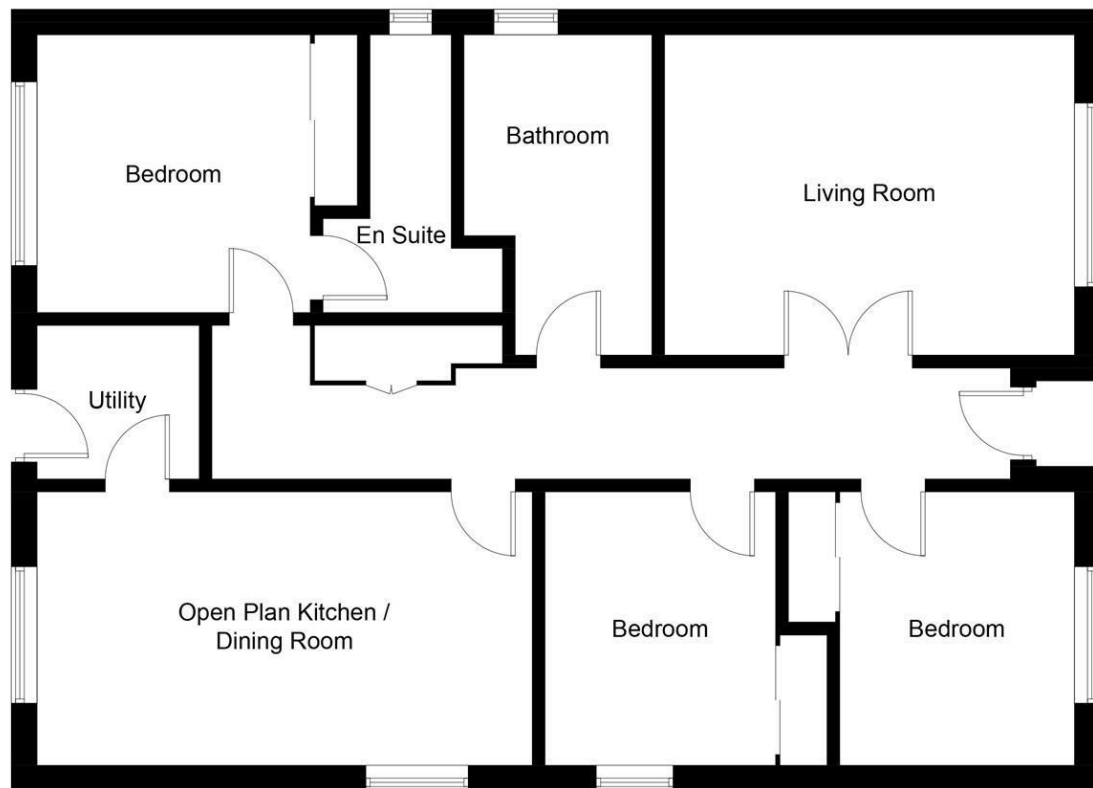


Illustration for identification purposes only, measurements are approximate, not to scale. Fourlabs.co © (ID1276928)

Information

These particulars are prepared on the basis of information provided by our clients. We have not tested the electrical system or any electrical appliances, nor where applicable, any central heating system. All sizes are recorded by electronic tape measurement to give an indicative, approximate size only. Prospective purchasers should make their own enquiries – no warranty is given or implied. This schedule is not intended to, and does not form any contract.

FREE Valuation

Selling Your Home?

Choose first for homes - a highly experienced estate agency team you can trust to sell your home at the highest possible price. Offering fantastic savings on selling fees, with no compromise on service, free professional photography highlighting your home in its best light, first for homes will be your first choice. Contact us today to arrange your appointment.



first for trust



first for service



first for aftercare