



Connells

Hern Road
Brierley Hill

Hern Road
Brierley Hill DY5 2PN

for sale offers over
£230,000



Property Description

Hern Road is off Stamford Road. The ever popular Peters Hill primary school is very close by. Elevated position with distant views. Stourbridge town centre is also close by.

To The Front

Lawn to the front with tarmac driveway providing off road parking and pathway to the front door.

Vestibule Porch

Double glazed entrance door to the front elevation, double glazed window to the side elevation, door to;

Lounge

16' 5" max x 13' 5" max (5.00m max x 4.09m max)

Double glazed window to the front elevation, two radiators, spotlights to ceiling and stairs off to first floor.

Kitchen/Diner

13' 4" x 9' 10" (4.06m x 3.00m)

Landing

Access to loft and doors to bedrooms and bathroom.

Bedroom One

13' 5" x 8' 11" (4.09m x 2.72m)

Double glazed window to the front elevation and radiator.

Bedroom Two

11' 2" x 6' 11" (3.40m x 2.11m)

Double glazed window to the rear elevation and radiator

Bedroom Three

7' 11" x 6' 1" (2.41m x 1.85m)

Double glazed window to the rear elevation and feature radiator.

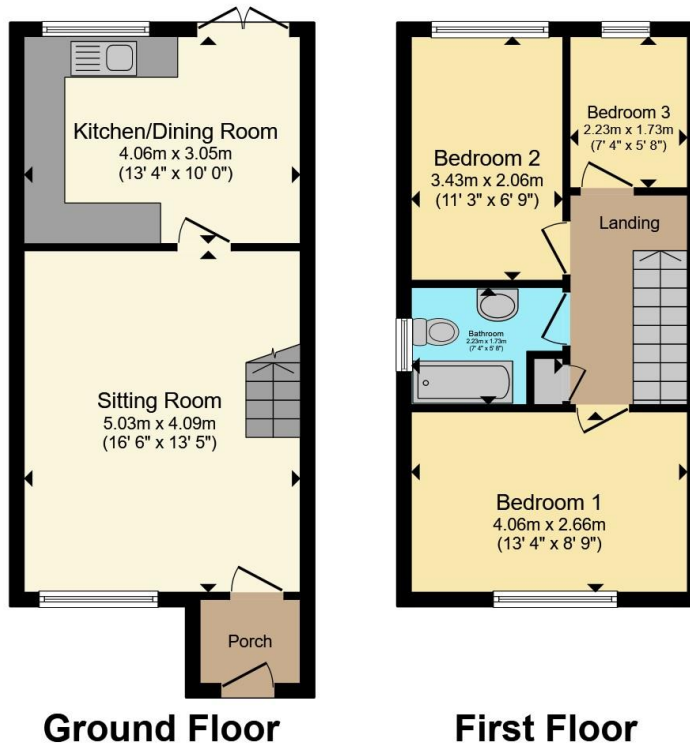
Bathroom

Obscure double glazed window to the side elevation and suite comprising; bath with shower over, wash hand basin, wc, radiator rail, spotlights to ceiling and extractor fan.

Rear Garden

Fully enclosed rear garden comprising of a gravel patio with steps to the lawn, paved patio with further lawn beyond, two sheds to the side, flowers, shrubs and gate to side.

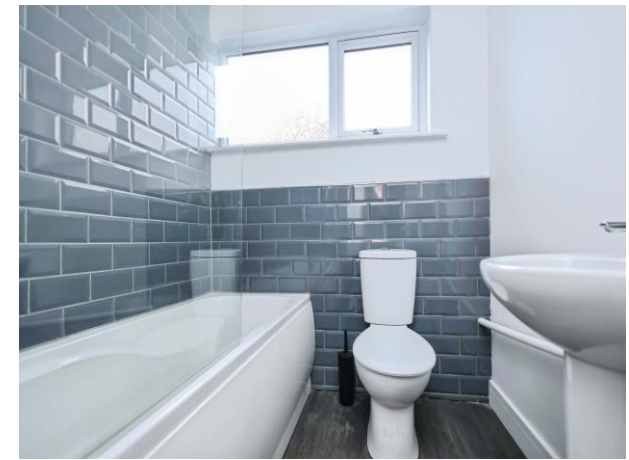




Total floor area 68.4 m² (736 sq.ft.) approx

This floor plan is for illustrative purposes only. It is not drawn to scale. Any measurements, floor areas (including any total floor area), openings and orientation are approximate. No details are guaranteed, they cannot be relied upon for any purpose and they do not form part of any agreement. No liability is taken for any error, omission or misstatement. A party must rely upon its own inspection(s). Powered by www.propertybox.io

Connells



To view this property please contact Connells on

T 01384 374 545
E stourbridge@connells.co.uk

11B St. Johns Road
 STOURBRIDGE DY8 1EJ

EPC Rating: D Council Tax
 Band: B

view this property online connells.co.uk/Property/SBR313225

Tenure: Freehold



1. MONEY LAUNDERING REGULATIONS Intending purchasers will be asked to produce identification documentation at a later stage and we would ask for your co-operation in order that there will be no delay in agreeing the sale. 2. These particulars do not constitute part or all of an offer or contract. 3. The measurements indicated are supplied for guidance only and as such must be considered incorrect. Potential buyers are advised to recheck measurements before committing to any expense. 4. We have not tested any apparatus, equipment, fixtures, fittings or services and it is in the buyers interest to check the working condition of any appliances.

Connells Residential is registered in England and Wales under company number 1489613, Registered Office is Cumbria House, 16-20 Hockliffe Street, Leighton Buzzard, Bedfordshire, LU7 1GN. VAT Registration Number is 500 2481 05.

See all our properties at www.connells.co.uk | www.rightmove.co.uk | www.zoopla.co.uk

Property Ref: SBR313225 - 0003