



Camberwell Church Street | London
| SE5

Leasehold

£550,000

- Two double bedrooms
- Private roof terrace
- Double glazed windows
- Heating and hot water included
- Wooden floors
- Chain free
- Communal garden
- Residents parking
- Local parks and green spaces
- Excellent bus routes

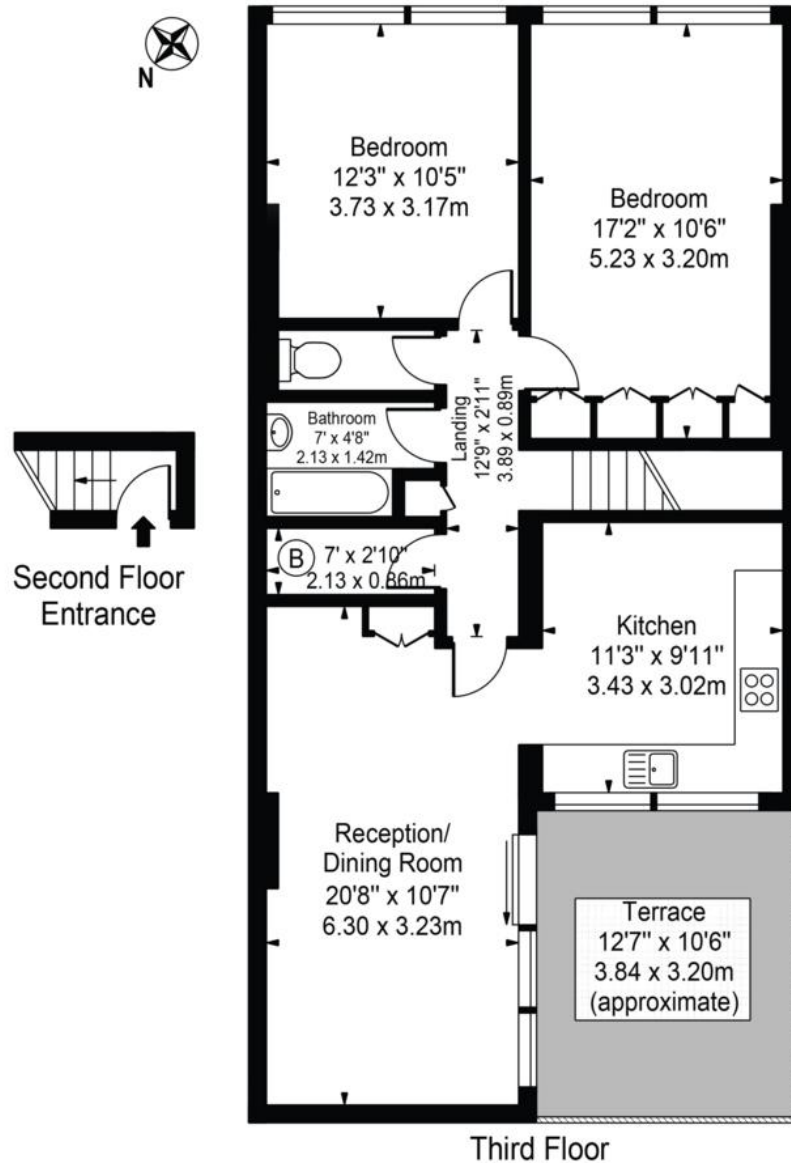


A beautifully presented and stylish two bedroom apartment, set within the highly sought after Gilesmead Estate, an architecturally distinctive development known for its strong sense of community. Positioned on the third floor, this bright and spacious home has a generous private terrace, is neutrally decorated throughout, perfect for entertaining and ready to move straight into. Heating and hot water are included within the service charge, double-glazed windows throughout, secure bike storage, and private off road parking make it an ideal purchase. Ideally located on Church Street, the property is within easy reach of the vibrant amenities of Camberwell and Peckham, renowned for their excellent selection of bars, cafés, and restaurants. Beautiful green spaces such as Burgess Park and Ruskin Park are also



Score	Energy rating	Current	Potential
92+	A		
81-91	B		
69-80	C	72 C	76 C
55-68	D		
39-54	E		
21-38	F		
1-20	G		

Gilesmead,
Camberwell Church Street, SE5 7LN
Approx. Gross Internal Area 831 Sq Ft - 77.20 Sq M



Third Floor
For Illustration Purposes Only - Not To Scale

This floor plan should be used as a general outline for guidance only and does not constitute in whole or in part an offer or contract. Any intending purchaser or lessee should satisfy themselves by inspection, searches, enquiries and full survey as to the correctness of each statement. Any areas, measurements or distances quoted are approximate and should not be used to value a property or be the basis of any sale or let.

Viewing Arrangements

Strictly by appointment

Contact Details

121 Denmark Hill

London

SE5 8EN

www.urbanvillagehomes.co.uk

sales@urbanvillagehomes.com

020 3519 9121

Agents Note: Whilst every care has been taken to prepare these sales particulars, they are for guidance purposes only. All measurements are approximate and for general guidance purposes only and whilst every care has been taken to ensure their accuracy, they should not be relied upon and potential buyers are advised to recheck the measurements.