



Constables
SALES & LETTINGS

Neston Road

Willaston, Neston

£225,000

white feather home

WILLASTON VILLAGE GREEN

INTERIORS - GIFTS - DESIGN

A fantastic opportunity to purchase the freehold interest in a double fronted retail premises in the heart of Willaston, Cheshire.

The premises has been operating as a homeware and gift shop, interested parties may wish to continue with a similar business, an alternative retail business or office use subject to obtaining planning approval. The accommodation extends to approximately 835 square feet and comprises; two retail areas, store room, kitchen and W.C.

Willaston village has a number of free car parks close to the premises.





WHITE FEATHER

Constables

SALES & LETTINGS

- Ground Floor Commercial Premises
- Freehold
- Prime Willaston Village Location
- Ideal for retail or office space (subject to change of use)
- Free Parking Near By
- Viewing Strictly By Appointment

Location

Willaston is a large Village with a strong sense of community who support the local businesses exceptionally well. The village provides a comprehensive range of local services for everyday needs including convenience store, café, deli, bakery, two village pubs, doctor and dentist surgeries and a primary school.

Tenure

Freehold

Legal Costs

Each party will be responsible for their own legal costs.

VAT

VAT may be payable on the purchase price


EPC (non-domestic)

114E

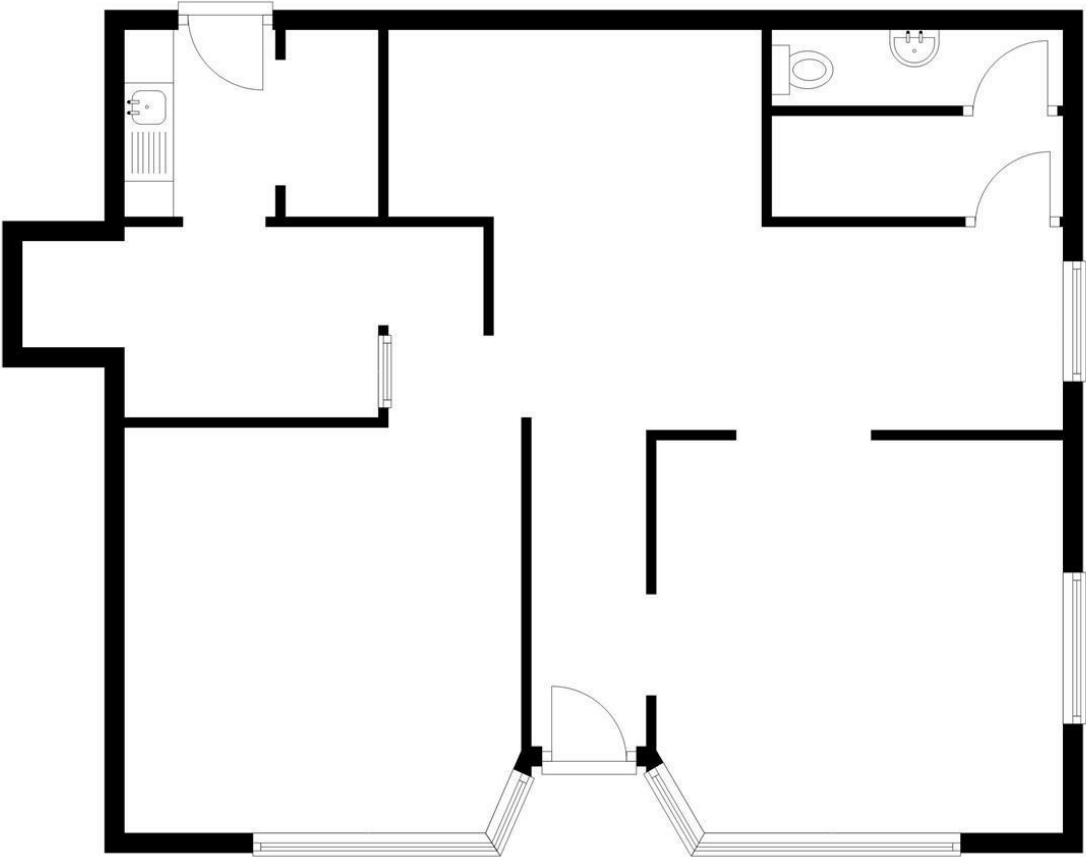




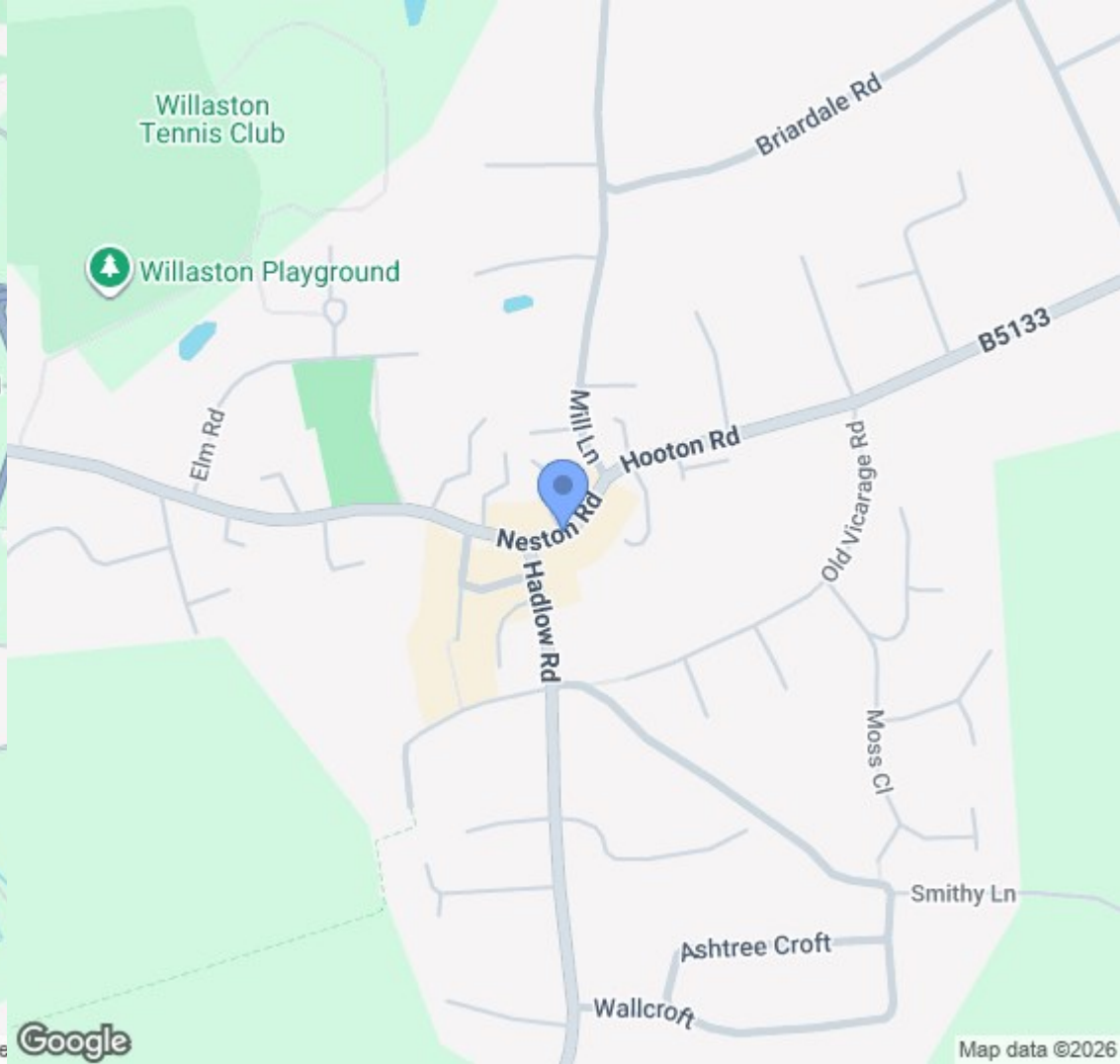
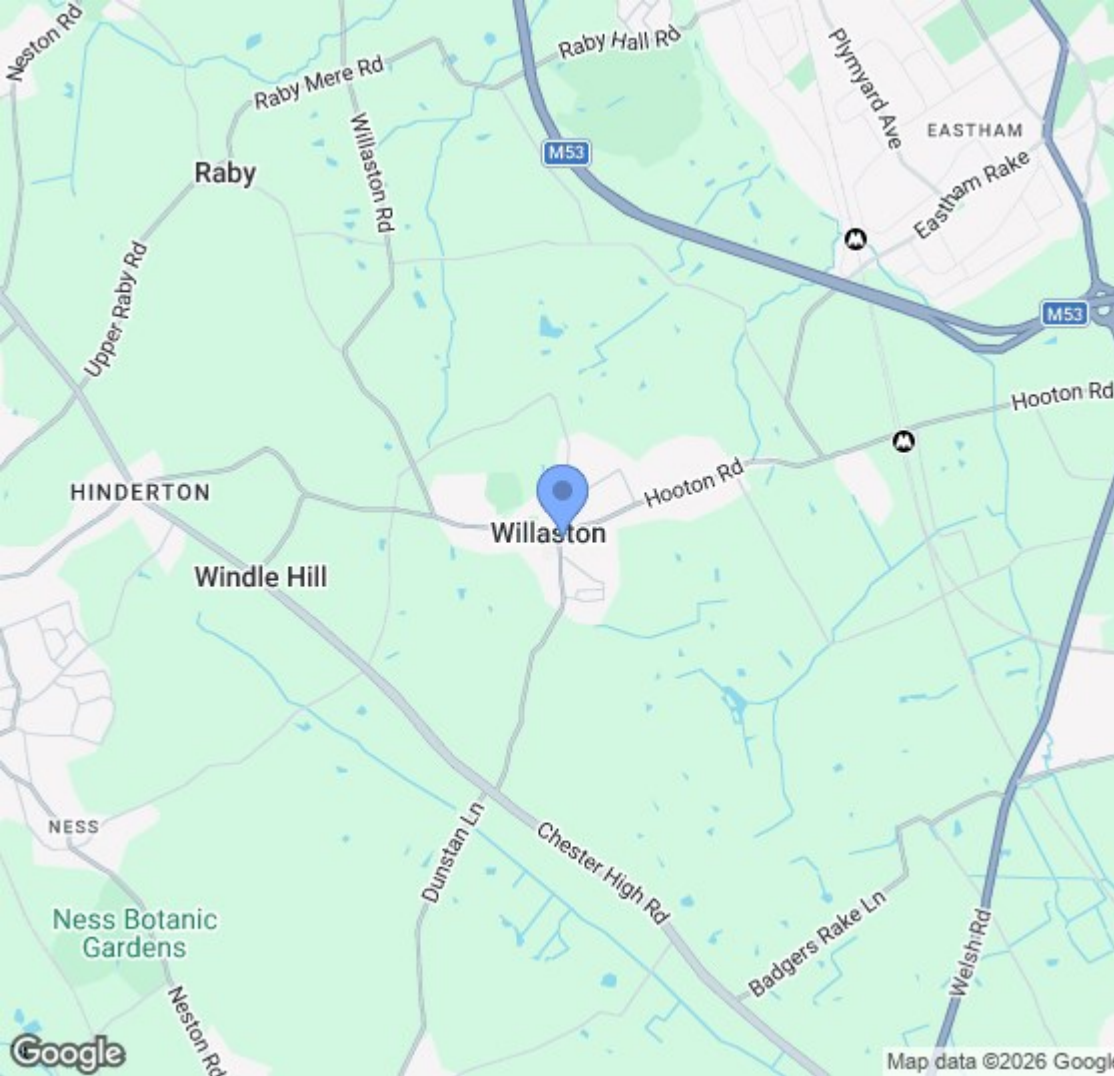
EPC & Floor Plan

| Energy Efficiency Rating | | |
|--|----------------------------|---|
| | Current | Potential |
| <i>Very energy efficient - lower running costs</i> | | |
| (92 plus) A | | |
| (81-91) B | | |
| (69-80) C | | |
| (55-68) D | | |
| (39-54) E | | |
| (21-38) F | | |
| (1-20) G | | |
| <i>Not energy efficient - higher running costs</i> | | |
| England & Wales | EU Directive 2002/91/EC |  |

Ground Floor
Approx. 77.6 sq. metres (835.6 sq. feet)



Total area: approx. 77.6 sq. metres (835.6 sq. feet)
White Feather, Neston Road, WILLASTON



Location Map

Constables

S A L E S & L E T T I N G S

21 High Street, Neston

South Wirral, Neston, Cheshire

www.constablesestateagents.co.uk

info@constablesestateagents.co.uk

0151 353 1333