



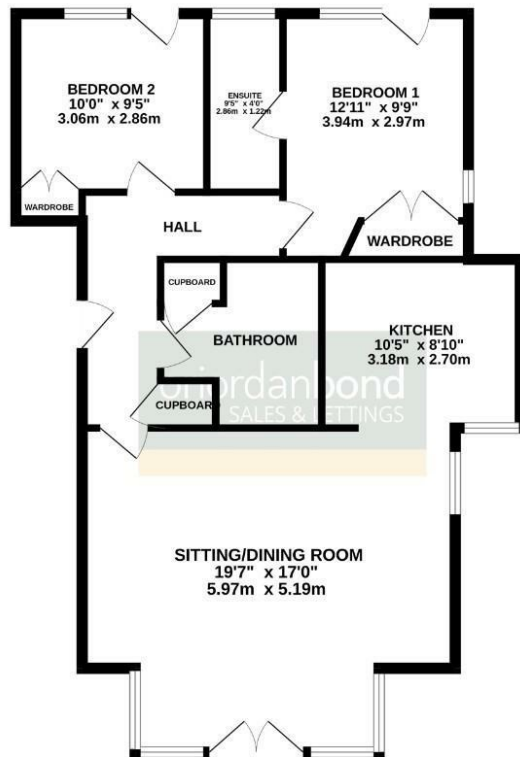
St. Crispin Crescent

St. Crispin, Northampton

oriordanbond
SALES & LETTINGS



GROUND FLOOR
808 sq.ft. (75.1 sq.m.) approx.



TOTAL FLOOR AREA : 808 sq.ft. (75.1 sq.m.) approx.
Whilst every attempt has been made to ensure the accuracy of the floorplan contained herein, measurements of doors, windows, rooms and any other items are approximate and no responsibility is taken for any error, omission or misstatement. This plan is for illustrative purposes only and should be used as such by any prospective purchaser. The services, systems and appliances shown have not been tested and no guarantee as to their operability or efficiency can be given.
Made with floorplan CC025

St. Crispin Crescent

St. Crispin
NN5 6GD

PRICE £189,995

A well presented spacious two bedroom apartment located on the top floor within the block, in the popular area of St. Crispin. Presented to a great standard throughout, the property would make an ideal purchase for first time buyers and investors.

The accommodation comprises entrance hall, large sitting/dining room with Juliette balcony and an opening to a large modern fitted kitchen with integrated appliances, two double bedrooms both with fitted wardrobes and en-suite to the master and a fitted three-piece bathroom with shower over bath. Benefits include one allocated parking space, gas radiator heating, double glazing and a security intercom entry system. (B/808/-)

Leasehold Information: Lease Remaining - 107 years (as of 2026) / Ground Rent - £95 per annum / Service Charge - £2000 per annum

Additional information

- Council Tax Band: C
- Energy Efficiency Rating: C

Viewing

Viewing strictly by appointment – details below

Disclaimer

O'Riordan Bond Estate Agents Limited has not tested apparatus, equipment, fittings or services and so cannot verify they are in working order. The buyer is advised to obtain verification from their solicitor or surveyor.

O'Riordan Bond Duston Sales
01604 589007

duston@oriordanbond.co.uk

