



MILES ESTATE AGENTS

26 Burge Crescent Cotford St. Luke
Taunton TA4 1PD £230,000



SUPERB VALUE A newly re-decorated 3 bed end terrace house with garage and parking in this ever popular modern village 5 miles West of Taunton. Good size kitchen/breakfast room, enclosed garden and immediately available with NO ONWARD CHAIN. Freehold Council Tax Band C EPC : C.





Features:

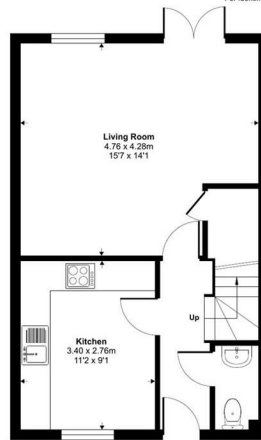
- Entrance hall
- Kitchen/breakfast room
- Living room
- Cloakroom
- Master bedroom with en suite
- 2 further bedrooms
- Family bathroom
- Enclosed garden
- Garage & off road parking
- Freehold
- NO ONWARD CHAIN
- Council Tax Band C
- EPC : C



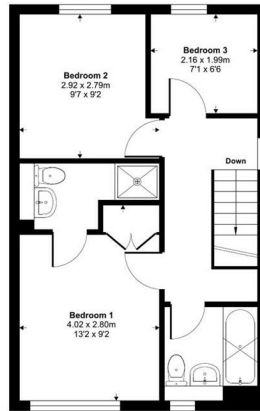
Burge Crescent, Cotford St. Luke, Taunton, TA4

Approximate Area = 806 sq ft / 74.8 sq m

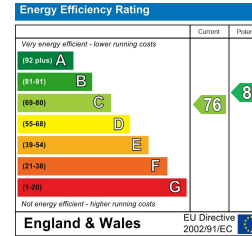
For identification only - Not to scale



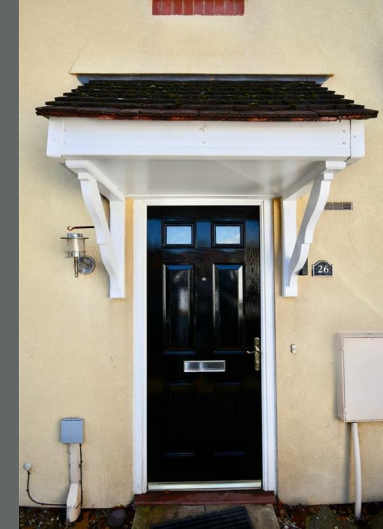
GROUND FLOOR



FIRST FLOOR



Floor plan produced in accordance with RICS Property Measurement 2nd Edition, incorporating International Property Measurement Standards (IPMS Residential). © nchcom 2025. Produced for Miles Estate Agents Limited T/A Miles Estate Agents. REF: 1334772



Viewings strictly through the selling agents:

Miles Estate Agents

2 Piffin Lane, Bishops Lydeard, Taunton, Somerset, TA4 3AS

Tel: 01823 470 500

lydeard@milesestateagents.co.uk

www.milesestateagents.co.uk



rightmove

OnTheMarket.com

MILES ESTATE AGENTS



BEST

ESTATE AGENT GUIDE
2019 : EXCEPTIONAL

SALES