



2d Park View, Maybole

In Excess of £30,000

DONALD
ROSS
RESIDENTIAL



2d Park View

Maybole,

1 bedroom first floor flat with countryside views.
Ideal renovation project with great potential.
Quiet location close to Maybole town centre.
Council Tax band: A

- 1-bedroom first floor flat
- Ideal investment or renovation project
- Open countryside views to the rear
- Spacious lounge area
- Fitted kitchen with scope to upgrade
- Double bedroom
- Bathroom with three-piece suite
- Quiet residential location
- Close to local amenities and transport links
- Excellent potential to add value





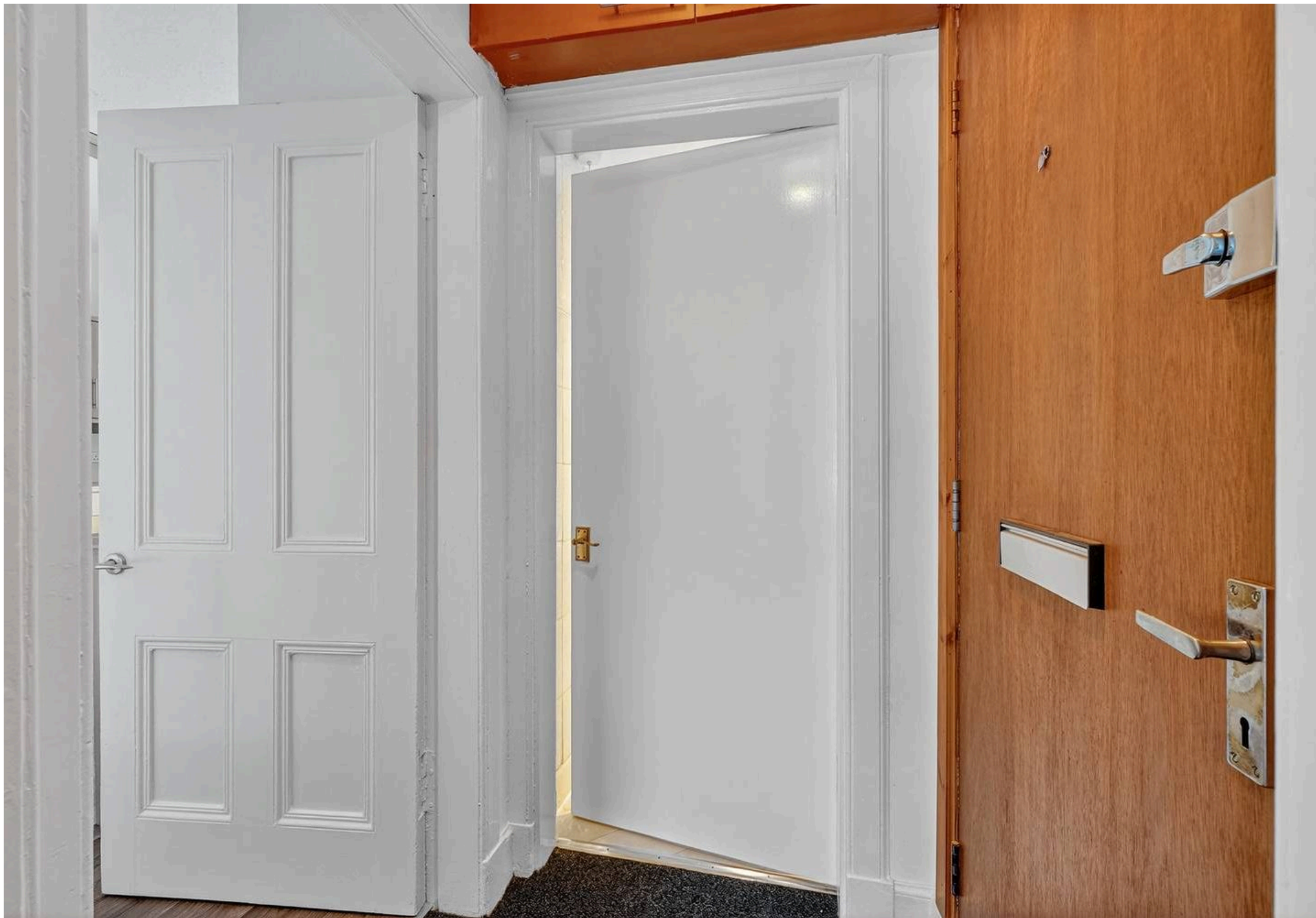










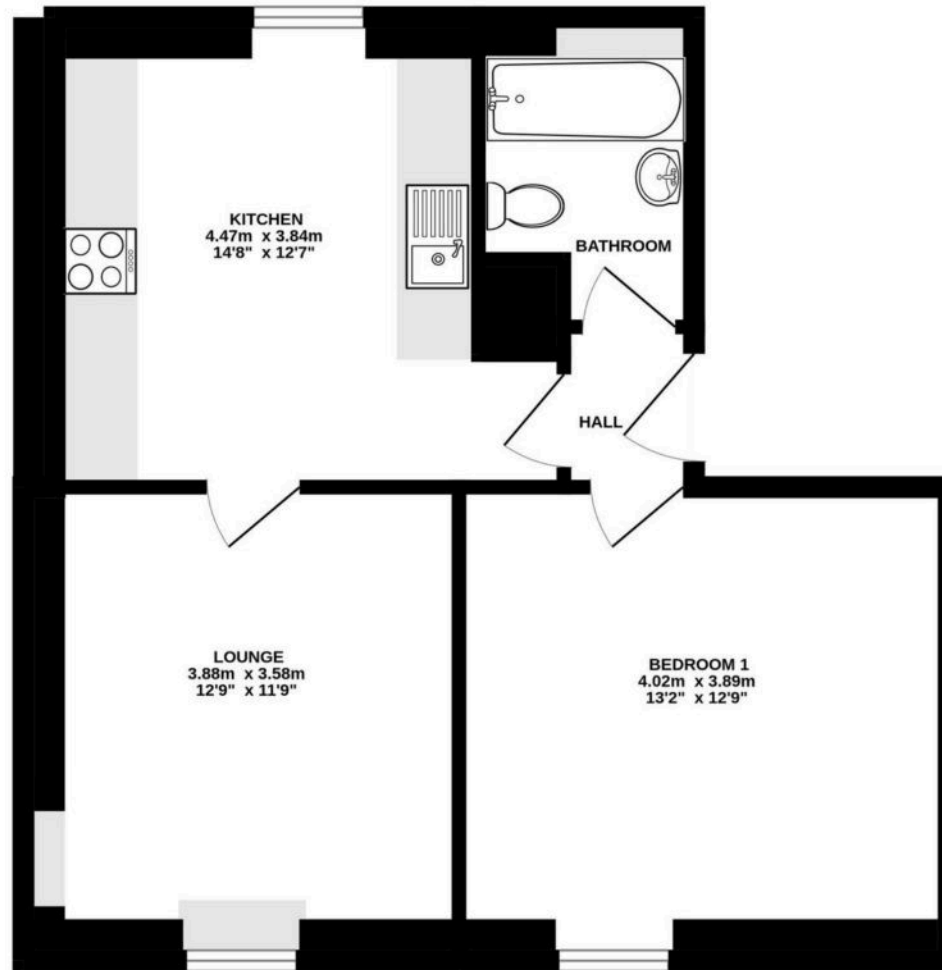








1ST FLOOR



ALL MEASUREMENTS

Whilst every attempt has been made to ensure the accuracy of the floorplan contained here, measurements of doors, windows, rooms and any other items are approximate and no responsibility is taken for any error, omission or mis-statement. This plan is for illustrative purposes only and should be used as such by any prospective purchaser. The services, systems and appliances shown have not been tested and no guarantee as to their operability or efficiency can be given.
Made with Metropix ©2025



Donald Ross Residential Ayr

Donald Ross, 1 Beresford Terrace - KA7 2ER

01292 288222 • office@donaldross.co.uk • www.donaldross.co.uk

While every effort has been made to ensure accuracy, buyers should independently verify all details and review the Home Report before submitting an offer. No warranty or representation is given regarding the property, and neither the agent nor the seller accepts responsibility for any inaccuracies. Buyers must satisfy themselves on all legal aspects.