

clever



46 Ashford Road

, Plymouth, PL4 7BN

Offers over £290,000



Fully Let 25/26 - Nestled on Ashford Road in the vibrant city of Plymouth, this highly maintained house presents an exceptional opportunity for those seeking a well-established House in Multiple Occupation (HMO). Boasting six spacious bedrooms, including five double letting rooms, this property is fully let for the upcoming academic year, making it an ideal investment for landlords or those looking to accommodate students.

The interior of the house is thoughtfully designed, featuring a modern kitchen equipped with integrated appliances, perfect for communal living. The property also includes two well-appointed bathrooms, ensuring convenience for all residents.

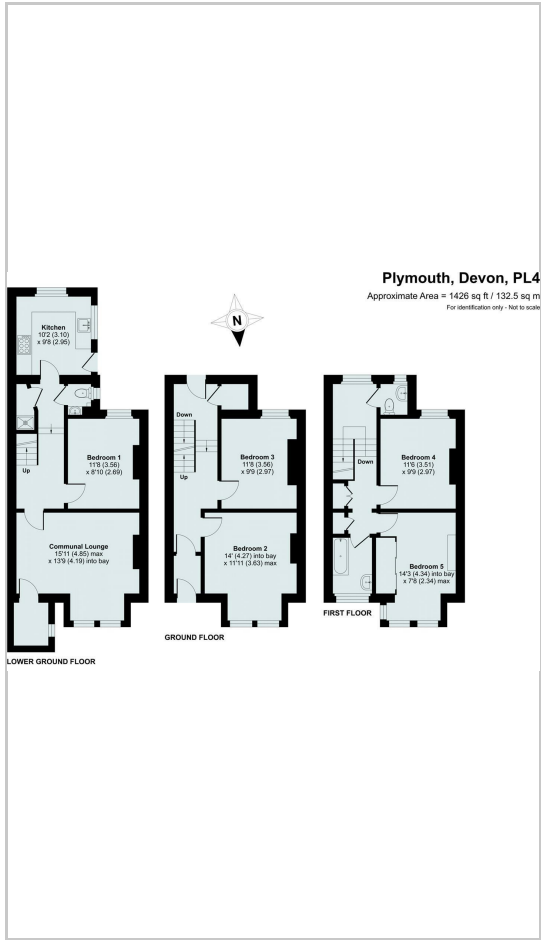
Situated in a central location, this home offers easy access to local amenities, transport links, and the lively atmosphere of Plymouth, making it a desirable choice for tenants. With its excellent condition and strategic positioning, this property is not only a sound investment but also a welcoming environment for its occupants. Whether you are looking to expand your property portfolio or seeking a comfortable living space, this HMO on Ashford Road is a remarkable find.



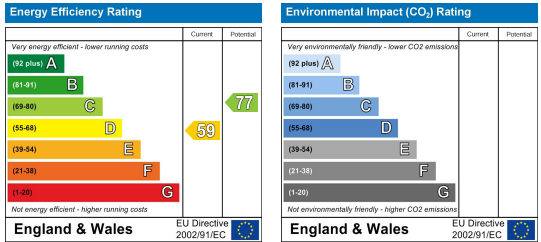
Area Map



Floor Plans



Energy Efficiency Graph



These particulars, whilst believed to be accurate are set out as a general outline only for guidance and do not constitute any part of an offer or contract. Intending purchasers should not rely on them as statements of representation of fact, but must satisfy themselves by inspection or otherwise as to their accuracy. No person in this firm's employment has the authority to make or give any representation or warranty in respect of the property.