

The Ashridge

4-Bedroom Home



Computer generated images are for illustrative purposes only and may be subject to change.

A well proportioned ground floor layout offering a practical balance of living & entertaining space.

The welcoming central hall provides access to a generous living room, and a spacious open plan kitchen dining area with ample room for family meals & social gatherings.

Additional benefits include a useful utility room, WC & cloak room storage adding everyday convenience.

First floor accommodation is centred around a spacious landing leading to four well sized bedrooms ideal for family living.

The master bedroom benefits from an en suite while the remaining bedrooms are served by a contemporary family bathroom.

Additional storage spaces enhances practicality, creating a comfortable & versatile layout suited to modern lifestyles.



Ground Floor

Kitchen/Dining

7.0 x 3.3m

Living

7.0 x 3.3m

WC

0.9 x 1.7m

Cloaks

1.0 x 2.0m

Utility

1.5 x 2.0m

First Floor

Bedroom 1

4.3 x 3.0m

En-Suite

2.0 x 1.6m

Bedroom 2

4.7 x 2.6m

Bedroom 3

3.8 x 3.3m

Bedroom 4

3.7 x 2.2m

Bathroom

1.8 x 1.8m



The Robin

3-Bedroom Home



Computer generated images are for illustrative purposes only and may be subject to change.

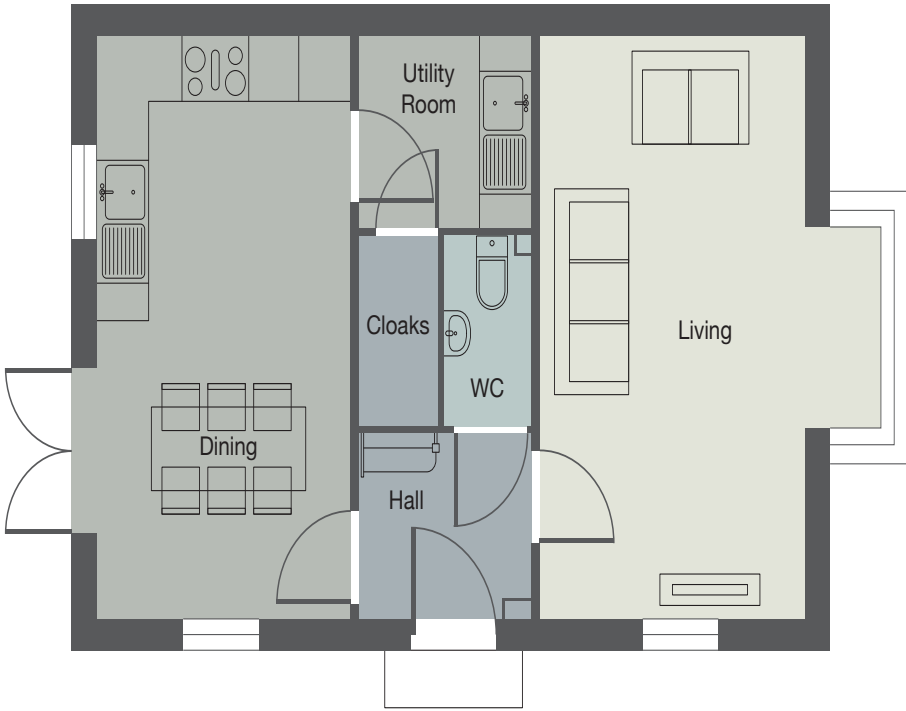
A thoughtfully arranged ground floor to create a seamless blend of comfort and practicality.

A spacious living room offers a relaxing setting for everyday life, while the dining area provides an ideal space for family gatherings.

Complemented by a separate utility room, keeping the main living areas uncluttered, along with a convenient cloakroom and WC. A welcoming hallway ties the space together, delivering a natural flow that enhances both light and usability throughout the home.

An intelligently designed first floor that combines comfort, space, and practicality.

Three well-proportioned bedrooms offer flexible living for families, guests, or home working, with the main bedroom benefiting from a stylish private en-suite. A contemporary family bathroom, additional cloakroom, and central landing enhance everyday convenience, while the efficient layout ensures a natural flow throughout—perfectly suited to modern lifestyles



Ground Floor

Living
3.2 x 5.6m

Kitchen
3.0 x 5.6m

Utility
1.8 x 2.1m

Cloaks
6.0 x 3.2m (20' x 10')

WC
1.8 x 1.0m

First Floor

Bedroom 1
3.4 x 3.0m & 1.5 x 1.1m

En-Suite
1.9 x 1.6m

Bedroom 2
3.4 x 3.0m

Bedroom 3
2.4 x 3.1m

Bathroom
2.1 x 1.7m



The Hawthorne

4-Bedroom Home



Computer generated images are for illustrative purposes only and may be subject to change.

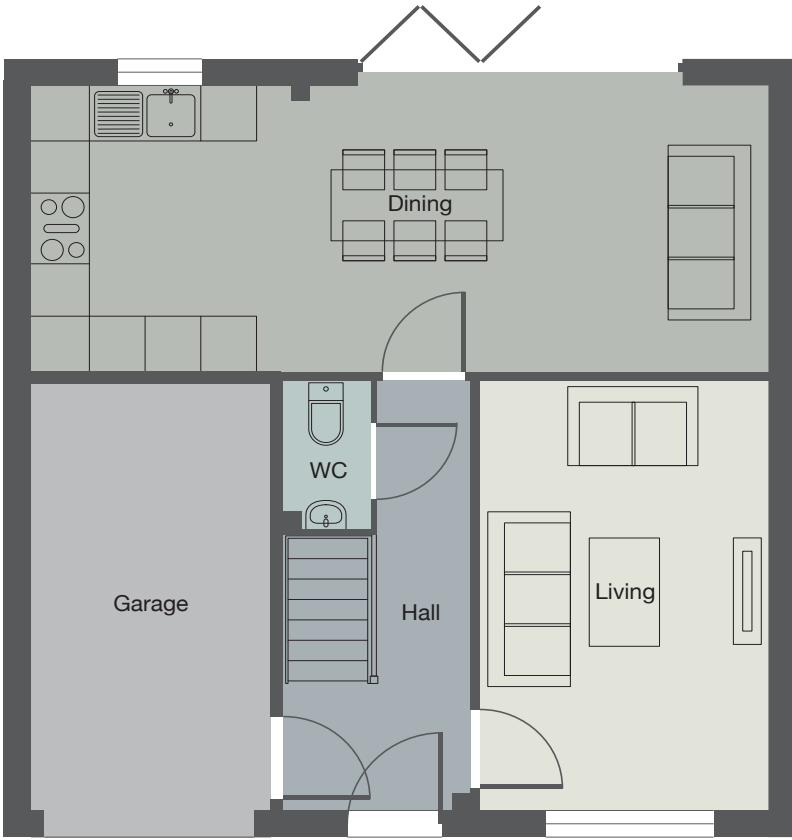
A beautifully arranged ground floor designed with both style and practicality in mind.

A spacious living area provides the perfect place to relax, while a separate dining space offers an ideal setting for entertaining and family meals.

The well-planned layout is complemented by a convenient WC, integral garage, and welcoming hallway, creating a seamless flow throughout—perfect for modern, everyday living.

A generously proportioned first floor that blends space, flexibility, and comfort.

Four spacious bedrooms offer room for family life to grow and adapt, with the main bedroom enjoying its own en-suite. A stylish family bathroom, separate store cupboard, and well-connected central landing enhance everyday ease, while the balanced layout creates a light, flowing space.



Ground Floor

Kitchen/Dining

7.9 x 3.2m

Living

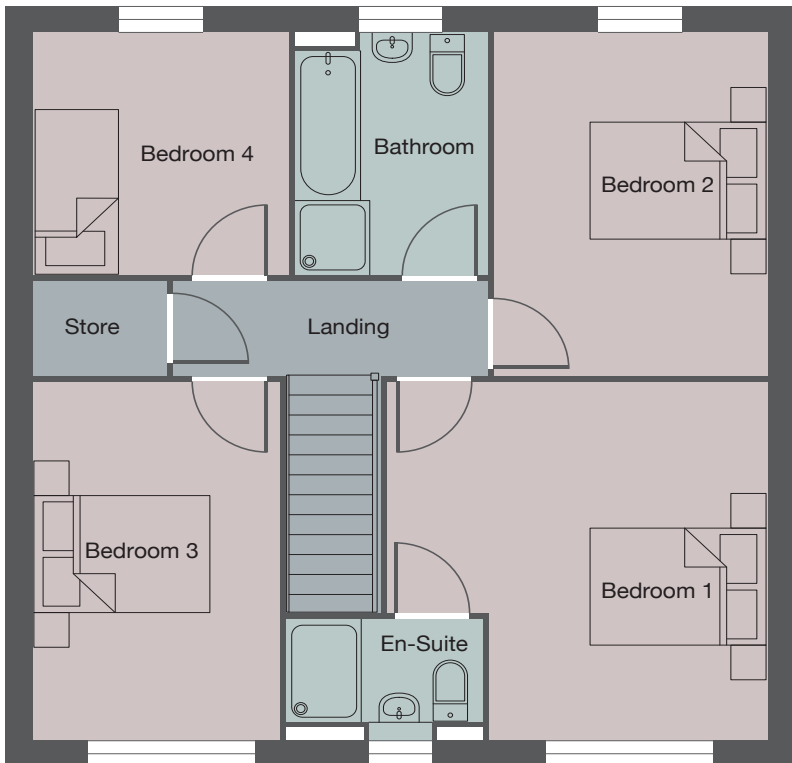
3.1 x 4.8m

WC

1.0 x 1.6m

Garage

2.6 x 4.8m



First Floor

Bedroom 1

4.1 x 4.1m (max)

En-Suite

2.1 x 1.5m

Bedroom 2

4.0 x 3.0m

Bedroom 3

2.6 x 4.1m

Bedroom 4

2.7 x 2.8m

Bathroom

2.1 x 2.8m

Cloaks/Store

1.1 x 1.6m

The Oakridge

4-Bedroom Home



Computer generated images are for illustrative purposes only and may be subject to change.

A bright & spacious living room creates a warm, inviting setting, while the generous kitchen, dining & family area provide the perfect space for family meals & hosting.

A separate home office provides a dedicated area for remote working, or a playroom for the children.

Practical touches such as the utility room & cloakroom keep the home clutter free. Connected by a central hallway that enhances the sense of space & flow throughout.

The first floor of the Oakworth is designed with comfort & flexibility in mind, offering four well proportioned bedrooms to suit growing families & changing needs.

The main bedroom enjoys the luxury of an en-suite while the remaining bedrooms are served by a contemporary family bathroom.

A bright & airy landing connects each space, with additional storage thoughtfully integrated to keep everyday living effortless.



Ground Floor

Kitchen/Dining

5.6 x 3.2m

Family

2.8 x 2.6

Living

3.4 x 4.5m

Utility

1.8 x 2.7m

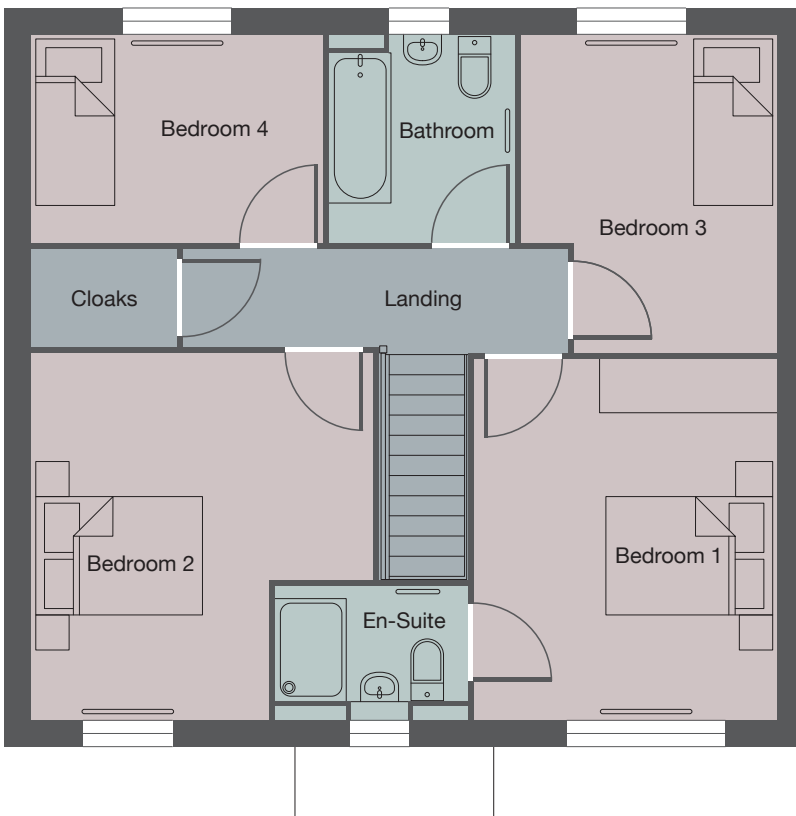
Office

1.7 x 2.7m

WC

1.8 x 1.5m

First Floor



Bedroom 1

3.5 x 4.1m

En-Suite

2.2 x 1.5m

Bedroom 2

3.9 x 2.6 & 2.7 x 1.6m

Bedroom 3

2.9 x 3.6m

Bedroom 4

3.3 x 2.4m

Bathroom

2.1 x 2.4m

Cloaks/Store

1.1 x 1.6m