



STEPHENSON BROWNE

**April Cottage, Waterloo
Road, Haslington**
CW1 5TA



Asking Price £360,000



STEPHENSON BROWNE

DESCRIPTION

April Cottage is exactly what buyers picture when they think of a true village cottage - full of charm, thoughtfully updated, and tucked away in a sought-after location on Waterloo Road in Haslington Village.

Dating back to the 1870s, this delightful three-bedroom home blends character features with modern upgrades, creating a warm and welcoming space that's ready to move straight into. Set behind a quaint picket fence, the property enjoys a lawned front garden and a sense of privacy from the outset, with driveway parking and a spacious detached garage adding practical appeal.

Inside, the accommodation is both versatile and well-presented. The heart of the home is a recently installed, high-spec kitchen, complete with a full range of integrated appliances—ideal for everyday living and entertaining alike. The open-plan living and dining area flows beautifully into a conservatory, creating a bright and sociable space. A contemporary shower room has also been recently fitted to an excellent standard, designed with accessibility in mind.

Upstairs, there are three well-proportioned bedrooms, while additional features such as ample storage and a boarded loft with



ladder and light enhance the home's practicality.

Externally, the property truly comes into its own. The rear garden is completely private and not overlooked, having been recently landscaped to a high standard. It features Indian stone and cobbled pathways, a generous pergola seating area, and a raised section perfect for barbecues and entertaining - offering a secluded retreat for relaxing or hosting guests. In addition, a hidden spot behind the garage provides a peaceful outlook over open fields, a rare and charming bonus.

Perfectly positioned within walking distance of Crewe Golf Club, local shops, amenities, and well-regarded schools, April Cottage also offers excellent convenience for commuters.

A unique opportunity to acquire a characterful home with modern comforts in a desirable village setting.



ROOM DESCRIPTIONS

Entrance Hall

8'7" x 5'4"

Double storage cupboard.

Living / Dining Room

20'4" x 12'4"

Kitchen / Breakfast Room

18'3" x 8'9"

A range of tall and base units with Quartz worksurfaces over. Integrated Siemens appliances - fridge / freezer, dish washer, washing machine, coffee machine, warming drawer, microwave combination oven and single oven. Integrated bins. Breakfast bar with space for three stools. Quooker instant boiling tap. Induction hob with extraction hood above. Pullout larder and carousels.

Conservatory

11'0" x 9'1"

Power and heating.

WC

6'2" x 2'11"

Bedroom One

11'5" x 10'2"

Sliding wardrobes.

Bedroom Two

8'7" x 8'3"

Fitted furniture.

Bedroom Three

12'0" x 8'9"

Fitted furniture.

Shower Room

9'10" x 8'8"

Underfloor heating. DAD rails. Walk-in shower. Vanity sink and WC with storage. LED demist mirror. Heated towel rail.

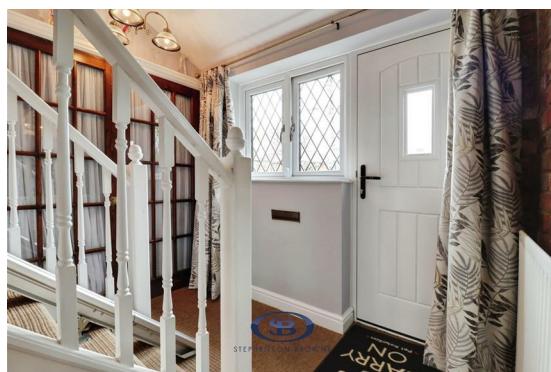
Garage

18'9" x 13'1"

Light, power and pitched storage above.

Tenure

We understand from the vendor that the property is freehold. We would however recommend that your solicitor check the tenure prior to exchange of contracts.

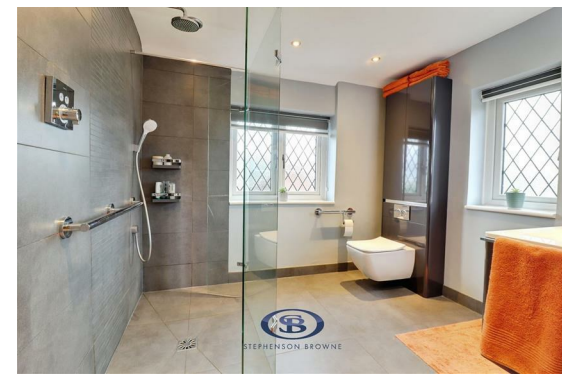


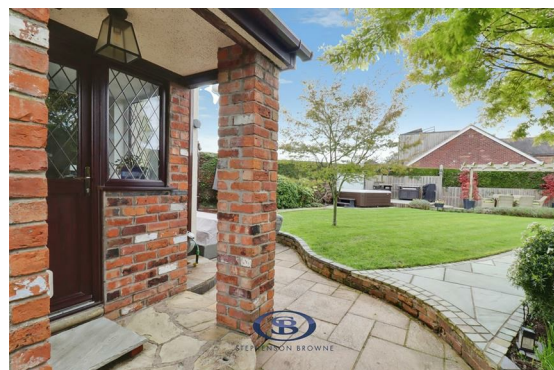
AML Disclosure

Agents are required by law to conduct Anti-Money Laundering checks on all those buying a property. Stephenson Browne charge £49.99 plus VAT for an AML check per purchase transaction. This is a non-refundable fee. The charges cover the cost of obtaining relevant data, any manual checks that are required, and ongoing monitoring. This fee is payable in advance prior to the issuing of a memorandum of sale on the property you are seeking to buy.

Why Choose SB Sandbach To Sell Your Property?

We have been operating in the town for over 15 years, and in recent times have consistently been the market leaders. Our experienced team are dedicated in achieving the best price for you and giving you the best service possible. If you would like a FREE market appraisal, please call us on 01270 763200 opt 1 to arrange a no-obligation appointment.









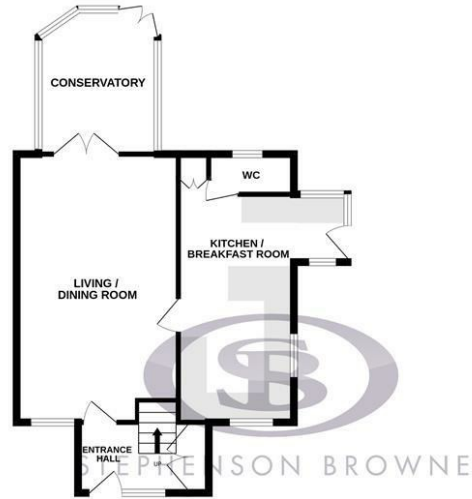
STEPHENSON BROWNE

Viewing

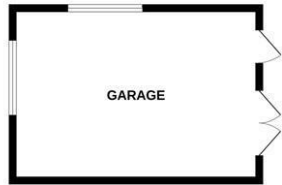
Please contact our office using the details provided below if you are interested in booking a viewing or require further information.

Floorplans

GROUND FLOOR



1ST FLOOR



Whilst every attempt has been made to ensure the accuracy of the floorplan contained here, measurements of doors, windows, rooms and any other items are approximate and no responsibility is taken for any error, omission or mis-statement. This plan is for illustrative purposes only and should be used as such by any prospective purchaser. The services, systems and appliances shown have not been tested and no guarantee as to their operability or efficiency can be given. Made with Metropix ©2026

Area Map



EPC Rating

Energy Efficiency Rating		Environmental Impact (CO ₂) Rating	
	Current	Potential	
Very energy efficient - lower running costs			Very environmentally friendly - lower CO ₂ emissions
(92 plus) A		91	(92 plus) A
(81-91) B			(81-91) B
(69-80) C		79	(69-80) C
(55-68) D			(55-68) D
(39-54) E			(39-54) E
(21-38) F			(21-38) F
(1-20) G			(1-20) G
Not energy efficient - higher running costs			Not environmentally friendly - higher CO ₂ emissions
England & Wales	EU Directive 2002/91/EC		England & Wales
			EU Directive 2002/91/EC

NOTICE: Stephenson Browne for themselves and for the vendors or lessors of this property whose agents they are give notice that: (1) the particulars are set out as a general guideline only for the guidance of intending purchasers or lessees, and do not constitute, nor constitute part of, an offer or contract; (2) all descriptions, dimensions, references to condition and necessary permissions for use and occupation, and other details are given in good faith and are believed to be correct but any intending purchasers or tenants should not rely on them as statements or representations of fact but must satisfy themselves by inspection or otherwise as to the correctness of each theme; (3) no person in the employment of Stephenson Browne has any authority to make representation or warranty whatever in relation to this property. (4) fixtures & fittings are subject to a formal list supplied by the vendors solicitors. **Referring to:** Move with Us Ltd **Average Fee:** £123.64

38 High Street, Sandbach, CW11 1AN

01270 763200

sandbach@stephensonbrowne.co.uk

www.stephensonbrowne.co.uk



STEPHENSON BROWNE