



Tenison Road | | Cambridge | CB1 2DW

£3,150 PCM

COOKE
CURTIS
& CO

Key features

- 1377sqm / 128sqft
- 4 bed, 2.5 bath, 2 recep
- EPC - D / 61
- Council tax band - E
- Gas central heating
- On road permit parking
- Enclosed garden
- Available April 2026

Description

A beautiful, mid terrace period property with four bedrooms and enclosed garden, offering generous living accommodation across three floors. Minutes' walk away from Cambridge train station and the city centre, as well as the local amenities Mill Road has to offer.

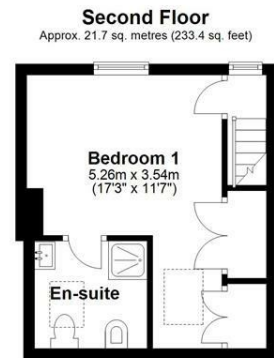
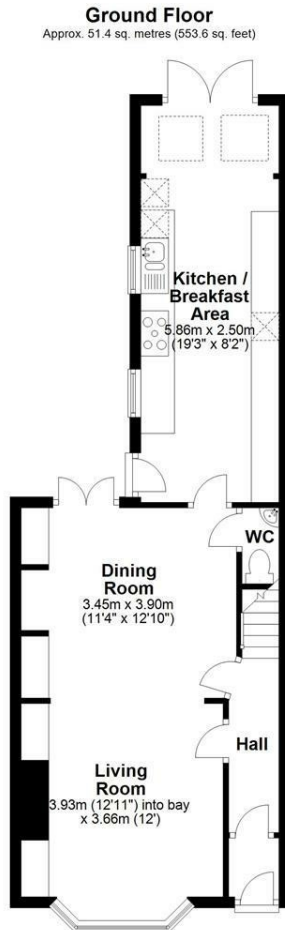
Directions

Tenison Road is located just off Mill Road. The area is one of the most bustling, cosmopolitan and multi-cultural parts of the city. Its main shopping street is packed with colourful, exciting, independent businesses, shops, cafes, restaurants and bars and the surrounding streets have some of the most interesting tucked-away pubs in Cambridge. The area is within easy reach of Cambridge's historic centre, major shops and green spaces. Everything you need is just a bike ride or walk away, from schools to supermarkets, gyms to art galleries and the city's main central station is just a few minutes walk



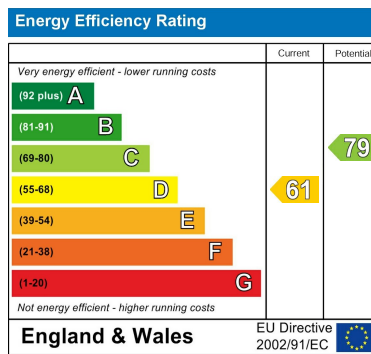


Floor plans



Total area: approx. 121.1 sq. metres (1303.7 sq. feet)

Drawings are for guidance only
Plan produced using PlanUp.



Council Tax Band **E** EPC Rating **D**

**COOKE
CURTIS
& CO**

40 High Street
Trumpington
Cambridge
Cambridgeshire
CB2 9LS
01223 508050

hello@cookecurtis.co.uk
cookecurtis.co.uk