

EADON  
LOCKWOOD  
& RIDDLE  
ESTD 1840

4 Mackenzie Crescent

Sheffield, S10 2BU

Asking Price £550,000



# 4 Mackenzie Crescent



## Description

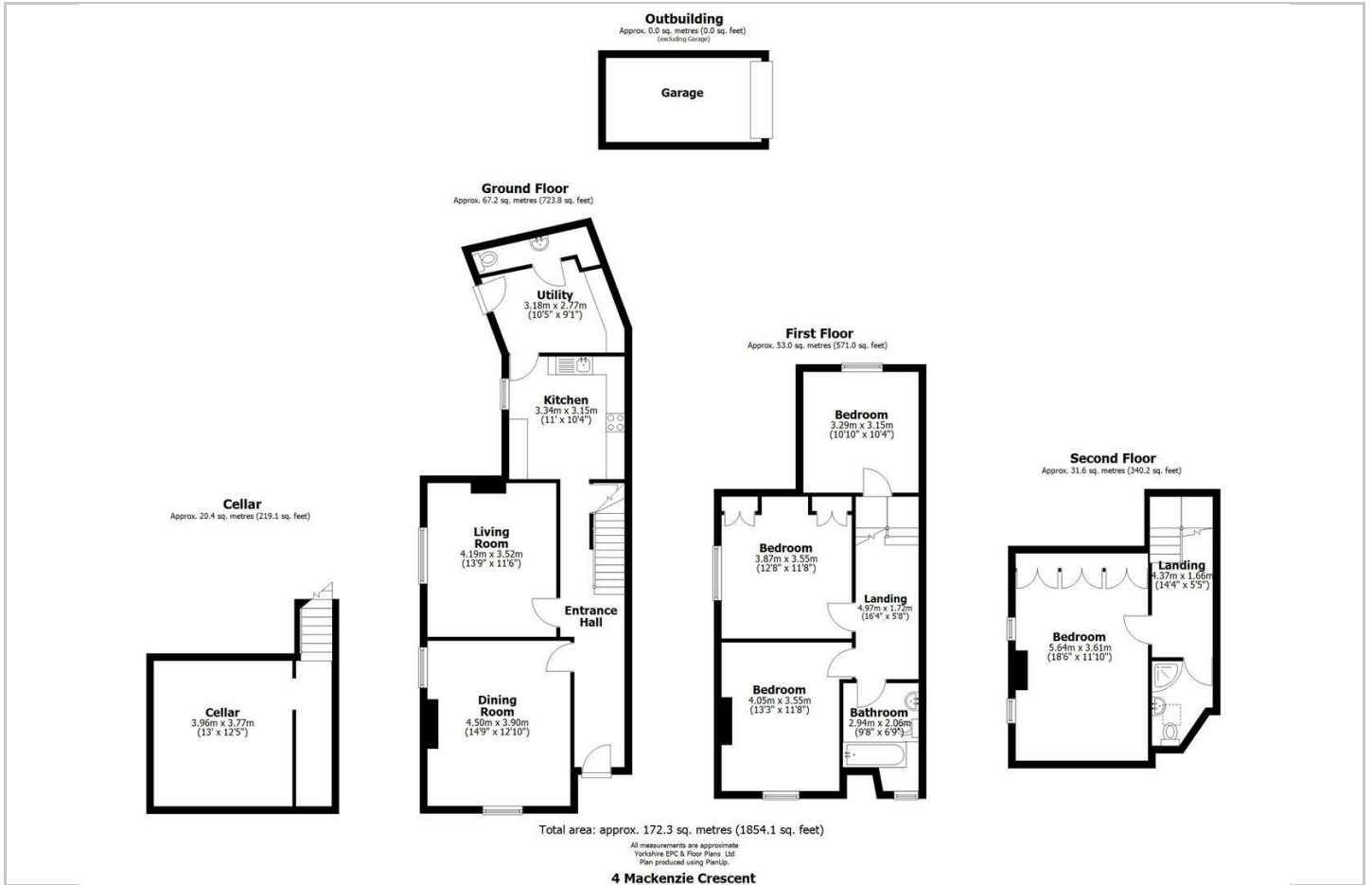
An attractive Victorian property with over 1854 square feet of accommodation laid out over three floors, having gardens to three sides and secure gated parking to the rear. The location, at the end of a quiet cul de sac, is an attractive feature of this pretty home and the fact that it is being sold with no onward chain is even better! Located in a great school catchment and within easy access of the main city hospitals, universities and the bright lights of Ecclesall Road this attractively priced home is well worth a look!

- Four good double bedrooms, two with fitted wardrobes.
- Sitting room with a wood burning stove and offering versatility in the way the room can be used.
- Utility room and separate ground floor shower room/W.C.
- Gated parking to the rear for at least two vehicles/
- Freehold, no chain and Council Tax Band D.
- Dining room with a dual aspect and a wood burning stove.
- Pretty kitchen with attractive stone flags to the floor, modern units and work surfaces.
- Two bath/shower rooms including modern fixtures and fittings and elegant tiling.
- Sunny, south facing gardens to the front, side and rear.
- Gas central heating and double glazing combine to produce an EPC rating of D66.





# Floor Plan



# Area Map



# Viewing

Please contact our ELR Banner Cross Office on 0114 268 3388 if you wish to arrange a viewing appointment for this property or require further information.

These particulars, whilst believed to be accurate are set out as a general outline only for guidance and do not constitute any part of an offer or contract. Intending purchasers should not rely on them as statements of representation of fact, but must satisfy themselves by inspection or otherwise as to their accuracy. No person in this firm's employment has the authority to make or give any representation or warranty in respect of the property.

Eadon Lockwood and Riddle, 888 Ecclesall Road, Sheffield, South Yorkshire, S11 8TP  
Tel: 0114 268 3388 Email: [bannercross@elr.co.uk](mailto:bannercross@elr.co.uk) <https://www.elr.co.uk>

# Energy Efficiency Graph

