



16, Church Close, Bicton, Shrewsbury, SY3 8EN
£1,500 Per Month



16, Church Close, Bicton, Shrewsbury, SY3 8EN

£1,500 Per Month

This impressive and versatile four bedroom detached house has been stylishly improved and extended to provide fantastic accommodation, including large open plan living space with bi-folding doors to the garden. The property is well-situated at the end of a quiet and private cul-de-sac within the popular village of Bicton, right next to the local park, a short walk from the primary school and just a 10-minute drive from Shrewsbury town centre.

Available from: 28/05/26

Description

Comprising: good sized living room with feature fireplace and window to front, superb open plan kitchen/family/dining room with under floor heating, vaulted ceiling, velux roof lights and bi-folding doors opening to the rear garden, a range of well-fitted and modern units to the kitchen area, complete with island unit and breakfast bar, integrated appliances (double oven and fridge/freezer), quartz work surfaces and island unit/breakfast bar, large separate utility, also having fitted units with access to the integral garage, two ground floor double bedrooms and a shower room which can be accessed via both the entrance hall and one of the bedrooms. Stairs to first floor, two further double bedrooms, a family bathroom with door connecting to master bedroom. uPVC double glazed windows and oil fired central heating. Private landscaped rear garden, laid to lawn with paved terraces, planted borders and large timber store. Driveway to front providing plenty of parking and access to the garage. EPC E.



Unfurnished

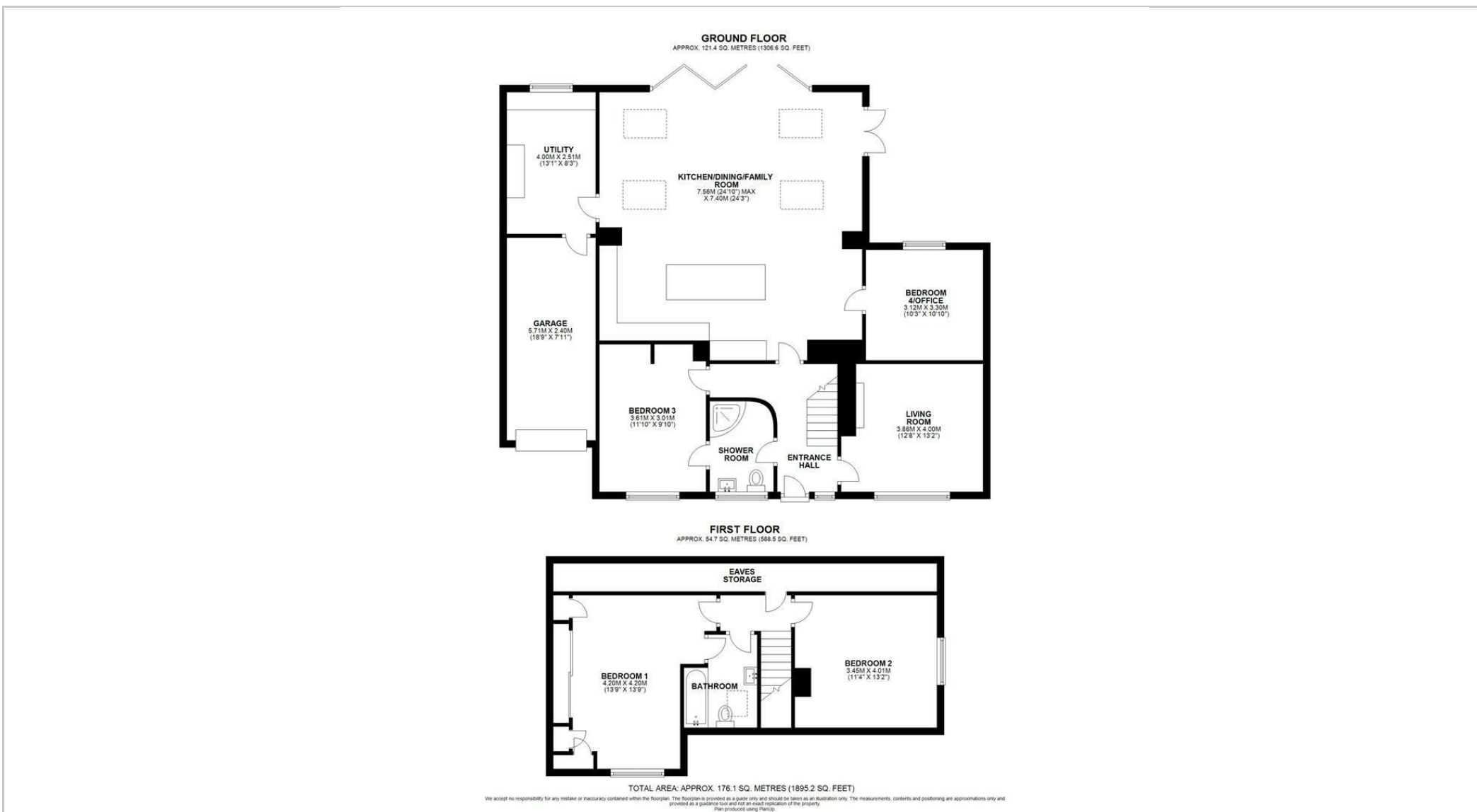
Council Tax Band: D

Available: 28th May 2026

EPC: E



Floor Plans



These particulars, whilst believed to be accurate are set out as a general outline only for guidance and do not constitute any part of an offer or contract. Intending purchasers should not rely on them as statements of representation of fact, but must satisfy themselves by inspection or otherwise as to their accuracy. No person in this firm's employment has the authority to make or give any representation or warranty in respect of the property.