



Pathfield Road, SW16

£525,000

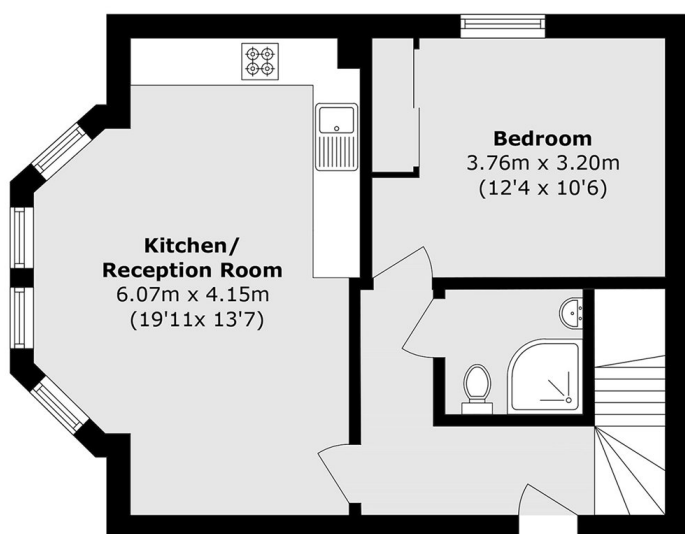
OFFER OVER This spacious split-level property offers over 870 sq ft of well-presented accommodation and is available with no onward chain. The property comprises three generously proportioned double bedrooms, offering flexible living arrangements for families, professional sharers or those requiring home-working space. The heart of the home is the bright open-plan living and kitchen area, thoughtfully designed for modern living and ideal for entertaining.

Pathfield Road is ideally located within walking distance of both Streatham Common and Streatham stations, offering direct links to London Victoria, London Bridge and Blackfriars. Streatham High Road is also close by, providing a wide range of transport connections, shops, restaurants and leisure amenities. The open green spaces of Streatham Common are nearby, including the popular Rookery gardens, perfect for relaxing walks at the weekend.

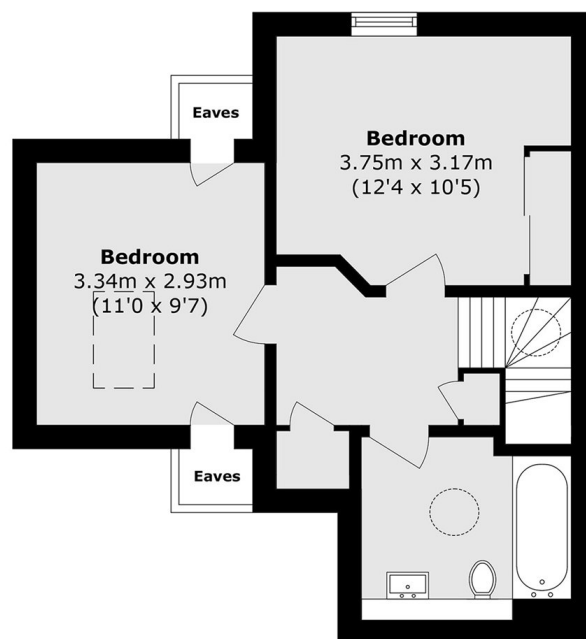
Features

- Three Double Bedrooms
- Long Lease
- Shared Garden
- Split Level
- Two Bathrooms
- Bike Storage

Pathfield Road, London, SW16



Second Floor



Third Floor

Total area (approx.): 81.5 sq. m (877.3 sq. ft)
(Excluding Eaves)