



Tyrwhitt Road, SE4 £325,000

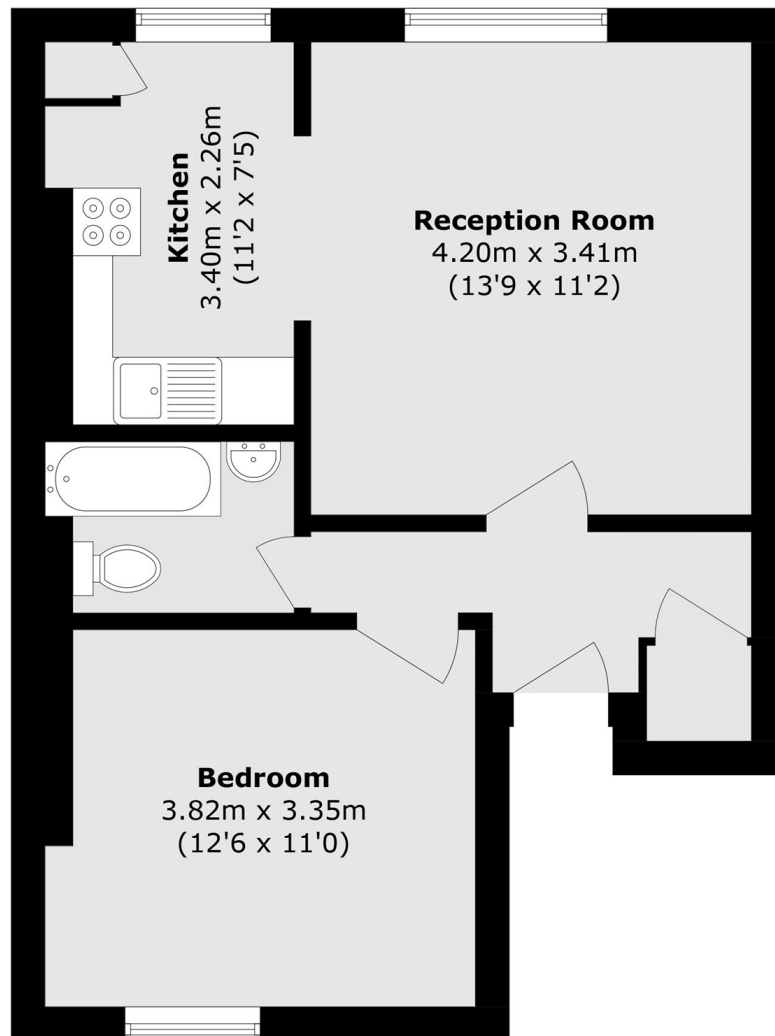
A bright one double bedroom top floor Victorian conversion, located in the Conservation area moments from Hilly Fields Park. Benefitting from a generous size reception kitchen room and lovingly kept throughout.

Tyrwhitt Road is a sought after road located in the Brockley Conservation area with excellent transport links from Brockley, Ladywell, Crofton Park and St. Johns stations all within easy reach.

Features

- Double Bedroom
- Victorian Conversion
- Open Plan Kitchen/Living
- Brockley Conservation
- Close To Amenities
- Close To Hilly Fields Park

Tyrwhitt Road,
LONDON, SE4



Total area (approx.): 44.4 sq. m (477.9 sq. ft)