



PALACE GARDENS TERRACE, W8

£992 per week

Two Bedrooms
Two Bathrooms
High Ceilings
First Floor Flat
Modern
Prime Kensington location

@marshandparsons
marshandparsons.co.uk

MARSH &
PARSONS



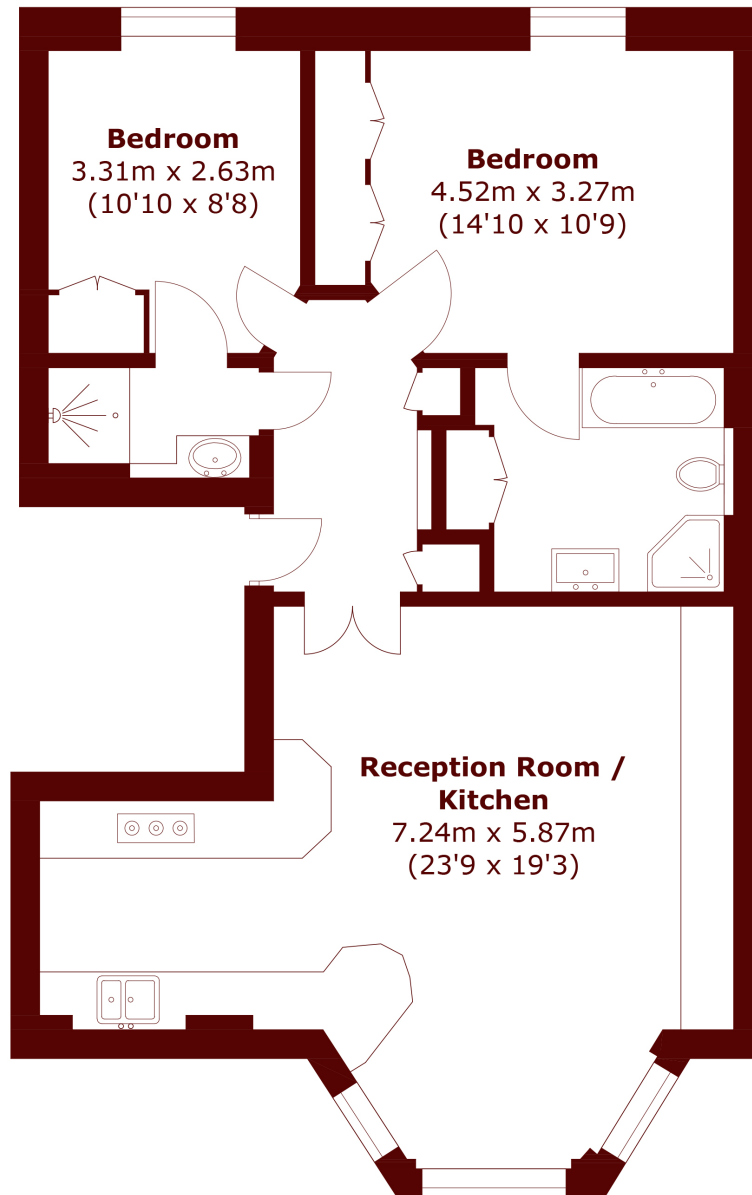
ABOUT THE PROPERTY

The apartment is located on the first floor of this white stucco fronted building. There are two double bedrooms, both with en suite bathrooms, a large semi open-plan kitchen and reception room. The apartment has been finished to an excellent standard with lovely high ceilings throughout.

Palace Gardens Terrace is an elegant cherry tree lined street located just off Kensington Church Street, which offers a wide variety of shops and restaurants, while Kensington High Street, Notting Hill and the green spaces of Kensington Gardens and Hyde Park are all located close by. High Street Kensington (District and Circle lines) and Notting Hill Gate (Central, Circle and



STEP INSIDE PALACE GARDENS TERRACE



Total area (approx.): 69.7 sq. m (750.2 sq. ft)

Kensington
020 7368 4460

Energy Rating: We aim to make our particulars both accurate and reliable. However, they are not guaranteed; nor do they form part of an offer or contract. If you require clarification on any points then please contact us, especially if you're traveling some distance to view. Please note that appliances and heating systems have not been tested and therefore no warranties can be given as to their good working order

**MARSH &
PARSONS**