



Deverill Court, Avenue Road, London, SE20 7RZ Offers in excess of £175,000

**** CASH BUYERS ONLY ** SHARE OF FREEHOLD**

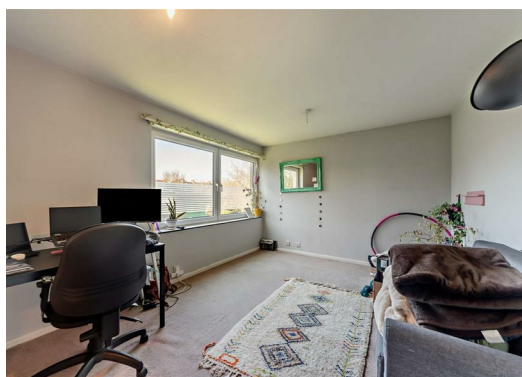
Good Move are delighted to present this one bedroom apartment to the market with no onward chain.

Accommodation briefly comprises a hall leading to the family bathroom and w.c, the following to a double bedroom, ample sized reception room, and large kitchen.

The property is conveniently located within a short walk of Kent House railway station offering swift access into Central London. Nearby Beckenham offers a vibrant high street with a great selection of cafés, independent shops, and restaurants. The area also benefits well-regarded schools and attractive open spaces, making it an ideal location for both convenience and lifestyle.

The property has been attractively priced and we invite all buyers in a position to proceed to view.

Please call for more information.



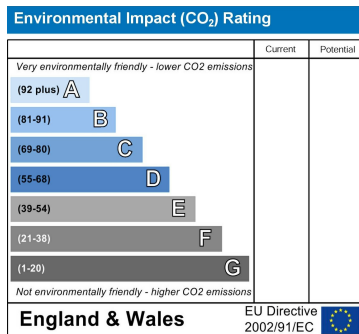
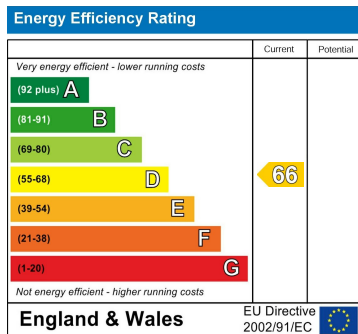
Leasehold Information

Share of freehold
 956 years remaining on the lease
 Ground rent: £0 per annum
 Maintenance charge: £4356 per annum

This information is provided by the vendor and should be verified during the conveyancing process.

Disclaimer

- 1. MONEY LAUNDERING REGULATIONS:** Intending purchasers will be asked to produce identification documentation at a later stage and we would ask for your co-operation in order that there will be no delay in agreeing the sale.
- 2. General:** While we endeavour to make our sales particulars fair, accurate and reliable, they are only a general guide to the property and, accordingly, if there is any point which is of particular importance to you, please contact the office and we will be pleased to check the position for you, especially if you are contemplating travelling some distance to view the property.
- 3. Measurements:** These approximate room sizes are only intended as general guidance. You must verify the dimensions carefully before ordering carpets or any built-in furniture.
- 4. Services:** Please note we have not tested the services or any of the equipment or appliances in this property, accordingly we strongly advise prospective buyers to commission their own survey or service reports before finalising their offer to purchase.
- 5. THESE PARTICULARS ARE ISSUED IN GOOD FAITH BUT DO NOT CONSTITUTE REPRESENTATIONS OF FACT OR FORM PART OF ANY OFFER OR CONTRACT. THE MATTERS REFERRED TO IN THESE PARTICULARS SHOULD BE INDEPENDENTLY VERIFIED BY PROSPECTIVE BUYERS OR TENANTS. NEITHER GOODMOVE NOR ANY OF ITS EMPLOYEES OR AGENTS HAS ANY AUTHORITY TO MAKE OR GIVE ANY REPRESENTATION OR WARRANTY WHATEVER IN RELATION TO THIS PROPERTY.**



Ground Floor 4320 Park Approach, Thorpe Park, Leeds, LS15 8GB

Tel: 0113 892 1166

sales@goodmove.co.uk

www.goodmove.co.uk