



**ALDERNEY STREET**  
PIMLICO

**JACKSON-STOPS** 

---

## ALDERNEY STREET PIMLICO, SW1V

ASKING PRICE: £3,500 PCM

A bright and spacious two-bedroom raised ground floor flat in the heart of the Pimlico Grid, featuring high ceilings, large windows, and a lot of natural light throughout.

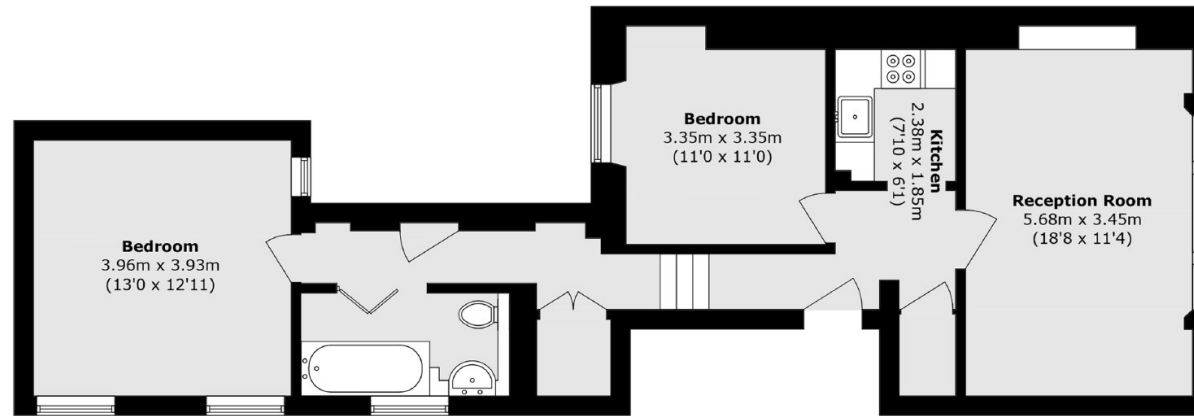
Just 0.5 miles from Pimlico Underground Station, 0.4 miles from Victoria Station, 0.7 miles from Sloane Square Station and 0.7 miles from Battersea Park.

### KEY FEATURES

- Two Bedrooms
- Bathroom
- Kitchen
- Reception
- Furnished
- Tax Band F







Total area (approx.): 73.5 sq. m (791.1 sq. ft)

Energy Rating: C. We aim to make our particulars both accurate and reliable. However they are not guaranteed; nor do they form part of an offer or contract. If you require clarification on any points then please contact us, especially if you are travelling some distance to view. Please note that appliances and heating systems have not been tested and therefore no warranties can be given as to their good working order.

**ASKING PRICE: £3,500 PCM**

**PIMLICO**

**020 7828 4243**

[pimlicolettings@jackson-stops.com](mailto:pimlicolettings@jackson-stops.com)

[jackson-stops.co.uk](http://jackson-stops.co.uk)

**JACKSON-STOPS** 