



A RARE SOUTH KENSINGTON APARTMENT WITH ONE OF THE AREA'S MOST IMPRESSIVE PRIVATE GARDENS

Rarely available in South Kensington, this superb two-bedroom, two-bathroom apartment features an exceptionally large private garden, detached garden studio/home office, private terrace and access to beautifully maintained communal gardens.

Private Garden | Detached Garden Studio | Share of Freehold | Two Bathrooms | Roof Terrace | Communal Gardens | Gloucester Road | Prime South Kensington

A rare offering in SW5, combining generous accommodation with exceptional outdoor space seldom found in Prime Central London.

Please note that images may include virtual staging for illustrative purposes.





ACCOMMODATION

Two Bedrooms: Two Bathrooms: Reception Room: Kitchen: Roof Terrace: Garden
Studio/Home Office/Creative Space: Exceptionally Large Private Garden

LOCATION

Gledhow Gardens enjoys an enviable position in the heart of South Kensington, one of London's most prestigious and well-connected neighbourhoods. Moments from the vibrant amenities of Gloucester Road and Earls Court, residents benefit from an excellent selection of cafés, restaurants, boutiques and everyday conveniences. The area is renowned for its cultural landmarks, with the Natural History Museum, V&A and Science Museum all within easy reach, along with the open green spaces of Hyde Park and Kensington Gardens. Outstanding transport links from Gloucester Road and Earl's Court Underground stations (District, Circle and Piccadilly lines) provide swift access to the West End, the City and Heathrow Airport. Combining elegant garden-square living with exceptional connectivity and lifestyle appeal, this is prime South Kensington at its finest.





RARELY AVAILABLE – VIEWING HIGHLY RECOMMENDED

PROPERTY INFORMATION

Property Type: Flat/Apartment

Construction Materials: Brick

Utilities:

Electricity supply: Mains Supply

Water supply: Mains

Sewerage: Mains

Heating: Gas

Broadband/ Internet connection: Fttc

Mobile Signal Coverage: Please check Ofcom

Mobile Checker

Broadband speed: Please check Ofcom

Broadband Checker

Parking Arrangements: Street Parking Permit
Required

Terms

Price: £1,200,000

Tenure: Share of freehold

Lease: XXX years from 0X/0X/X000

Local Authority: Royal Borough of Kensington & Chelsea

Service Charge: £2,494 per annum approx tbc

Ground Rent: Peppercorn

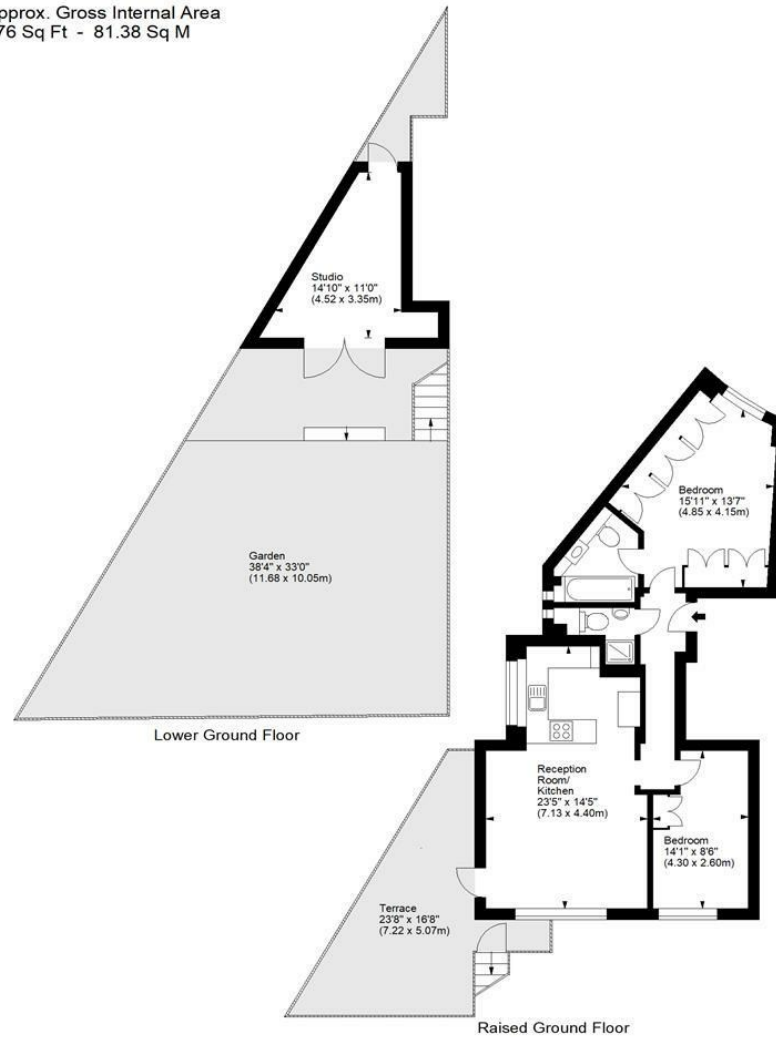
Ground Rent Review Period: n/a

Council Tax Band: G + Garden Square Supplement

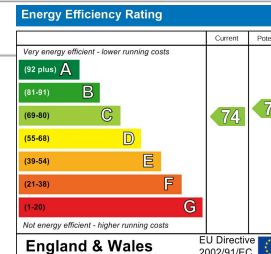
Gledhow Gardens, SW5



Approx. Gross Internal Area
876 Sq Ft - 81.38 Sq M



For illustration purposes only. Not to scale.
All measurements are taken and shown at floor level.
www.r3photography.co.uk © Photography / Floor Plans / Lease Plans / EPCs



FEATURES

- Huge private garden – exceptionally rare in South Kensington
- Detached garden studio/home office
- Prime SW5 garden square address
- Share of Freehold
- Private terrace plus communal gardens
- Two double bedrooms, two bathrooms
- Superb entertaining space opening onto the garden
- Rare lifestyle property in one of London's most desirable postcodes
- Moments from Gloucester Road, South Kensington & Earl's Court stations
- Unique lifestyle property with over 875 sq ft of accommodation



0207 370 4343

www.whiteestates.com

sk@white-estates.co.uk

176 Old Brompton Road, London, SW5 0BA