



OAKFIELD



Claremont Rise, Uckfield, TN22 2AH

Price Guide £575,000



## Claremont Rise, Uckfield, TN22 2AH

Price Guide £575,000 - £600,000.

Tucked away in a quiet cul-de-sac, this charming detached family home offers a rare combination of privacy, character, and convenience. Believed to date back to the 1960s, the property forms part of a close of individually designed houses, creating a sense of uniqueness and community.

Beautifully presented throughout, the home has been thoughtfully updated and extended by the current owner. The ground floor features a welcoming entrance hall leading to a spacious double-aspect sitting room with a bay window, feature fireplace, and double doors opening into a stylish orangery. Flooded with natural light, the orangery provides a seamless connection to the rear garden and creates an ideal space for year-round relaxation.

The bay-fronted dining room offers a perfect setting for entertaining, while the contemporary kitchen boasts integrated appliances and an excellent range of storage. A side extension has added a practical utility room and a useful downstairs cloakroom.

Upstairs, there are three well-proportioned bedrooms. The master bedroom benefits from a modern en-suite shower room, and the remaining bedrooms are served by a family bathroom. The third bedroom has been extended to provide a generous space, ideal for children or guests.

The gardens are a true highlight of this property. Beautifully landscaped with mature planting, trees, and hedging, they offer excellent privacy and seclusion. A large paved terrace provides a perfect spot for alfresco dining or summer entertaining. The property also includes a driveway leading to a detached single garage.

Quiet yet conveniently positioned, this delightful home is within easy reach of Uckfield town centre and a variety of woodland walks—offering the perfect balance between countryside living and everyday amenities.





### Conservatory

12'0 x 10'1 (3.66m x 3.07m )

### Sitting Room

19'4 x 12'4 (5.89m x 3.76m )

### Kitchen/ Dining Room

19'7 x 12'3 (5.97m x 3.73m )

### Bedroom

14'2 x 12'3 (4.32m x 3.73m )

### Bedroom

16'3 x 9'1 (4.95m x 2.77m )

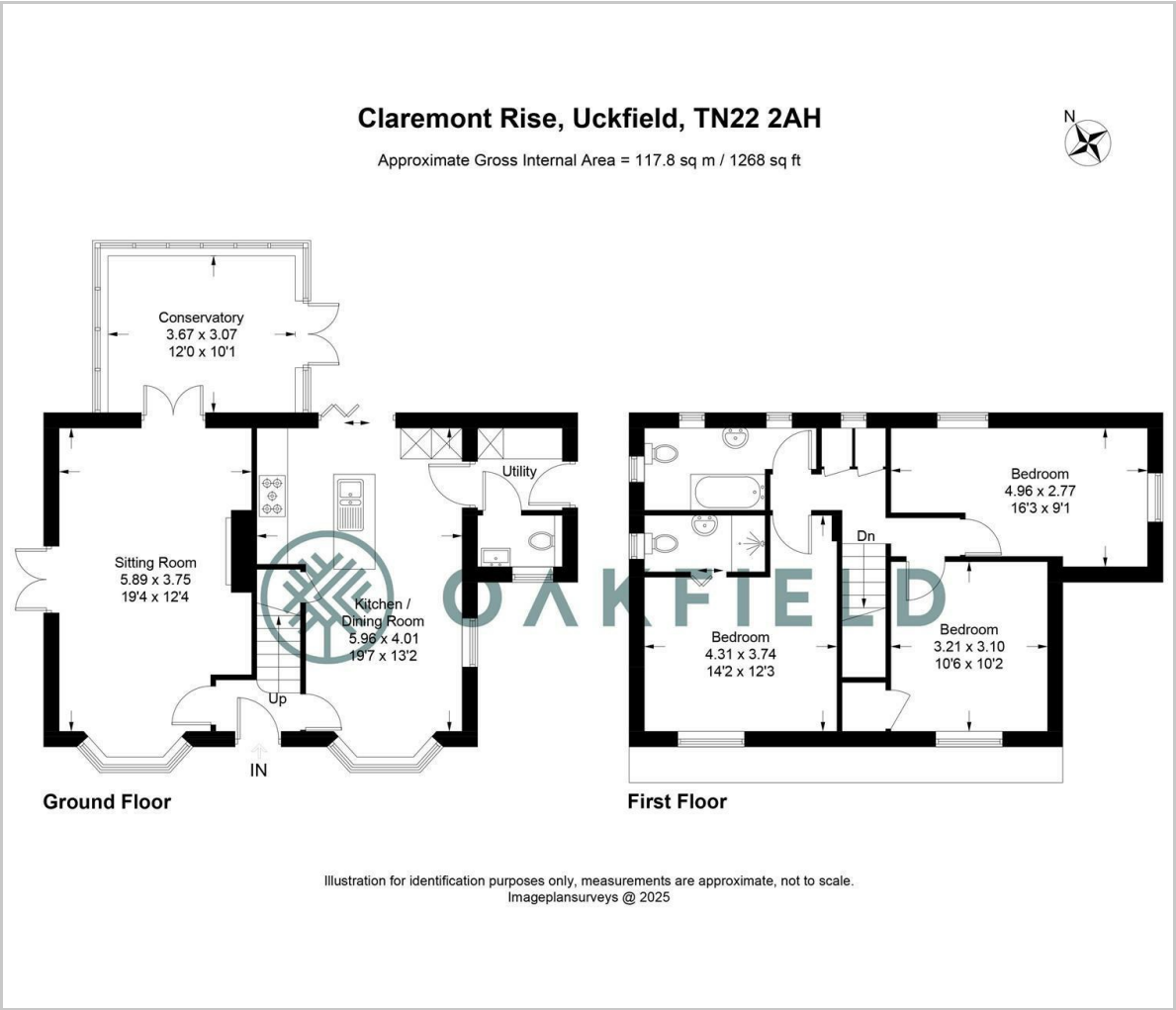
### Bedroom

10'6 x 10'2 (3.20m x 3.10m)

**Council Tax Band- E - £3188**



Floor Plan

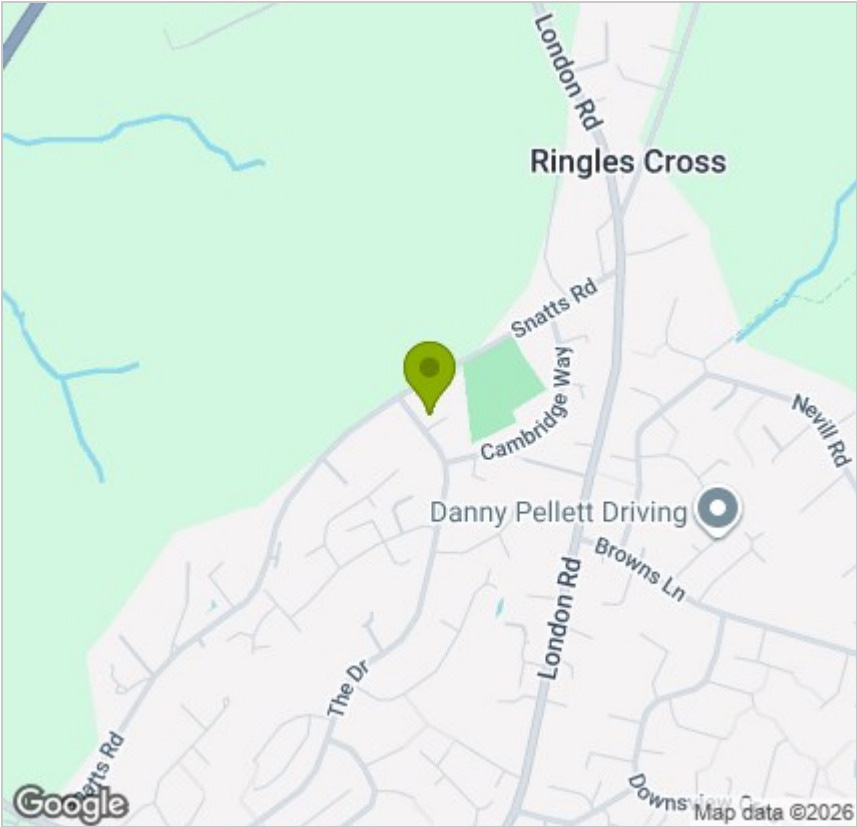


Viewing

Please contact us on 01825 762132  
if you wish to arrange a viewing appointment for this property or require further information.

These particulars, whilst believed to be accurate are set out as a general outline only for guidance and do not constitute any part of an offer or contract. Intending purchasers should not rely on them as statements of representation of fact, but must satisfy themselves by inspection or otherwise as to their accuracy. No person in this firms employment has the authority to make or give any representation or warranty in respect of the property.

Area Map



Energy Efficiency Graph

