



Redcliffe Gardens, SW10

£1,075,000

A rarely available and elegant first floor apartment set within a magnificent Victorian villa, discreetly positioned back from the street. This impressive residence showcases classic period grandeur, with 3 meter ceilings, beautiful bay windows and exquisite parquet wood flooring throughout.

Redcliffe Gardens is a popular road ideally located between the Redcliffe Square gardens and Earls Court Road. It is close to the shops and restaurants on Earls Court Road and Earls Court underground station is nearby.

Features

- First Floor Apartment
- Share Of Freehold
- No Ongoing Chain
- Two Double Bedrooms
- Abundance Of Natural Light
- High Ceilings



Redcliffe Gardens, SW10

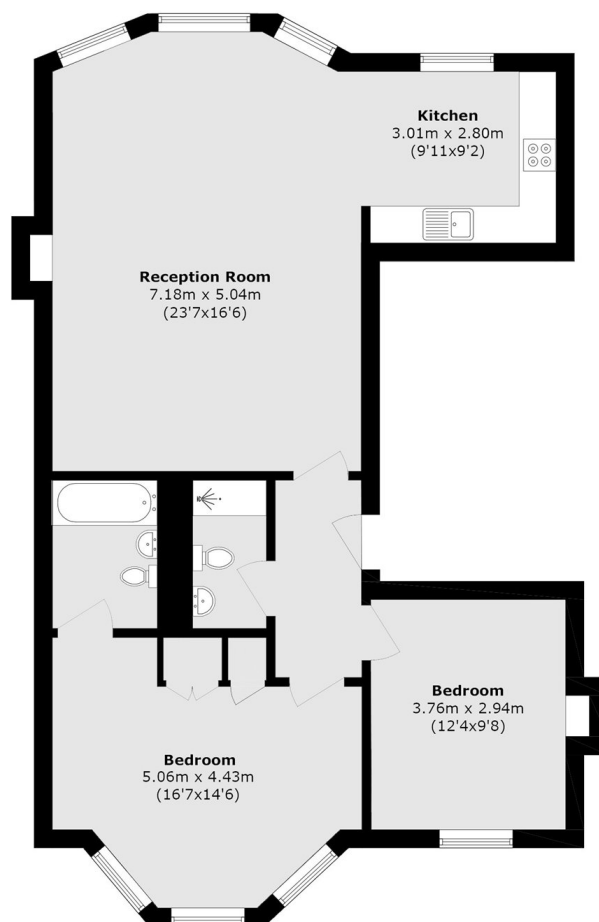
Extending to nearly 1,000 Sq. Ft, the apartment offers bright and generously proportioned accommodation, presented in excellent condition and rich in original period detail.

The substantial living and reception room provides an exceptional space for entertaining, seamlessly incorporating a well-appointed kitchen, and opening directly onto a private balcony.

The property further benefits from two spacious double bedrooms and two bathrooms, making it ideal for both comfortable living and hosting guests. A truly distinguished home that blends timeless Victorian elegance with modern-day living, offering scale, light and sophistication in a highly desirable setting.



Redcliffe Gardens, London, SW10



First Floor

Total area (approx.): 90.1 sq. m (969.8 sq. ft)