



CLIVEPEARCE
Now you're moving

3 Bedrooms
House - Semi-
Detached
Located in Truro

£435,000



hello@clivepearceproperty.com

www.clivepearceproperty.com

01872 272622



Kenwyn Road

Truro | | TR1 3SX



Contemporary and stylish throughout, a totally remodelled family home located in a desirable city address, with private driveway parking and large and established gardens.

Kenwyn Road

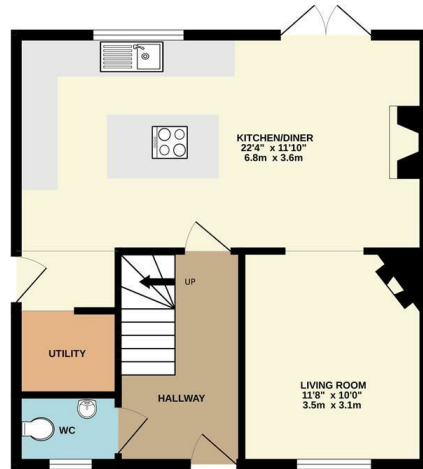
£435,000 Freehold



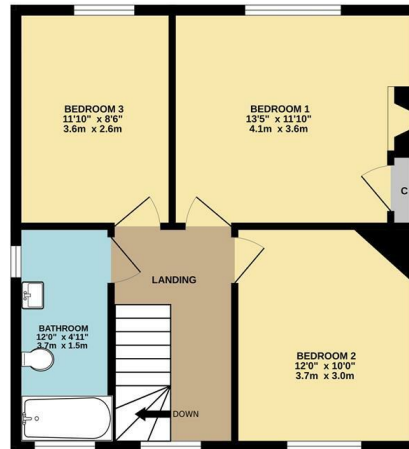
- Stunningly presented and much improved family home
- Remodelled kitchen, cloakroom/wc and shower room suites
- Wonderful feeling of warmth, light and space
- Large and established garden plot
- Close to popular school and Idless woods
- Particularly sought after city address
- Designed for open plan modern living
- Private driveway parking
- Gas central heating and double glazing



GROUND FLOOR
510 sq.ft. (47.4 sq.m.) approx.



1ST FLOOR
513 sq.ft. (47.7 sq.m.) approx.



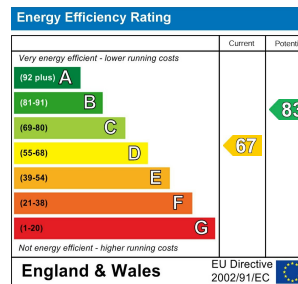
TOTAL FLOOR AREA : 1023 sq.ft. (95.1 sq.m.) approx.

Whilst every attempt has been made to ensure the accuracy of the floorplan contained here, measurements of doors, windows, rooms and any other items are approximate and no responsibility is taken for any error, omission or mis-statement. This plan is for illustrative purposes only and should be used as such by any prospective purchaser. The services, systems and appliances shown have not been tested and no guarantee as to their operability or efficiency can be given.
Made with Metropix ©2025

Council Tax Band: C

Local Authority:

Agents Note: Whilst every care has been taken to prepare these particulars, they are for guidance purposes only. All measurements are approximate and are for general guidance purposes only and whilst every care has been taken to ensure their accuracy, they should not be relied upon and potential buyers/tenants are advised to recheck the measurements.



CLIVEPEARCE
Now you're moving

31 Lemon Street
Truro
Cornwall
TR1 2LS

01872 272622

hello@clivepearceproperty.com

www.clivepearceproperty.com