



Rosebery Avenue, EC1R
£1,300,000

Dexters



Rosebery Avenue, EC1R

A two bedroom apartment in the historic former headquarters of Thames Water. Situated over the top two floors of this impressive Grade II listed building, the property benefits from manicured communal grounds, a concierge, board room and communal gym. This home is a must view!

New River Head is located in the heart of London's Clerkenwell neighbourhood, with Angel Station on the Northern Line just 0.3 miles away and the vibrant Exmouth Market with its bars and restaurants even closer. Additionally, both the City and West End are within easy reach.

Features

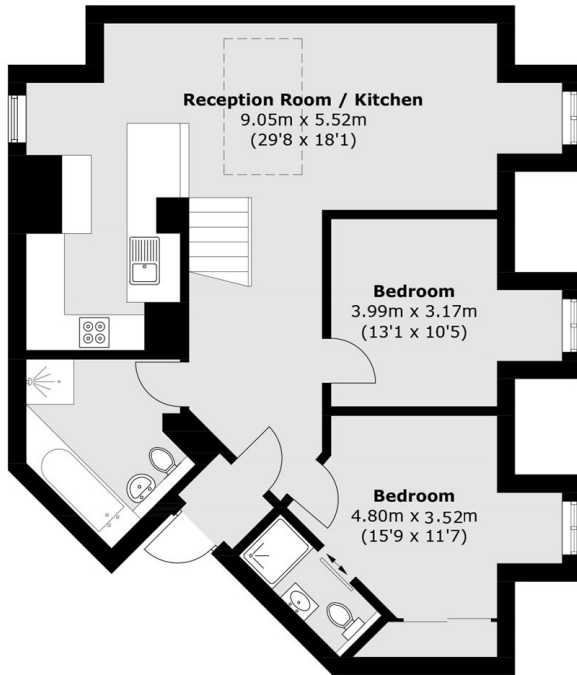
- Grade II Listed
- Private Rooftop Terrace
- Manicured Gardens
- Board Room
- Concierge
- Communal Gym



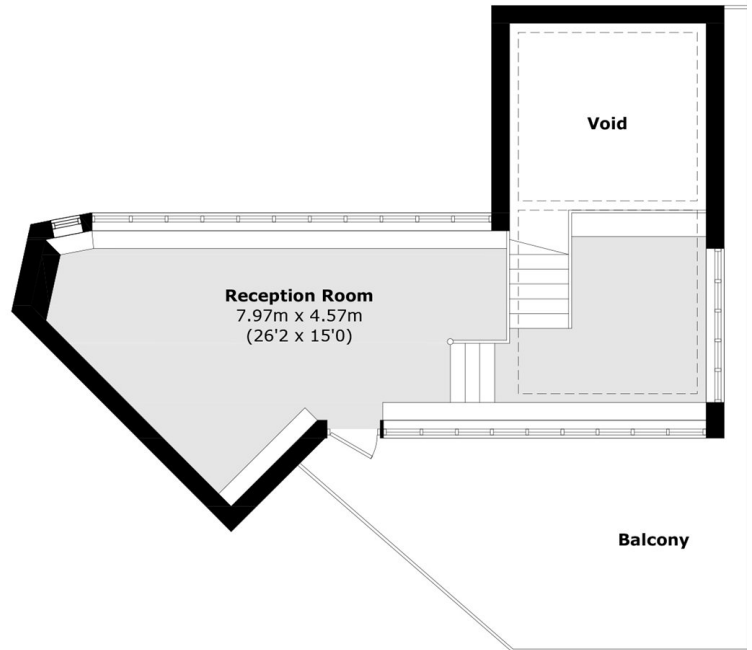




Rosebery Avenue, London, EC1R



Fourth Floor



Fifth Floor

Total area (approx.): 114.7 sq. m (1,234.6 sq. ft)
(Excluding Void)

Balcony: 31.2 sq. m (335.8 sq. ft)