



Hanbury Road, Brownhills
Walsall, WS8 7PB

Guide Price £200,000

Brownhills

Guide Price £200,000

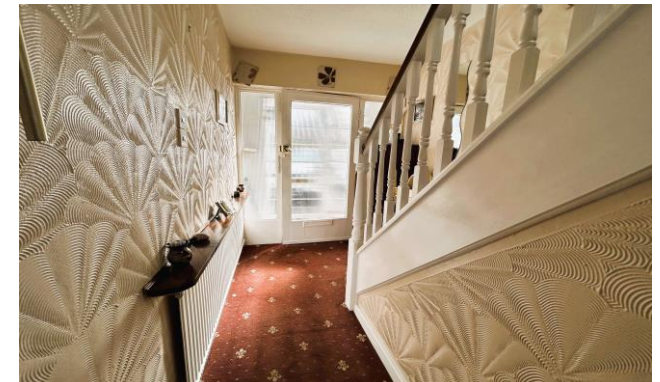
3  1  2 

A three-bedroom link semi-detached home, in need of some updating, close to sought after local schools, Chasewater and excellent transport links.

The property briefly comprises: porch, hallway, lounge, dining room, kitchen, utility room, three bedrooms, bathroom and garage.

Externally is a fore garden and driveway providing off road parking for several cars and a mature garden to rear.

No onward chain.





Agent's Note:

Every care has been taken with the preparation of these Sales Particulars but they are for general guidance only and complete accuracy cannot be guaranteed. If there is any point which is of particular importance, professional verification should be sought. The mention of any fixtures, fittings and/or appliances does not imply they are in full efficient working order as they have not been tested. All dimensions are approximate. Photographs are reproduced for general information and it cannot be inferred that any item shown is included in the sale. These Sales Particulars do not constitute a contract or part of a contract.
Came on the market: 15th September 2025

Property Specification

THREE BEDROOMS
LOUNGE / DINING ROOM
KITCHEN
UTILITY ROOM
GARAGE

Entrance Porch

Entrance Hallway

Lounge/Diner 10' 11" x 10' 11" (3.32m x 3.33m)

Kitchen 7' 7" x 7' 2" (2.32m x 2.19m)

Utility room 8' 10" x 5' 10" (2.7m x 1.77m)

Garage

First Floor Landing

Bedroom One 8' 7" min x 13' 3" max (2.61m x 4.03m)

Bedroom Two 11' 0" x 10' 10" (3.36m x 3.31m)

Bedroom Three 8' 0" x 7' 0" (2.44m x 2.13m)

Shower Room

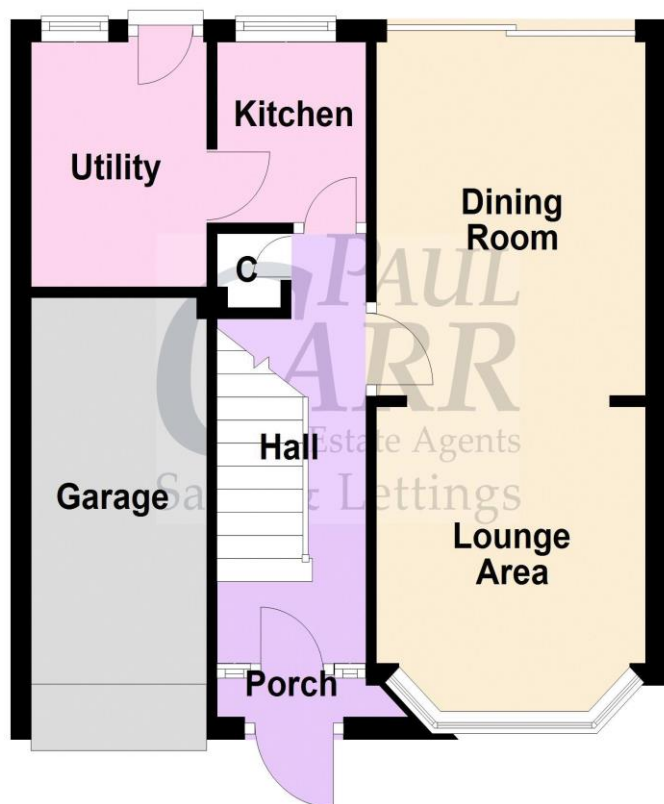
Viewer's Note:

Services connected: Mains gas, electricity, water & drainage
Council tax band: B
Tenure: Freehold

Floor Plan

This floor plan is not drawn to scale and is for illustration purposes only

Ground Floor



First Floor



Energy Efficiency Rating

**New
Instruction
Awaiting
E.P.C.**

Map Location

