



Comeragh Road, W14

£675,000

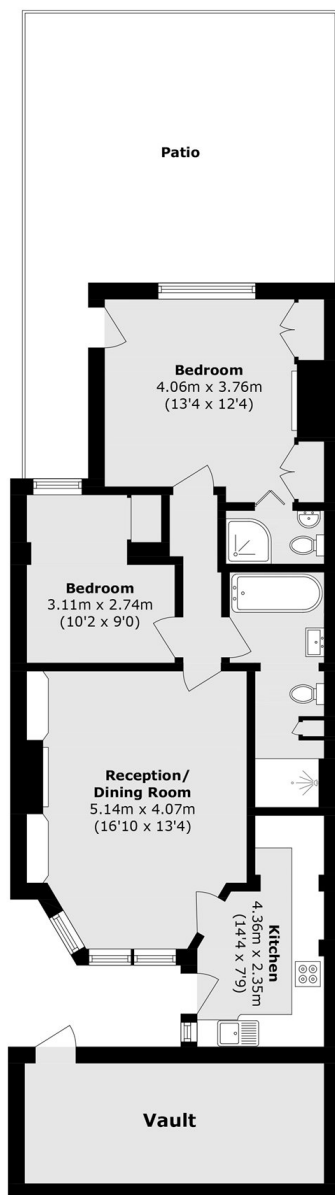
A smart, spacious two-bedroom, two-bathroom apartment with a south-facing private garden. The property is offered with no onward chain, is in excellent condition, has lots of natural light, and includes a separate and large vault area which is excellent for storage.

Comeragh Road is a sought-after residential street in the centre of West Kensington & Barons Court. The area provides excellent transport links with the Piccadilly and District lines. You are just moments away from the Famous Queens Tennis Club and have popular local shops and cafés on your door step.

Features

- Long Leasehold
- Two Bedrooms
- Two Bathrooms
- Private Garden
- Large Vault/Storage Area
- Close To Tubes

Comeragh Road, London, W14



Basement

Total area (approx.): 64.2 sq. m (691.0 sq. ft)
Vault area (approx.): 12.4 sq. m (133.5 sq. ft)