



## 10a Bartlett Close

Mayland, CM3 6TA

Asking price £650,000





# 10a Bartlett Close

Mayland, CM3 6TA

Asking price £650,000



## Entrance Hall

16'2 x 6'9 (4.93m x 2.06m)

Entrance door, stairs to first floor, radiator.

## WC

4'8 x 3'2 (1.42m x 0.97m)

Close coupled WC, wash hand basin, heated towel rail, part tiled walls.

## Study/Office

8'11 x 8'8 (2.72m x 2.64m)

Window to front, radiator.

## Living Room

17'4 x 12'10 (5.28m x 3.91m)

By-folding doors to rear, feature fireplace, radiator.

## Dining Room

12'11 x 8'4 (3.94m x 2.54m)

Window to side, radiator.

## Kitchen

13' x 9'7 (3.96m x 2.92m)

Range of fitted storage units with an integrated electric double oven and fridge/freezer. Work surfaces incorporate gas hob and sink unit, space and plumbing for dishwasher. Door to side, window to rear, door to:

## Utility Room

6'10 x 6' (2.08m x 1.83m)

Window to side. Space and plumbing for washing machine and tumble dryer. Fitted storage units. Work surface incorporates a sink unit with mixer taps. Door to Annexe.

## First Floor

## Landing

16'6 x 4'2 (5.03m x 1.27m)

Stairs to ground floor and second floor. Storage cupboard.

## Bedroom

13'10 x 12'8 (4.22m x 3.86m)

Window to rear, radiator.

## Ensuite

6'5 x 6'3 (1.96m x 1.91m)

Shower cubicle, close coupled WC, wash hand basin, heated towel rail, window to rear.

## Bedroom

12'10 x 12'3 (3.91m x 3.73m )

Fitted wardrobes, radiator, window to rear.

## Bathroom

8'7 x 6' (2.62m x 1.83m)

Panelled bath with shower over. Vanity wash hand basin, close coupled WC, fitted storage. Heated towel rail. Window to front.

## Second Floor

## Landing

17'5 x 4'3 (5.31m x 1.30m)

Stairs to first floor,

## First Floor

## Bedroom

13'2 x 11'10 (4.01m x 3.61m)

Velux to front and rear, radiator

## Dressing Room

Window to rear. Fitted wardrobes and vanity unit, radiator.

Tel: 01245 330764

### Bedroom

19'7 x 9'11 (5.97m x 3.02m)

Velux to front, radiator.

### Self Contained Annexe

#### Kitchen/Living Area

19'3 x 15'11 (5.87m x 4.85m)

Entrance door, window to front and side. Range of fitted storage cupboards with integrated electric oven, dishwasher, fridge/freezer and microwave. Radiator. Stairs to first floor

### Bedroom

17'2 x 15'10 (5.23m x 4.83m)

Window to front and side. Fitted wardrobes, radiator.

### Ensuite

Shower cubicle, close coupled WC, vanity wash hand basin. Heated towel Rail.

### Exterior

#### Frontage

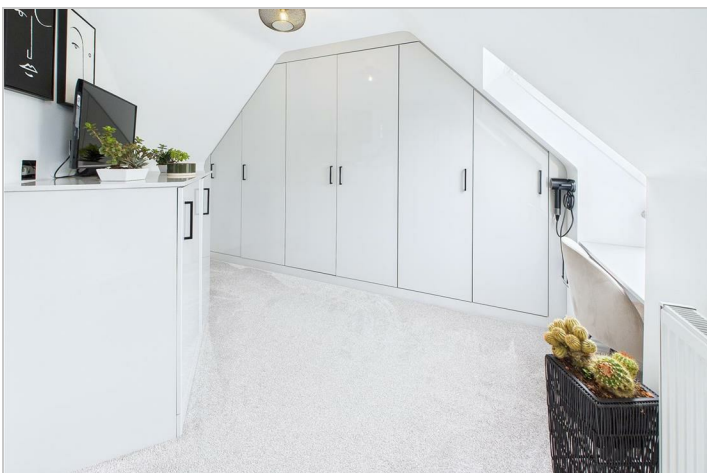
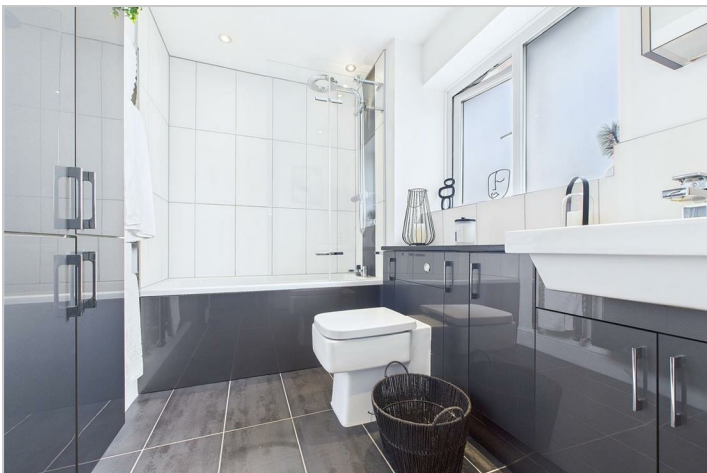
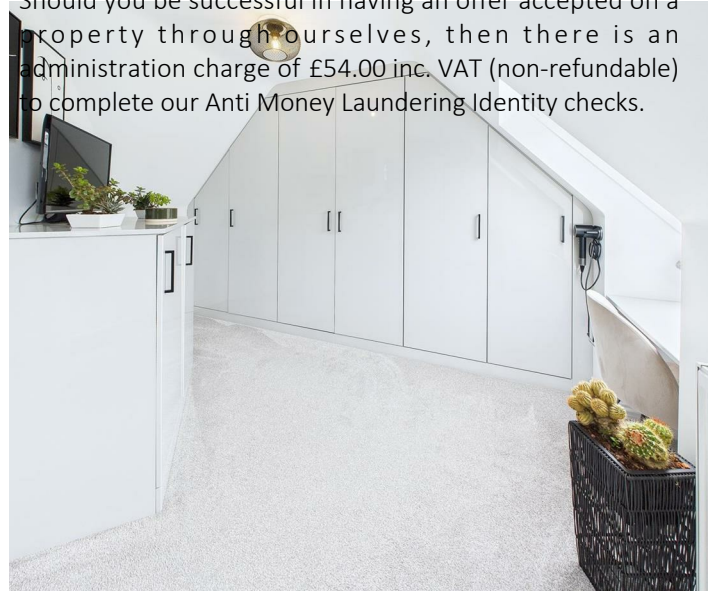
Block paved driveway, lawned area, further stoned area. Access to rear garden.

#### Rear Garden

Paved patio area, remainder laid to lawn, fencing to boundaries.

#### Agents Note

Should you be successful in having an offer accepted on a property through ourselves, then there is an administration charge of £54.00 inc. VAT (non-refundable) to complete our Anti Money Laundering Identity checks.



Road Map



Hybrid Map



Terrain Map



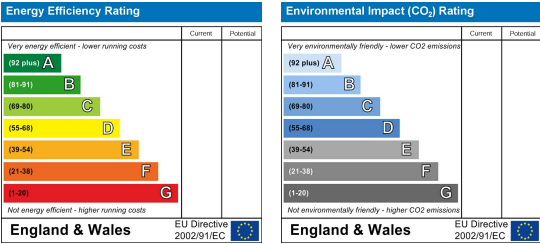
Floor Plan



Viewing

Please contact our Chelmsford Office on 01245 330764 if you wish to arrange a viewing appointment for this property or require further information.

Energy Efficiency Graph



These particulars, whilst believed to be accurate are set out as a general outline only for guidance and do not constitute any part of an offer or contract. Intending purchasers should not rely on them as statements of representation of fact, but must satisfy themselves by inspection or otherwise as to their accuracy. No person in this firm's employment has the authority to make or give any representation or warranty in respect of the property.