




P U T T E R I L L S
— est. 1992 —

Bancroft, Hitchin, Hertfordshire, SG5 1NB
Guide Price: £699,950

PROPERTY SUMMARY

Tucked away within Hitchin's highly sought-after Bancroft area, this beautiful Grade II Listed cottage effortlessly combines historic charm with modern convenience. Just moments from the vibrant town centre and within walking distance of Hitchin station, the property offers elegant and characterful living spaces, including two inviting reception rooms, a stunning bay-fronted lounge with an open fireplace, and three well-proportioned bedrooms. Period features blend seamlessly with contemporary touches throughout, while the private low-maintenance garden and rare off-road parking add to the home's appeal. Positioned within catchment for highly regarded schools and offered to the market chain-free, this exceptional cottage presents a rare opportunity to enjoy the very best of town centre living in one of Hitchin's most desirable locations.

3



2



2











PUTTERILLS
— est. 1992 —







LOCAL AUTHORITY
North Herts

TENURE
Freehold

COUNCIL TAX BAND
C

VIEWINGS
By prior appointment only

Bancroft, SG5

Approximate Area = 164.99 sq m / 1776 sq ft

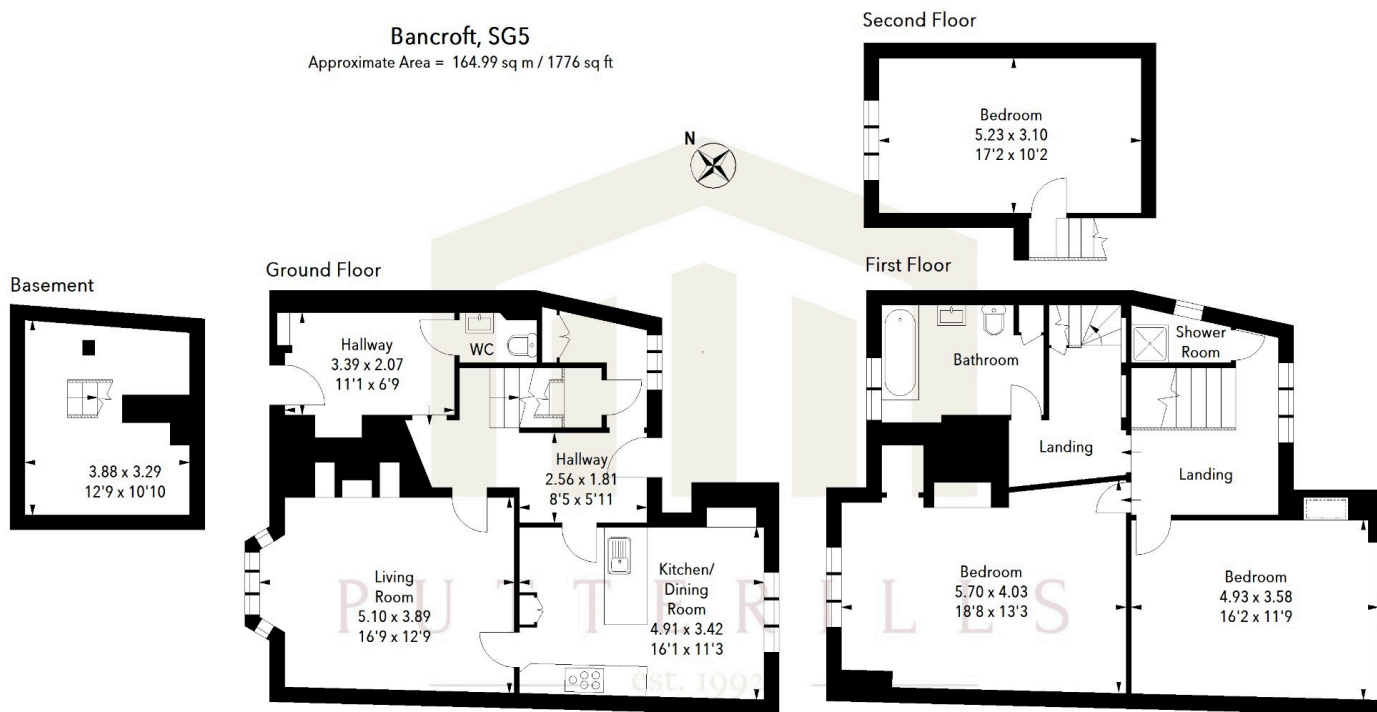


Illustration For Identification Purposes Only.
All measurements and areas are approximate, not to scale.
© Orange Tree Photography



OFFICE ADDRESS

Putterills Hitchin
60 Hermitage Road
Hitchin
SG5 1DB

CONTACT DETAILS

01462 632222
hitchin@putterills.co.uk
www.putterills.co.uk