

26 Dundalk Road
London
SE4 2JL



MULBERRY PARK ESTATES





26 Dundalk Road

£1,100,000

Stunning Victorian Living on Dundalk Road

Welcome to this impressive Victorian terrace on the highly sought-after Dundalk Road. Fully renovated to an exacting standard, this home offers a perfect blend of period charm and modern comfort, ready for you to move straight in.

Inside the Home:

The layout is ideal for a growing family, offering three distinct living zones downstairs: a cosy front lounge with a bay window and fireplace, a versatile middle room (perfect for a home office or playroom), and a generous kitchen/diner at the rear, ideal for entertaining. You'll also find the convenience of a downstairs W.C.

Upstairs, there are three remarkably spacious double bedrooms and a large, modern family bathroom with both a shower and bath. Freshly cleaned brickwork and new carpets throughout ensure the home feels brand new.

Outdoor Space:

The North/West facing garden is perfectly manicured, offering a manageable, private space for summer drinks and outdoor play.

The Location:

Brockley is famous for its artistic spirit, lush green spaces, and community buzz. You'll be right in the heart of it, with local festivals, markets, and events happening all year round.

Transport: You're well connected. Beyond the local Overground (Windrush Line) with frequent trains to London Bridge and Victoria, Nunhead station is also close by, offering easy access to Central London, Elephant & Castle, St Pancras, and Blackheath.


Lifestyle: Enjoy brunch at Browns of Brockley or Good as Gold, and dinner at local favourites Parlez and Ellary's. Essentials are sorted with nearby shops just a short walk away.

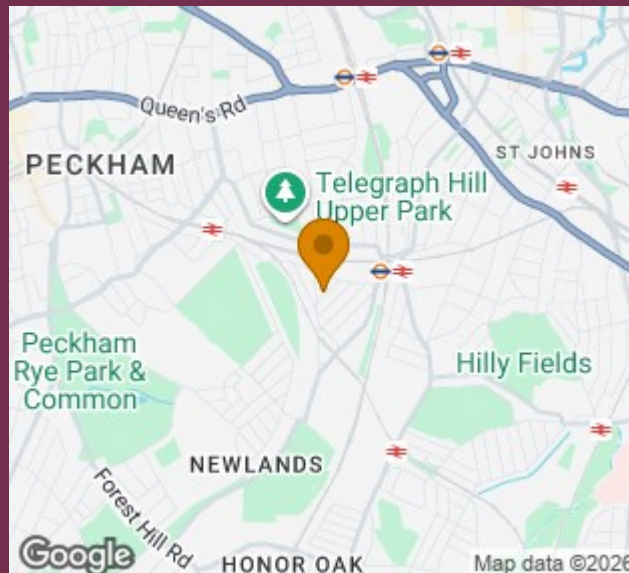
Education & Greenery: Ideally placed for outstanding schools like Gordonbrock, John Stainer, and Prendergast. For fresh air, you're spoilt for choice with Hilly Fields, Telegraph Hill and Blythe Hill Fields all within reach.



- Fully renovated between 2015-2025 to a high standard and specification
- Highly sought after residential road
- Short walk from Brockley station with superb transport links into Victoria and London Bridge
- Private rear garden
- Both loft and cellar storage
- Period features throughout in the form of bay windows, fireplace and original floorboards
- Integrated kitchen with high spec appliances including dishwasher, wine fridge and washing machine
- Recently cleaned brickwork and new bespoke tiles fitted in Porch
- Three double bedrooms
- large family bathroom suite with separate shower and bath

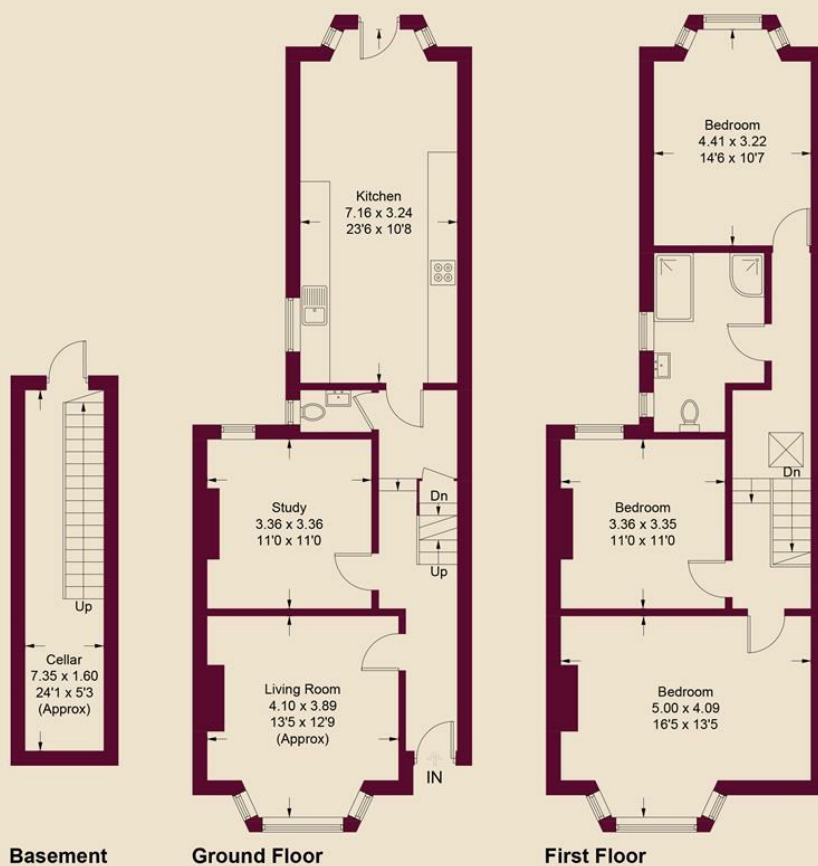
Energy Efficiency Rating

	Current	Potential
Very energy efficient - lower running costs		
(92 plus) A		
(81-91) B		
(69-80) C		
(55-68) D	63	
(39-54) E		
(21-38) F		
(1-20) G		
Not energy efficient - higher running costs		
England & Wales	EU Directive 2002/91/EC	



Agents Note: Whilst every care has been taken to prepare these particulars, they are for guidance purposes only. All measurements are approximate and are for general guidance purposes only and whilst every care has been taken to ensure their accuracy, they should not be relied upon and potential buyers/tenants are advised to recheck the measurements

Dundalk Road, SE4



Approximate Gross Internal Area
 Basement = 11.9 sq m / 128 sq ft
 Ground Floor = 62.3 sq m / 670 sq ft
 First Floor = 62.8 sq m / 676 sq ft
 Total = 137.0 sq m / 1474 sq ft

Illustration for identification purposes only, measurements are approximate, not to scale. Fourlabs.co © (ID1278134)



Contact:

Emma MacCormack MNAEA

E: emma@mulberryparkestates.co.uk

T: 0208 050 9915

M: 07946250365



Socials:

www.mulberryparkestates.co.uk
www.linktr.ee/mulberryparkestates
[@mulberrypark_estates](https://www.instagram.com/mulberrypark_estates)

