



Jordan Fishwick

ALTRINCHAM
Wellington Place



Wellington Place, Altrincham, WA14 2QH

Asking Price £625,000



The Property

Jordan Fishwick are proud to present for sale this stunning Georgian three bedroom mid-terrace positioned in this secluded yet highly convenient backwater location just off The Downs, within a moment's walk of Altrincham Town Centre.

The property has been meticulously renovated throughout with a stunning blend of modernity and period charm. In brief, to the ground floor, there is an entrance hall, lounge with fireplace, dining room with original stone flooring and newly fitted kitchen. The first floor consists of two double bedrooms and a newly fitted bathroom. The second floor has a double bedroom with ensuite shower room and dressing area/ study. Finally in the basement there is a W.C and the cellar which is currently used as a utility room.

Externally you have off road parking for two cars and to the rear a courtyard with access to a "Ginnell".

Viewings are strongly advised to appreciate this truly stunning home.

Directions

WA14 2QH



- Immaculately Presented Three Bed Georgian Terrace
- Newly Renovated Throughout
- Less than 5 Minute Walk to Altrincham Town Centre
- Off Road Parking
- Quiet Cul De Sac
- Basement with DWC
- 2 Bathrooms
- Rear Court Yard
- Three Double Bedrooms
- 2 Reception Rooms

Postcode - WA14 2QH

EPC Rating - D

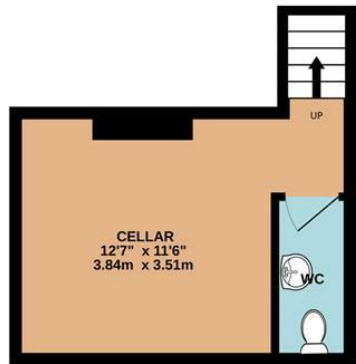
Floor Area - 1418.00 sq ft

Local Authority - Trafford

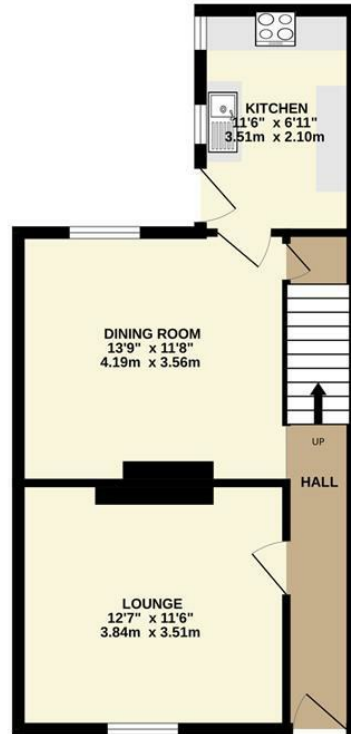
Council Tax - E



BASEMENT
190 sq.ft. (17.7 sq.m.) approx.



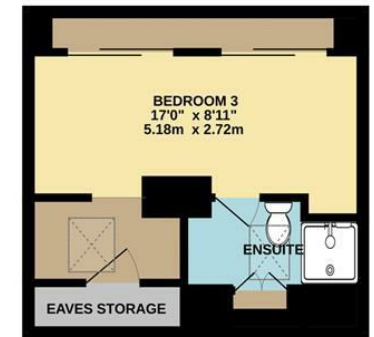
GROUND FLOOR
430 sq.ft. (40.0 sq.m.) approx.



1ST FLOOR
405 sq.ft. (37.6 sq.m.) approx.



2ND FLOOR
212 sq.ft. (19.7 sq.m.) approx.



TOTAL FLOOR AREA : 1418sq.ft. (131.7 sq.m.) approx.

Whilst every attempt has been made to ensure the accuracy of the floorplan contained here, measurements of doors, windows, rooms and any other items are approximate and no responsibility is taken for any error, omission or mis-statement. This plan is for illustrative purposes only and should be used as such by any prospective purchaser. The services, systems and appliances shown have not been tested and no guarantee as to their operability or efficiency can be given.

Made with Metropix ©2025



These particulars are believed to be accurate but they are not guaranteed and do not form a contract. Neither Jordan Fishwick nor the vendor or lessor accept any responsibility in respect of these particulars, which are not intended to be statements or representations of fact and any intending purchaser or lessee must satisfy himself by inspection or otherwise as to the correctness of each of the statements contained in these particulars. Any floorplans on this brochure are for illustrative purposes only and are not necessarily to scale.

Offices at: Chorlton, Didsbury, Disley, Hale, Glossop, Macclesfield, Manchester Deansgate, Manchester Whitworth Street, New Mills, Sale, Wilmslow and Withington

0161 929 9797

hale@jordanfishwick.co.uk
www.jordanfishwick.co.uk