



HARDWICKS SQUARE, SW18

£425,000

- Chain-free sale
- Two double bedroom apartment
- Move-in ready/recent upgrades
- Large private balcony
- Sought after location
- Energy rating: B





ABOUT THE HOME

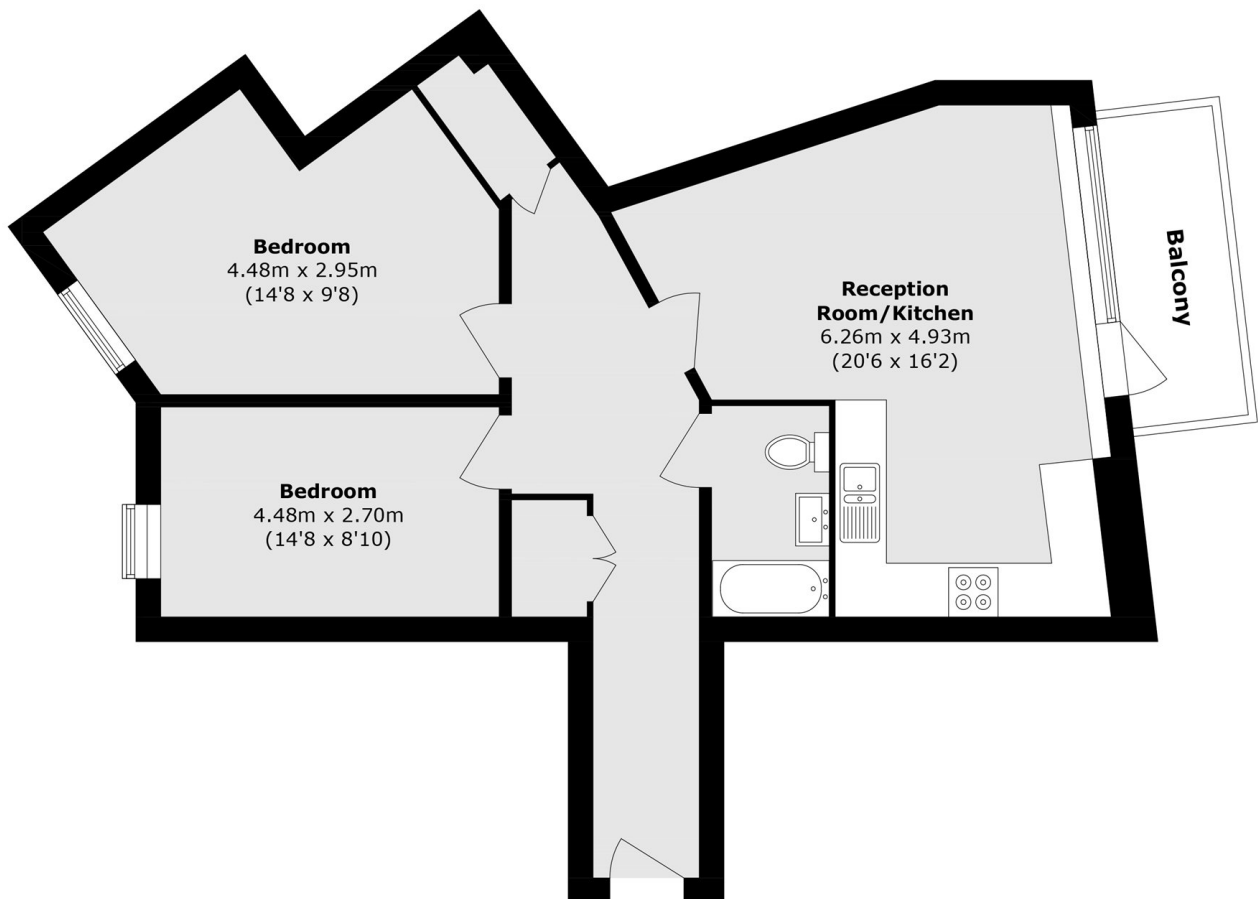
A bright and spacious two double-bedroom apartment in the heart of Wandsworth Town, offering 791 sq ft of well-designed living space, a large private balcony, and no onward chain.

At the centre is a generous open-plan living and dining area with floor-to-ceiling windows that fill the space with natural light. Recently upgraded flooring and direct balcony access make it ideal for relaxing, working from home, or entertaining. The contemporary kitchen features modern integrated appliances and ample storage. Both bedrooms are well-proportioned doubles with newly fitted carpets, while the recently renovated bathroom is fully tiled in a clean, neutral finish. The layout also offers potential to add an en-suite or second bathroom. A spacious hallway with built-in storage adds practicality, and council tax is among the lowest in the UK.

Perfectly positioned in the centre of Wandsworth Town, the property is a stones throw from King George's Park and Southside Shopping Centre, offering supermarkets, restaurants and everyday amenities. Wandsworth Town station (0.5 miles) provides Overground services, while [East Putney Underground station \(0.6 miles\)](#) offers District Line connections for easy access across London.







Total area (approx.): 73.5 sq. m (791.1 sq. ft)

Balcony area (approx.): 5.3 sq. m (57.0 sq. ft)

JACKSONS EARLSFIELD

372-374 Garratt Lane,
Earlsfield, London, SW18 4ES
Sales: 020 8971 7979
Lettings: 020 8971 7070

Energy Rating: B We aim to make our particulars both accurate and reliable. However they are not guaranteed; nor do they form part of an offer or contract. If you require clarification on any points then please contact us, especially if you're traveling some distance to view. Please note that appliances and heating systems have not been tested and therefore no warranties can be given as to their good working order.