



The Chalet, Manor House Drove Lane, Coombe Bissett, Salisbury, Wiltshire, SP5 4LD

£900 PCM

About The Property

A superior detached FURNISHED annex in a sought after location with good access to Salisbury District Hospital. The annex comprises: Front door to cosy sitting room with working wood burner, Kitchen comes well equipped with slim line dishwasher, electric oven and hob, fridge freezer, washing machine and tubal dryer. Upstairs has one well sized double bedroom and separate bathroom with shower over bath, inset wash hand basin with cupboard under, WC, Court yard to the font of the property. Electric heating. On street parking for one car. Council Tax band to be confirmed.

Coombe Bissett is a picturesque and well-connected village set in the lush Wiltshire countryside, within the Cranborne Chase and West Wiltshire Downs National Landscape. The River Ebble winds through the village, adding to its charm and providing a peaceful backdrop to its mix of period homes, many of which are listed.

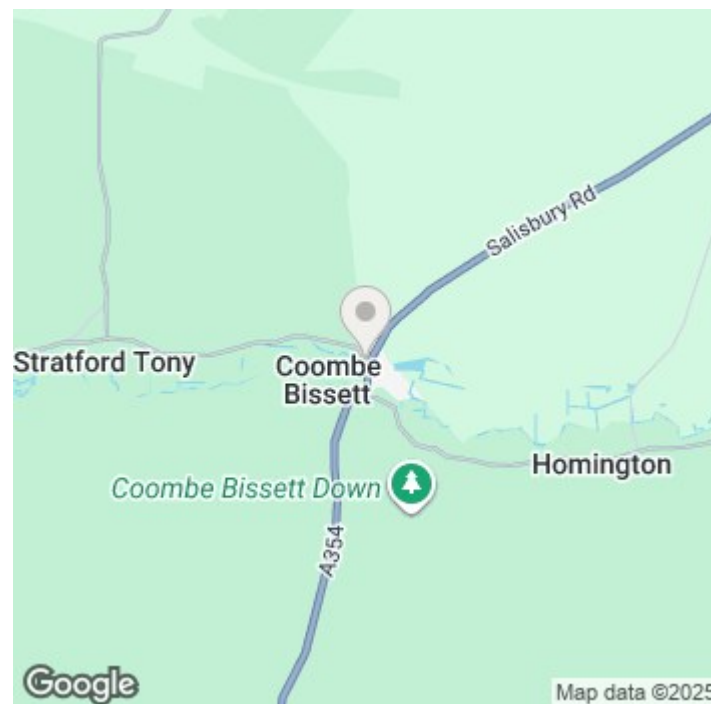
The village enjoys a strong sense of community, supported by a well-used village hall, primary school, local shop with Post Office, and several active sports clubs. The Fox and Goose pub offers a warm welcome, real ales, and classic country fare—perfect after a walk in the surrounding hills and woodlands.

With its idyllic setting, riverside paths, and easy access to nearby Salisbury, Coombe Bissett offers a tranquil rural lifestyle without feeling remote.



688.00 sq ft

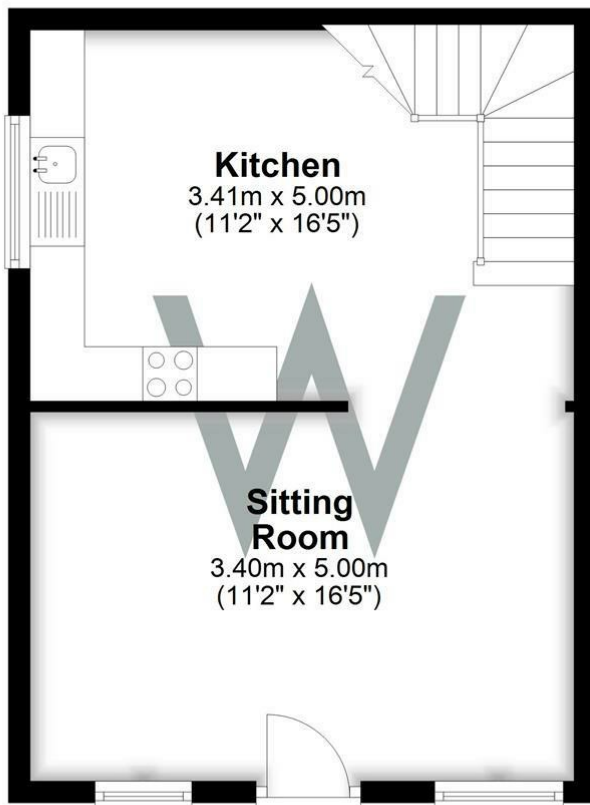
- Rural location
- Close to the hospital
- Furnished
- Electric heating
- Parking
- Pets allowed
- Council tax band C
- EPC E





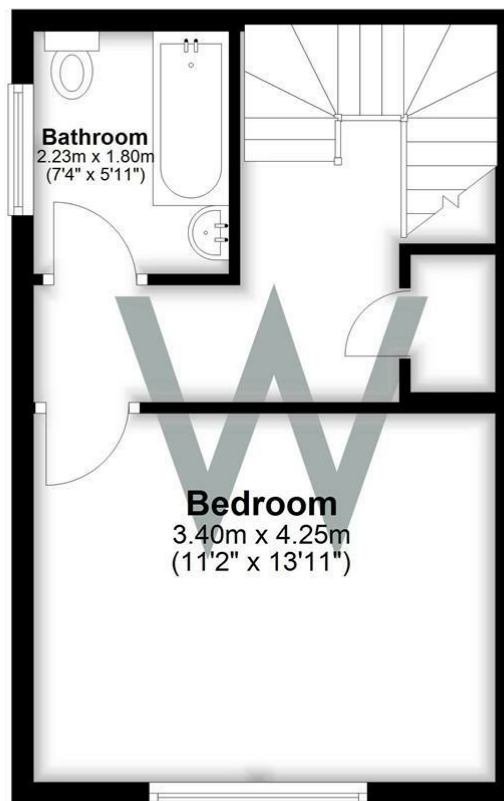
Ground Floor

Approx. 34.6 sq. metres (372.1 sq. feet)



First Floor

Approx. 29.4 sq. metres (316.1 sq. feet)



Total area: approx. 63.9 sq. metres (688.2 sq. feet)

Further Information

Let available date: 5th January 2026
NB: This date is provisional and will only be confirmed once referencing has been successfully completed.

Property type: Annex

Furnish type: Furnished

Deposit: £1,035

Local authority: Wiltshire Council

Council Tax: Band C

EPC: E(40)

Energy Efficiency Rating

	Current	Potential
Very energy efficient - lower running costs		
(92 plus) A		87
(81-91) B		
(69-80) C		
(55-68) D		
(39-54) E	40	
(21-38) F		
(1-20) G		
Not energy efficient - higher running costs		
England & Wales	EU Directive 2002/91/EC 