



3 The Close, Rye





### 3 The Close

Fully refurbished three bedroom home near Rye centre. Spacious layout, modern kitchen, utility, two bathrooms, low maintenance garden, driveway for multiple cars. Ideal family living. CHAIN FREE.

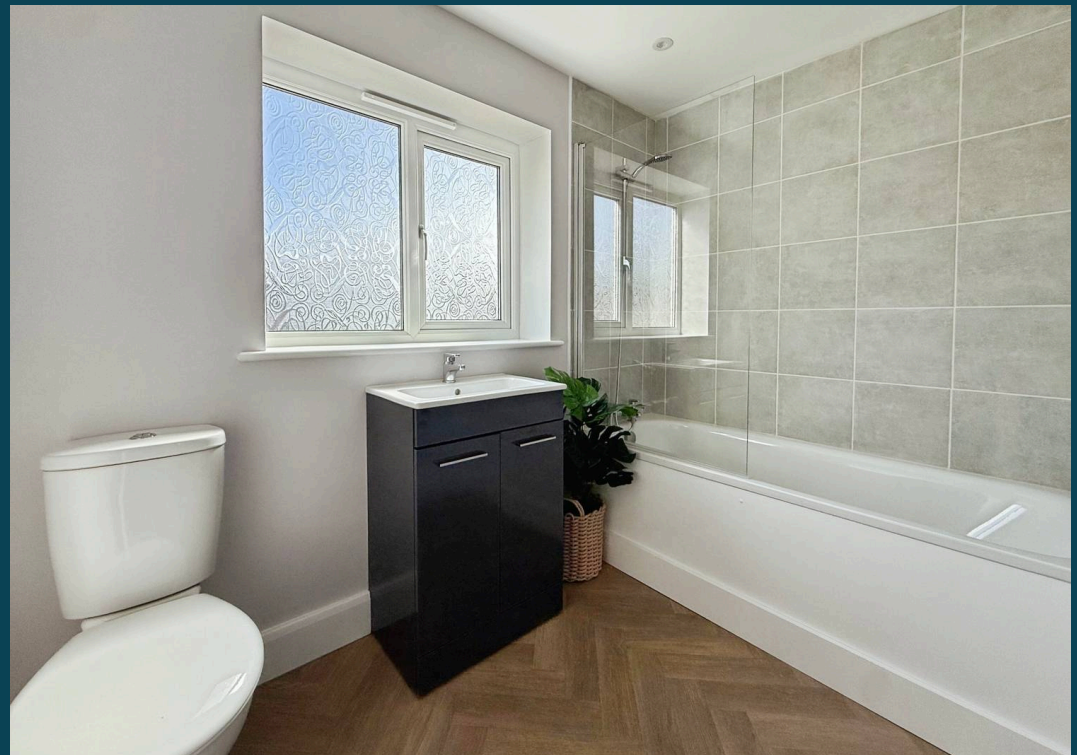
Council Tax band: C

Tenure: Freehold

EPC Energy Efficiency Rating: C

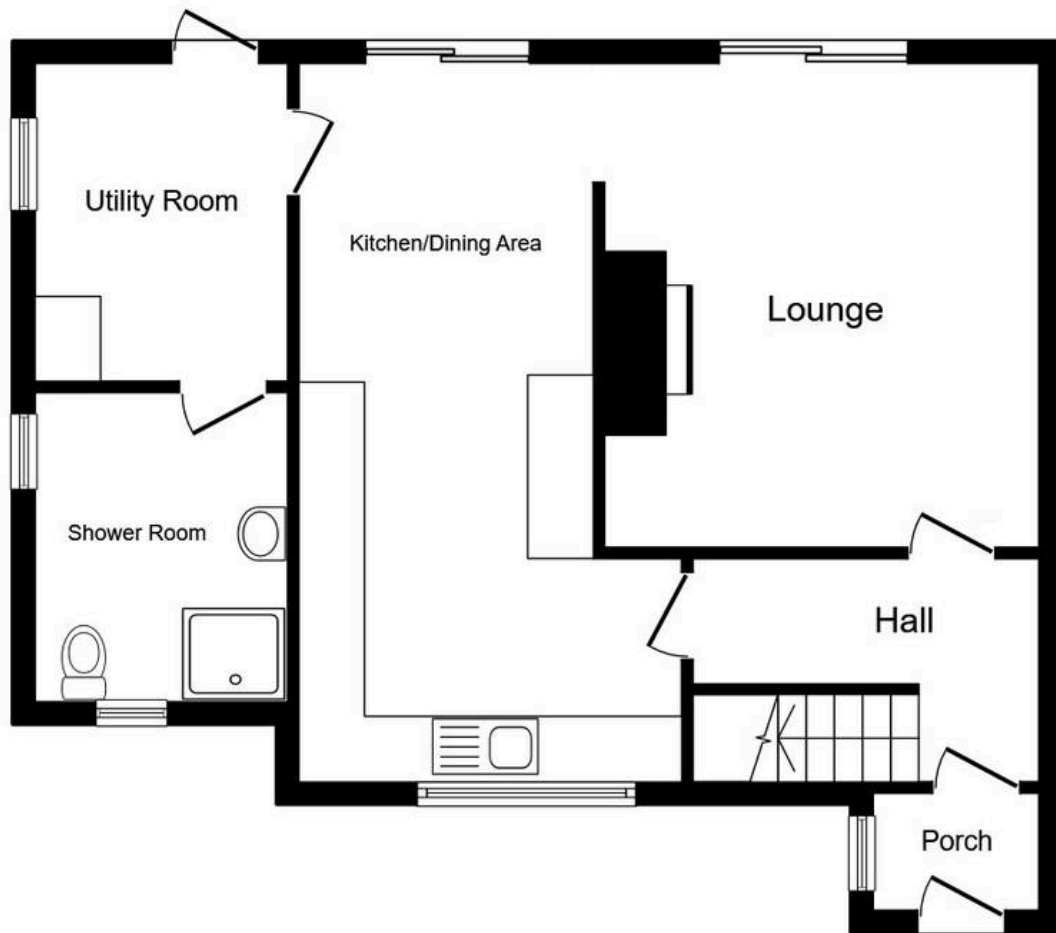
EPC Environmental Impact Rating:

- Newly Refurbished Three Bedroom Semi Detached Home
- Chain Free
- Three Bedrooms
- Downstairs Shower Room
- Utility Room
- Brand New Kitchen/Diner
- A Short Walk to Rye Town Centre
- Gardens to Front & Rear



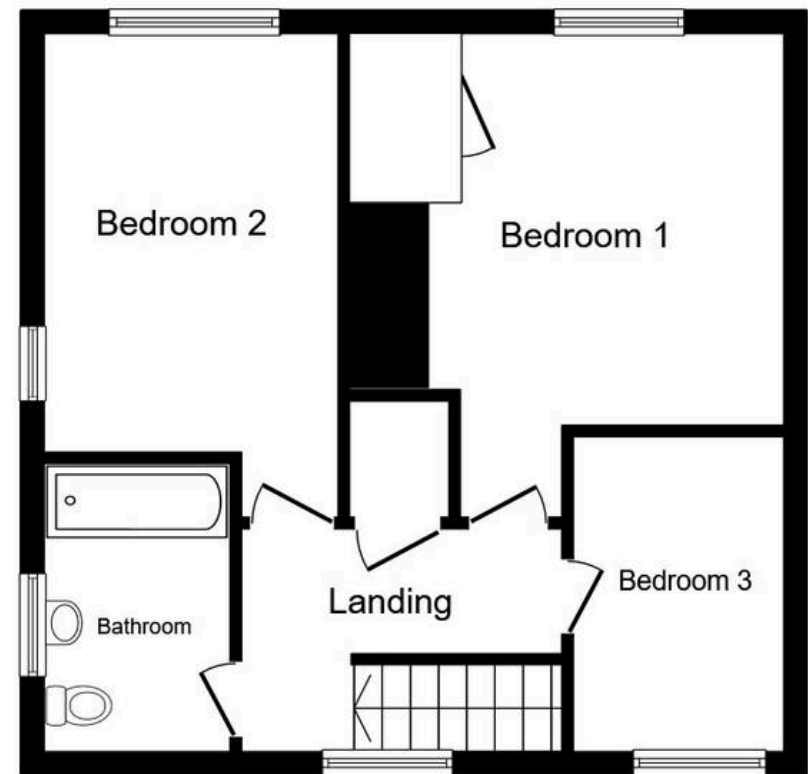






### Ground Floor

Floor area 60.2 sq.m. (648 sq.ft.)



### First Floor

Floor area 44.3 sq.m. (477 sq.ft.)

**Total floor area: 104.5 sq.m. (1,125 sq.ft.)**

This floor plan is for illustrative purposes only. It is not drawn to scale. Any measurements, floor areas (including any total floor area), openings and orientations are approximate. No details are guaranteed, they cannot be relied upon for any purpose and do not form any part of any agreement. No liability is taken for any error, omission or misstatement. A party must rely upon its own inspection(s). Powered by [www.Propertybox.io](http://www.Propertybox.io)



## Nested Rye

01797 903045 • [barnaby.osborne@nested.com](mailto:barnaby.osborne@nested.com) • [nested.com/barnaby-osborne](https://nested.com/barnaby-osborne)