



110 TEMPEST AVENUE, POTTERS BAR EN6 5LA

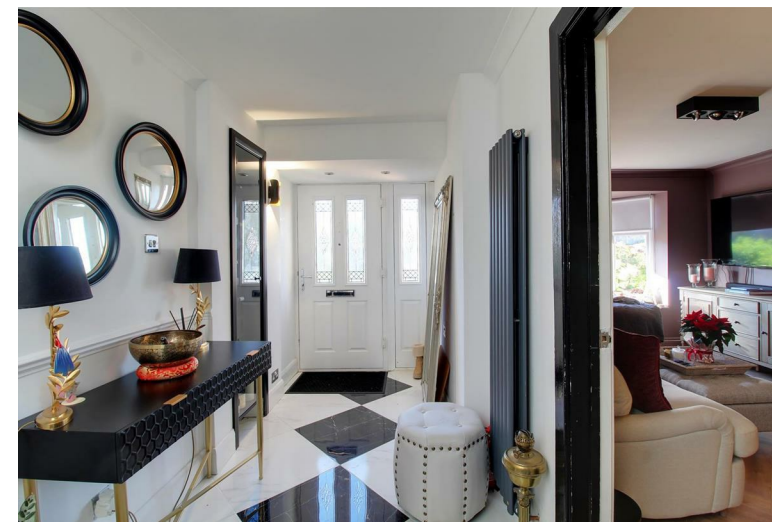
Asking Price £585,000 | Freehold

ANDREW WARD EST. 1988
ESTATE AGENTS



Property Overview

A stunning two/three bedroom extended semi detached house with private drive and beautiful southerly aspect landscaped garden to rear. The property offers luxury living space comprising entrance hall with cloakroom, dining room inter-connecting to a wonderful open plan living room with contemporary kitchen with island, utility room and sitting room/bedroom. To the first floor there are two bedrooms and access to loft space served by a modern shower room. The property is approached by a private drive with electric car charging point. The gardens to rear offer an abundance of flowers and shrubs with steps leading down from the house with raised patio areas to rear and side.





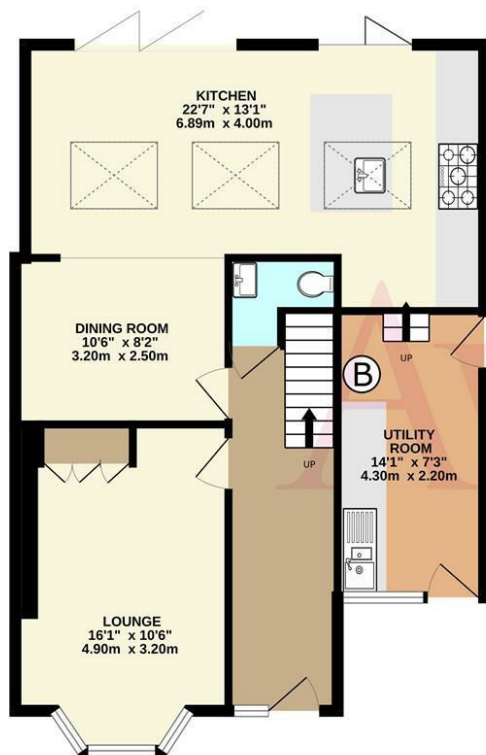
Property Features

- Living Room/Kitchen: 22'7 x 13'1
- Dining Room: 10'6 x 8'2
- Utility Room: 14'1 x 7'3
- Cloakroom
- Drive with Parking for Two Cars
- Bedroom One: 11'2 x 10'4
- Bedroom Two: 10'4 x 8'11
- Lounge/Bedroom: 16'1 x 10'6
- Shower Room
- Landscaped Garden

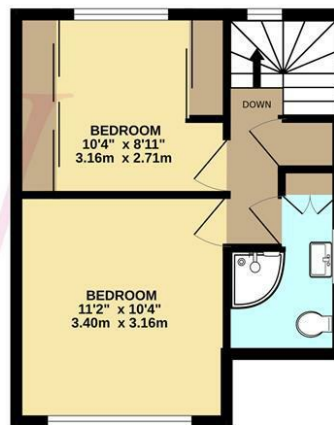
Agents Notes

The property has been finished to an exacting standard with further scope to extend further (subject to planning). Features include: luxury inter-grated kitchen, generous size utility room, doors and full height windows from the living room over looking the garden making it ideal for entertaining. filtered drinking water system and large loft space.

GROUND FLOOR
715 sq.ft. (66.4 sq.m.) approx.



1ST FLOOR
300 sq.ft. (27.9 sq.m.) approx.



TOTAL FLOOR AREA : 1015 sq.ft. (94.3 sq.m.) approx.

Whilst every attempt has been made to ensure the accuracy of the floorplan contained here, measurements of doors, windows, rooms and any other items are approximate and no responsibility is taken for any error, omission or mis-statement. This plan is for illustrative purposes only and should be used as such by any prospective purchaser. The services, systems and appliances shown have not been tested and no guarantee as to their operability or efficiency can be given.
Made with Metropix ©2025



Contact us

Bradmore Green Office, 35 Bradmore Green, Brookmans Park, Herts, AL9 7QR

01707 649779

www.andrewward.co.uk

Our Offices

BARNET

175 High Street, Barnet EN5 5SU

Tel: 020 8441 6000

Email: barnet@andrewward.co.uk

BROOKMANS PARK

35 Bradmore Green, Brookmans Park AL9 7QR

Tel: 01707 649779

Email: brookmanspark@andrewward.co.uk

POTTERS BAR

149 High Street, Potters Bar EN6 5BB

Tel: 01707 657181

Email: pottersbar@andrewward.co.uk

Disclaimer: "These property particulars, including floor plans, are set out as a general outline only for guidance and DO NOT constitute any part of an offer or contract. Any purchaser or other must satisfy themselves by inspection or otherwise as to their accuracy. All measurements are given as approximate, no survey or testing of appliances has been carried out. No employee of Andrew Ward Estate Agents has the authority to make or give any representation or warranty in respect of the property."

All enquiries and negotiations must be carried out through Andrew Ward Estate Agents.

ANDREW WARD EST. 1988
ESTATE AGENTS