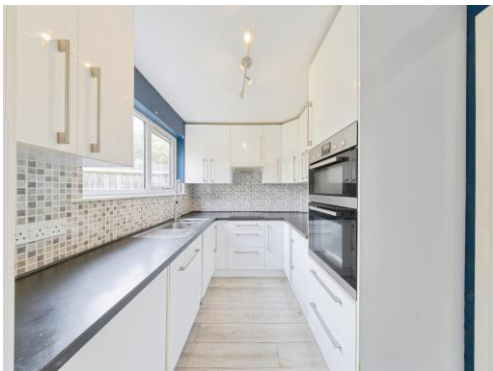




Connells

White Alder
Stacey Bushes Milton Keynes



Property Description

Three Bedroom Mid-Terrace Home in Stacey Bushes

Situated in the popular residential area of Stacey Bushes, just a short distance from the historic market town of Stony Stratford, this well-presented three-bedroom mid-terrace property offers an excellent opportunity for first-time buyers, growing families, and investors alike.

The accommodation comprises a spacious living room, a generous kitchen/diner providing the perfect space for family meals, and entertaining, downstairs cloak room and three well-proportioned bedrooms along with family bathroom. Outside, the property benefits from a good-sized rear garden, ideal for outdoor enjoyment, along with off-street parking to the front and carport

Offered to the market with vacant possession, this home is ready for its next owner to move straight in and make it their own.

Stacey Bushes enjoys a convenient location with excellent transport connections, including easy access to Milton Keynes Central railway station, offering fast links to London and beyond. Nearby Stony Stratford boasts a thriving High Street filled with independent shops, cafés, restaurants, and local amenities, while Milton Keynes provides extensive shopping, leisure, and entertainment facilities.

Early viewing is highly recommended to appreciate everything this fantastic home has to offer.

Entrance Hall

Doors to accommodation and stairs rising to first floor. Large utility cupboard under stairs.

Cloakroom

WC and Sink unit

Lounge

Bright and spacious room with window to front aspect.

Dining Room

Accessed through kitchen and from the living room, the dining space provides ample room for table and chairs and bi fold doors opening onto the rear garden.

Kitchen

Open plan to the dining room the kitchen offers a range of wall and base units, built in appliance and sink and drainer . Window to the rear aspect.

First Floor

Bedroom 1

Generous master bedroom with window to rear aspect.

Bedroom 2

Double bedroom with window to front aspect.

Bedroom 3

Small Double bedroom with window to rear aspect.

Bathroom

WC, Sink and bath. Frosted window to front aspect.

Outside

Front

Garden area with path to front door. Parking for 2 vehicles, one under covered carport area.

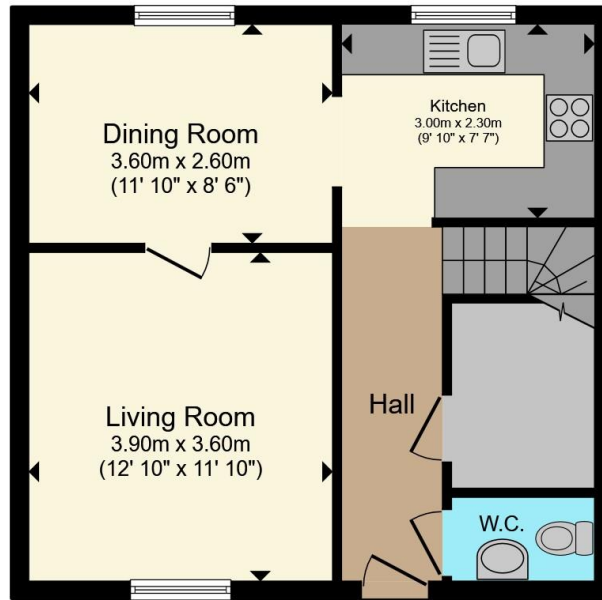
Rear

Good sized rear garden mainly laid to lawn with patio area and rear access gate.

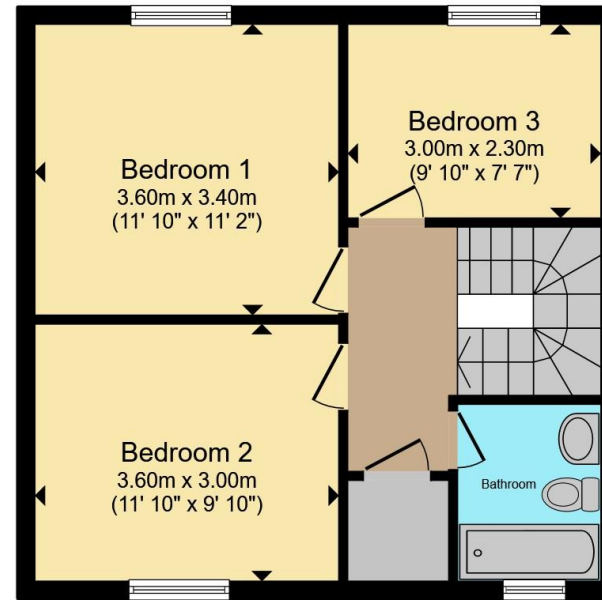








Ground Floor



First Floor

Total floor area 88.4 m² (952 sq.ft.) approx

This floor plan is for illustrative purposes only. It is not drawn to scale. Any measurements, floor areas (including any total floor area), openings and orientation are approximate. No details are guaranteed, they cannot be relied upon for any purpose and they do not form part of any agreement. No liability is taken for any error, omission or misstatement. A party must rely upon its own inspection(s). Powered by www.propertybox.io



To view this property please contact Connells on

T 01908 563 993
E stonystatford@connells.co.uk

82 High Street Stony Stratford
 MILTON KEYNES MK11 1AH

EPC Rating: C

Tenure: Freehold

check out more properties at connells.co.uk



1. MONEY LAUNDERING REGULATIONS Intending purchasers will be asked to produce identification documentation at a later stage and we would ask for your co-operation in order that there will be no delay in agreeing the sale. 2. These particulars do not constitute part or all of an offer or contract. 3. The measurements indicated are supplied for guidance only and as such must be considered incorrect. Potential buyers are advised to recheck measurements before committing to any expense. 4. We have not tested any apparatus, equipment, fixtures, fittings or services and it is in the buyers interest to check the working condition of any appliances.

Connells Residential is registered in England and Wales under company number 1489613, Registered Office is Cumbria House, 16-20 Hockliffe Street, Leighton Buzzard, Bedfordshire, LU7 1GN. VAT Registration Number is 500 2481 05.

See all our properties at www.connells.co.uk | www.rightmove.co.uk | www.zoopla.co.uk

Property Ref: SSD307842 - 0004