



Jubilee House

Hooper Street | | Cambridge | CB1 2NZ

£1,680 PCM

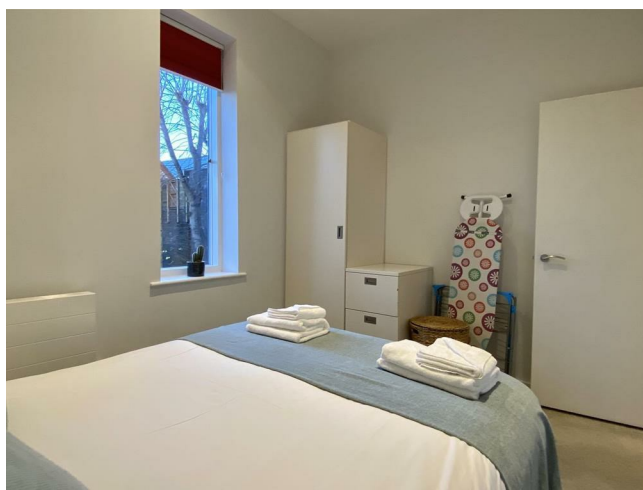
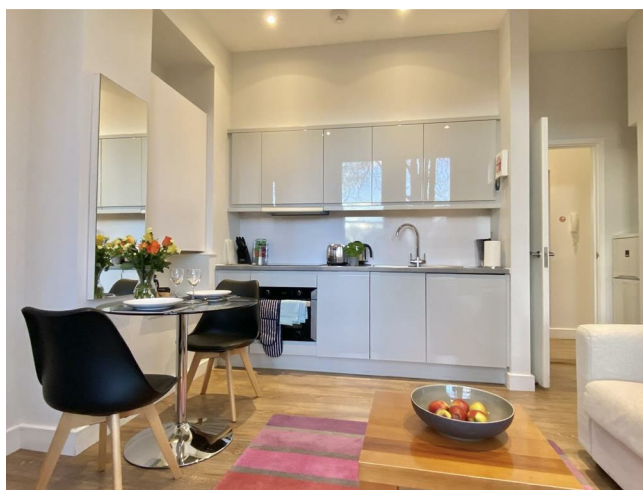
COOKE
CURTIS
& CO

Key features

- 32 sqm / 344 sqft
- 1 bed, 1 bath, 1 recep
- EPC - C / 71
- Council tax band - B
- Gas central heating
- Allocated Parking
- Fully Furnished
- Available March 2026

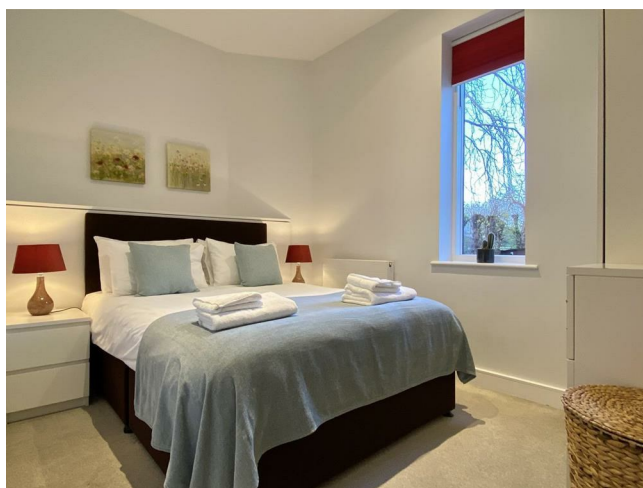
Description

Fully furnished one-bedroom apartment on Hooper Street offers a cosy living area and the convenience of on-site parking. Ideally located a mile from Cambridge City Centre, with a pleasant walk through the green space of Parker's Piece.



Directions


Hooper Street is a particularly desirable neighbourhood in the highly regarded Petersfield wards. It is conveniently situated between East Road and Mill Road, around half a mile east of the City Centre with its combination of ancient and modern buildings, winding lanes, excellent choice of schools and wide range of shopping facilities. The property is a 12 minute walk from Cambridge Railway Station with direct links to London. Mill Road, The Grafton, Beehive Shopping Centres and Cambridge Retail Park are also a short walk away. The city centre is reached by foot in just 20 minutes. Schooling is



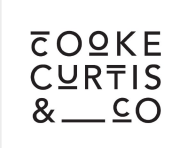


Floor plans



Energy Efficiency Rating		
	Current	Potential
<i>Very energy efficient - lower running costs</i>		
(92 plus) A		
(81-91) B		
(69-80) C	71	77
(55-68) D		
(39-54) E		
(21-38) F		
(1-20) G		
<i>Not energy efficient - higher running costs</i>		
England & Wales	EU Directive 2002/91/EC 	

Council Tax Band **B** EPC Rating **C**



40 High Street
 Trumpington
 Cambridge
 Cambridgeshire
 CB2 9LS
 01223 508050

hello@cookecurtis.co.uk
 cookecurtis.co.uk