

For Rent



People Make Places



Sackville Street, Mayfair W1

2 bedrooms | 862 sq ft

£1,275 pw





Two bedroom apartment in a prime position in Mayfair finished to a high specification and with a welcoming living area. Two small balconies are accessible from the master bedroom & reception room, while a contemporary kitchen is open plan to the living space. Available unfurnished, early June.

What you need to know

- Two bedrooms
- Two bathrooms
- Guest cloak room
- Air conditioning
- Small balconies
- Furnished
- Modern development
- Central Mayfair
- Available early June
- Short walk to Piccadilly Circus



Sackville Street, Mayfair W1



Overview

Finished to a contemporary aesthetic with wooden floors in the principal rooms and modern beech woodwork, this two bedroom apartment occupies a prime position in Mayfair with a weekday porter. Well proportioned, the long entrance hall provides access to the various rooms, including a guest cloak room and shower room. Both bedrooms are double in size and have fitted wardrobes, while the master has an ensuite bathroom and access to a balcony area. A large living area lies at the end of the apartment with an open-plan kitchen fitted with contrasting white and wood units cleverly tucked away at one end. Air conditioning is fitted for tenant comfort.

Sackville Street lies just off Piccadilly with Piccadilly Circus (Bakerloo and Piccadilly Lines) and Green Park (Victoria and Piccadilly Lines) within a short walk. Bus services run along Piccadilly itself, while St James's, Soho, Covent Garden and Fitzrovia are all accessible on foot. Nearby green spaces include Green Park and St James's, two of central London's best-known parks and popular exercise spots.

The apartment is available from early June on an unfurnished basis. Westminster Council tax band: G.



People Make Places

London is a collection of inspiring urban villages and one of the most exciting places in the world to live, work & play.

We work with both property owners and their occupiers, sharing the story of these vibrant neighbourhoods, conveying the unique soul & energy to future custodians, the people who'll keep them buzzing.

And unlike many real estate businesses we're not just about buildings, because streets & buildings don't make a neighbourhood.

We're about building relationships, because **people make places**.

MISINTERPRITATION ACT [COPYRIGHT] DISCLAIMER: Tavistock Bow Ltd for themselves and for the vendor(s) of this property whose agents thy are, given notice that: 1. These particulars do not constitute, not constitute any part of, an offer or contract. 2. None of the statements contained in these particulars as to the property are to be relied on as statements or representations of fact. 3. Any intending purchaser or lessee must satisfy themselves by inspection or otherwise as to the correctness of each of the statements contained in these particulars. 4. The vendor(s) or lessor(s) do not make or give and neither Tavistock Bow Ltd nor any person in their employment has any authority to make or give any representation or warranty whatever in relation to this property. Finance Act 1989, Unless otherwise stated all prices and rents are quote exclusive of VAT. Property Misrepresentation Act 1991; These details are believed to be correct at the time of compilation but may be subject to subsequent amendment.

Follow us:     @tavistockbow

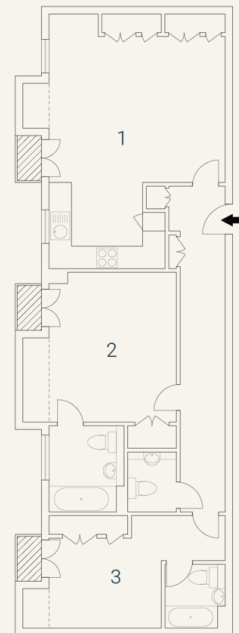
Score	Energy rating	Current	Potential
92+	A		
81-91	B		
69-80	C		
55-68	D		57 D
39-54	E	54 E	
21-38	F		
1-20	G		

Sackville Street W15

Approximate Gross Internal Area 80 sqm/ 862 sq ft

Sixth Floor

1 Reception	2 Bedroom	3 Bedroom
Room/ Kitchen	3.38 x 3.19M 11'1" x 10'5"	4.64 x 3.48M 15'2" x 11'5"
7.62 x 4.64M 25'0" x 15'2"		



Floorplan produced for Tavistock Bow. Illustration for identification purposes only and not to scale. All measurements are approximate and not to be relied upon.

tavistockbow

21 New Row, Covent Garden,
London, WC2N 4LE

t: 020 7477 2177
e: hello@tavistockbow.com
w: tavistockbow.com



Sackville Street, Mayfair W1