



Lewin Road, SW16

£395,000

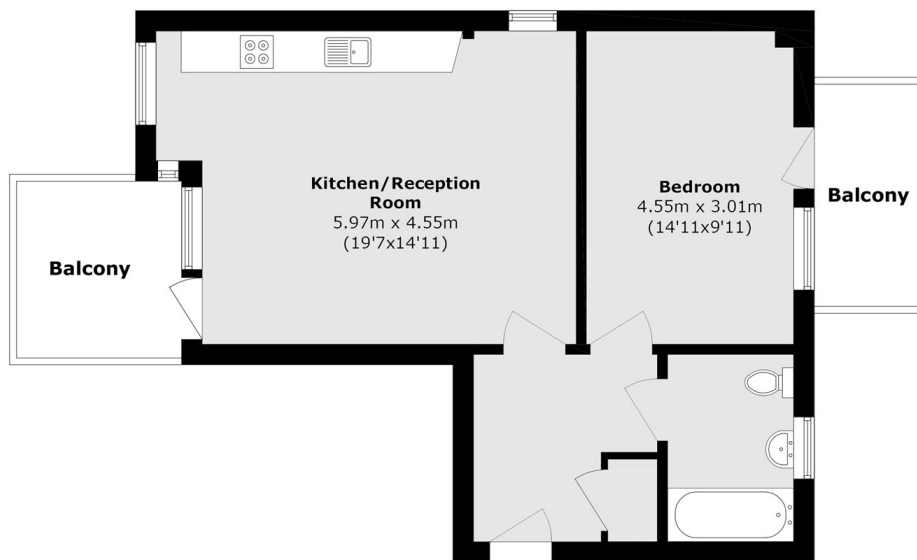
Situated on the third floor of this modern development, this beautifully presented one double bedroom apartment boasts a bright open-plan living and kitchen area, flooded with natural light throughout. The property further benefits from access to two private balconies, one of which offers attractive views over Streatham Common. Additional features include lift access, high-quality Bosch appliances, and a share of the freehold.

Lewin Road is ideally positioned between Streatham and Streatham Common stations, providing fast and convenient connections to London Bridge and London Victoria. A wide selection of bars, restaurants, and local amenities are also within easy reach of the property.

Features

- Two Private Balconies
- On Street Parking
- Large Double Bedroom
- Convenient Location
- Open Plan Living/Kitchen
- Modern Kitchen/Bathroom
- Bike Storage

Lewin Road,
LONDON, SW16



Total area (approx.): 53.7 sq. m (578.0 sq. ft)

Balcony area (approx.): 11.3 sq. m (121.6 sq. ft)